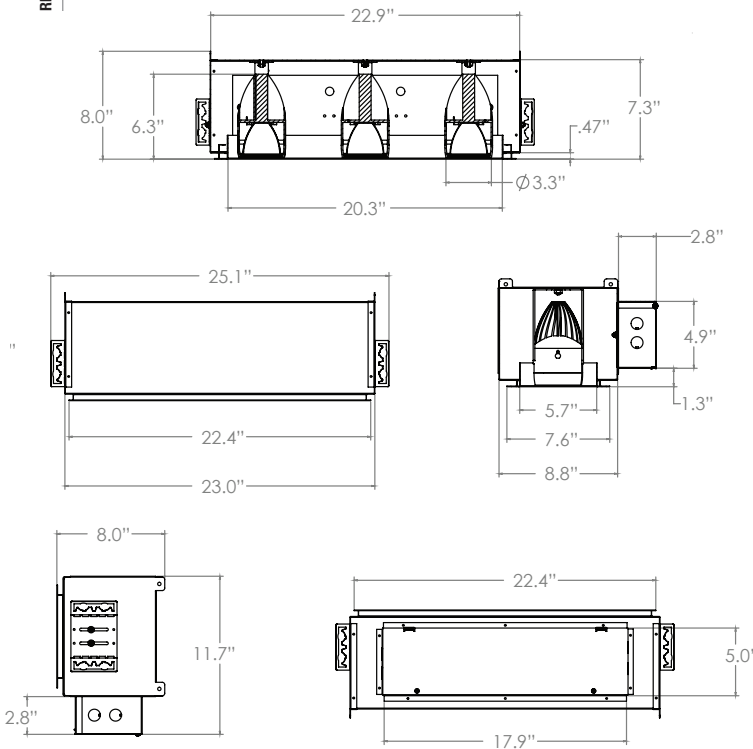




REFLECTOR/ FLANGED COLORS



NOMINAL LUMENS	WATTAGE
1200	17 W
900	13 W

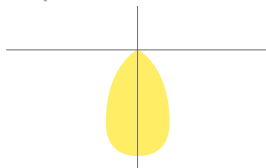
Based on 4000K, 90+ CRI. Actual wattage may vary +/- 5%

FEATURES

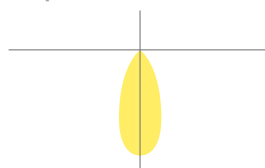
A recessed multiple combo light with unlimited features, available in 1, 2, 3 or 4 heads, with precise, glare-free illumination. Each individual luminaire has full aiming adjustability, allowing for 365-degree rotation and a 60-degree pivot that locks into place at any desired position. Each luminaire can be specifically designed to fit the appropriate application; combining different optics, lumen packages, technologies, or color temperatures in a single housing. With an array of color temperatures, it can accentuate the full spectrum of cool to warm tones, and is the ideal solution for retail merchandising, hospitality, supermarkets, commercial, or high-end residential.

LUMENS/HEAD	900, 1200
WARM DIM PLATFORMS	100% lumen output at 3000K, down to a 1% lumen output at 1800K
CRI	90+ Standard
COLOR QUALITY	2 Step MacAdam Ellipses
DISTRIBUTION PATTERNS	SP (Spot), NFL (Narrow Flood), FL (Flood)
TRIM OPTIONS	1,2,3,4 Trim, Trimless
REFLECTOR COLORS	BK(Black), WH(White)
FLANGE COLORS	BK(Black), WH(White), Custom RAL Colors.
DIMMING	0-10V Flicker Free 1% Dimming Standard (DIM10), LUTH LUT2W, DIMTR
EMERGENCY	10W - Bodine BSL310 20W - Bodine BSL20
LIFETIME	102,000 Hours
PHOTOMETRIC TESTS	In Accordance with IES LM79-08, LM80 and TM-30, TM-21

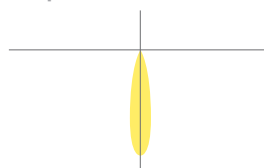
FL: FLOOD
Candlepower Distribution Curve



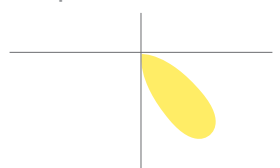
NFL: NARROW FLOOD
Candlepower Distribution Curve



SP: SPOT
Candlepower Distribution Curve



WALL WASH
Candlepower Distribution Curve



OPTICS AND REFLECTOR

A multi-segmented reflector allows for precise beam control, and offers field changeable optics in Narrow Spot, Narrow Flood, and Flood, with a variety of lumen options. With exceptional flexibility and controlled optics, each luminaire head can be positioned as a source for task, accent, or general illumination. Merchandising is consistently being rearranged, and the multiple combo is the perfect source for highlighting up to 4 different displays with a single housing. Trim options include trim or trimless, with black or white interior finish.

AIMING

The proprietary hot aiming system allows each individual head to be rotated 365 degrees horizontally and 45 degrees vertically, which can be locked into position without the use of tools.

HOUSING

Thermally protected for new construction, non-insulated ceilings or where insulation can be kept 3" from housing, with the ability to vertically adjust to accommodate various ceiling heights. It is fabricated from 18-gauge steel and post-painted, and each luminaire head is fabricated of die-cast aluminum to dissipate heat.

TRIM OPTION

Post-painted powder coated Die-Cast trim ring available in white and custom RAL colors. (Please consult factory for custom paint color options). Trim attaches to the housing with piano springs for snug fit and zero light leakage

TRIMLESS OPTION

Die-Cast perforated mesh cover intended for installation in drywall or plaster ceilings. Mudding may be applied right up to the edge of the luminaire opening to provide a seamless appearance. Trimless accessory is secured to the housing to prevent fractures in the ceiling and/or drywall during and after installation.

MOUNTING FRAME & BRACKET

Pre-installed butterfly brackets can be adjusted vertically with C-Channel mounting bars, allowing housing to be positioned and locked at any point within a 24" joist span. Bar hangers can fit onto a T-Bar spline with additional slots and holes for special mounting methods.

THERMAL MANAGEMENT SYSTEM

Passive cooling Die-cast Aluminum Heat Sink, LED light engine and driver are replaceable, upgradeable, and can be accessed from below the ceiling. The consistency in the quality of light is delivered with precision performance by the use of a unique locking mechanism that aligns the reflector with the light engine.

DRIVER ELECTRICAL INFORMATION

The LED driver is rated for 50 to 60Hz at 120V/277V input, produces less than 20%THD, and has a power factor between 90% and 100%, and is thermally protected for additional safety. Junction box and Driver can be accessed from below the ceiling and above the ceiling. Junction Box is Listed for through branch circuit wiring.

DIMMING & DRIVER INFORMATION

DIM10 - 0-10V dimming on either MVOLT 120, 277 or 347V. Dimmable down to 1% of initial lumens, standard.

DIMTR - Triac & Electronic low voltage dimming. Available in 120V, and up to 3000 lumens only.

LUT2W - Lutron LTEA2W Hi-Lume 1%. 2-wire LED Driver Forward Phase Control, 1% dimming in 120V only. Available on all fixtures up to 40 watts.

LUTH - Lutron LDE1 Hi-Lume Eco System. 1% dimming with Soft in Fade to Black dimming technology.

LUTFB - Lutron PEQ0 Hi-Lume Premier Eco System. 0.1% dimming with Soft in Fade to Black dimming technology. Available on all fixtures up to 20 watts.

ELDO10.1 - EldoLED SoloDrive 0-10V. Dimming down to 0.1%. Available on all fixtures up to 100 watts.

DALI - DALI DT6, DT8 dimming down to 1%. Available on all fixtures up to 100 watts.

ELDODMX - EldoLED PowerDrive dimming down to 0.1%. Available on all fixtures up to 100 watts.

Please see EldoLED website for wiring diagrams and a list of compatible DMX and Dali control systems.

WARRANTY

Five-year carefree warranty for parts and components. (Labor not included.)

LED DYNAMIC PLATFORM OPTIONS



SMART DIM - Dims to Warm with Smart Dim technology simulates traditional incandescent halogen lighting through dimming, while providing the energy efficiency, high performance and longevity of LED luminaires. When the luminaire dims to warm, it makes a smooth transition across the black body radiator curve. Starting with a 100% lumen output at 3000K, down to a 1% lumen output at 1800K, and maintaining a constant CRI of 90+. It results in rich amber tones as the light dims, encouraging relaxation. An ideal source for hospitality, residential, and assisted living applications.

LISTINGS

c-UL-us - Listed for Feed Through Wiring.

EXAMPLE: **FC3-LEDWDM-30K-18K-2000L-DIM10-FL-90-F-WH-BK**

SERIES	LUMEN	DIMMING	VOLTAGE	OPTICS	CRI	TRIM OPTION	TRIM COLOR	INTERIOR COLOR	ACCESSORIES
FC3-LED-WDM-30K-18K	<input type="checkbox"/> 900L <input type="checkbox"/> 1200L	<input type="checkbox"/> DIMTR <input type="checkbox"/> DIM10 <input type="checkbox"/> LUTH <input type="checkbox"/> LUT2W <input type="checkbox"/> ELDO10.1 <input type="checkbox"/> ELDODALI.1 <input type="checkbox"/> ELDODMX.1	<input type="checkbox"/> 120 <input type="checkbox"/> 277	<input type="checkbox"/> SP- Spot-15° <input type="checkbox"/> NFL- Narrow Flood-24°-25° <input type="checkbox"/> FL- Flood-36°-38°	<input type="checkbox"/> 90+	<input type="checkbox"/> F (Flanged) <input type="checkbox"/> TL (Trimless)	<input type="checkbox"/> WH (White) <input type="checkbox"/> BK (Black)	<input type="checkbox"/> WH (White) <input type="checkbox"/> BK (Black)	<input type="checkbox"/> BP31- 24" C-channel bar hangers