

DRIVERS

POWER SUPPLY WITH PLUG-IN (non-dimmable)

Approximate Sizes and Weight

PART#	Input(120V)	Output(24V)	Depth	Height	Width
EUM-LED-DRIVER-30W-24V	1@30 Watts	24V	1-3/4"	3-1/3"	2-1/4"
EUM-LED-DRIVER-65W-24V	1@65 Watts	24V	1-1/2"	4-3/4"	2-1/4"
EUM-LED-DRIVER-100W-24V	1@100 Watts	24V	1-1/2"	1-1/2"	1-1/2"
EUM-LED-DRIVER-96W-24V	1@96 Watts	24V	1-1/8"	1-5/8"	9-1/2"

MAGNETIC & ELECTRONIC DRIVERS



DIMMABLE COMPACT LED DC 120V MAGNETIC DRIVERS

Approximate Sizes and Weight (FOR USE WITH STANDARD OR MAGNETIC LOW VOLTAGE DIMMER)

PART#	Input(120V)	Output(24V)	Depth	Height	Width
EUM-DC-24-40-120	1@40 Watts	24V	2-1/4"	5"	2"
EUM-DC-24-60-120	1@60 Watts	24V	2-1/2"	6"	2-1/4"
EUM-DC-24-100-120	1@100 Watts	24V	2-1/2"	6"	2-1/4"
EUM-DC-24-150-120	1@150 Watts	24V	3"	9.8"	3"
EUM-DC-24-200-120	1@200 Watts	24V	3"	9.8"	3"

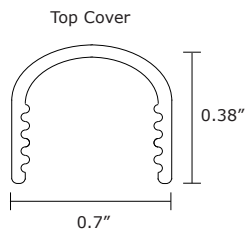
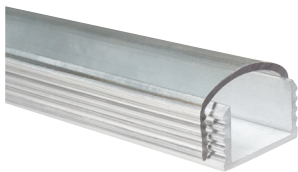


DIMMABLE COMPACT LED DC 227V MAGNETIC DRIVERS

Approximate Sizes and Weight (FOR USE WITH STANDARD OR MAGNETIC LOW VOLTAGE DIMMER)

PART#	Input(277V)	Output(24V)	Depth	Height	Width
EUM-DC-24-40-277	1@40 Watts	24V	2-1/4"	5"	2"
EUM-DC-24-60-277	1@60 Watts	24V	2-1/2"	5"	2"
EUM-DC-24-100-277	1@100 Watts	24V	2-1/2"	6"	2-1/4"

Mini Channel Mounting System



Features

Easy to snap together top and bottom design

Dimensions

Length: 48"
Height: 1/2"
Width: 3/4"

Finish

LB100-TC-CL (Clear- Top Cover)
LB100-TC-CLF (Clear Frosted- Top Cover)
LB100-TC-WH (White- Top Cover)
LB100-TC-WF (White Frosted- Top Cover)
LB100-TC-AMBER (Amber- Top Cover)
LB100-TC-RED (Red- Top Cover)
LB100-TC-GREEN (Green- Top Cover)
LB100-TC-BLUE (Blue- Top Cover)

