

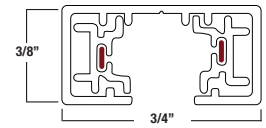
## MINI-CIRCUIT TRACK

- 10 Gauge Copper Conductors
- 3/8" Height x 3/4" Width
- End Cap, live end connector and mounting hardware supplied with track
- Rated 25mps, 300W Max. for 12V runs and 600W Max. for 24 V runs

**ETS2** 2FT. Low Voltage Mini Track  
**ETS4** 4FT. Low Voltage Mini Track  
**ETS8** 8FT. Low Voltage Mini Track

Color:  
☐ White ☒ Black

### DIMENSIONS



### ELA-150-24-AC

**DESCRIPTION:** This quiet 150W-24V electronic step-down transformer is designed to be used with low voltage lighting systems and is protected against overload, has a 2 year guarantee. This transformer is offered with three 1/2" KO's and is designed for branch circuit and remote applications.



### LET-60

**DESCRIPTION:** This quiet 60W-12V electronic step-down transformer is designed to be used with low voltage lighting systems and is protected against overload, short circuit and over heat and has a 2 year guarantee.



### ELA-300

**DESCRIPTION:** This quiet 300W-12V electronic step-down transformer is designed to be used with low voltage lighting systems and is protected against overload, short circuit and over heat and has a 2 year guarantee. This transformer is offered with three 1/2" KO's and is designed for branch circuit and remote applications.



### LVT-60

**DESCRIPTION:** This quiet 60W-12V electronic step-down transformer is designed to be used with low voltage lighting systems and is protected against overload, short circuit and over heat and has a 2 year guarantee.



**Floating Canopy**

**ETS5103-\_\_**

**Color**

☐ White ☐ Black

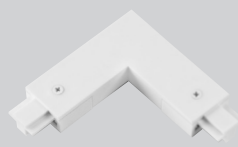


**Pendant Adapter**

**ETS5122-\_\_**

**Color**

☐ White ☐ Black



**L Connector w/ Power Entry**

**ETS5108-\_\_**

**Color**

☐ White ☐ Black

**Must Order with ELA-75**  
 \*Transformer not included



**Live End for 75W Transformer**

**ETS5127-\_\_**

**Color**

☐ White ☐ Black



**Mono Point 12V 50W Max**

**ETS5140-\_\_**

**Color**

☐ White ☐ Black



**Live End Connector**

**ETS5101-\_\_**

**Color**

☐ White ☐ Black

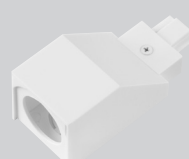


**Mini Coupling**

**ETS5107-\_\_**

**Color**

☐ White ☐ Black



**Conduit Feeder**

**ETS5126-\_\_**

**Color**

☐ White ☐ Black



**Live End with Cover**

**ETS5138-\_\_**

**Color**

☐ White ☐ Black



**Straight Conn. w/ Power Entry**

**ETS5136-\_\_**

**Color**

☐ White ☐ Black