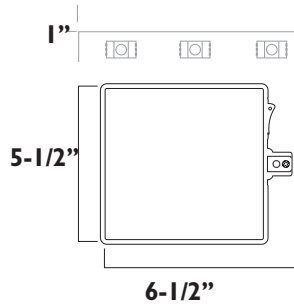
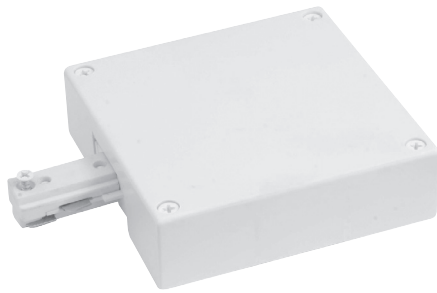


# TRACK-CIRCUIT LIMITER

## Features and Benefits

- Center & End Feed capable.
- Seven breaker sizes are available.
- Can be utilized on hard or grid ceilings.
- Can be used with pendant suspended track.
- Breaker can be used as an on-off switch.
- Meets California Title 24 requirements.
- cULus Listed.



## Finish:



## Single Circuit Track Limiter

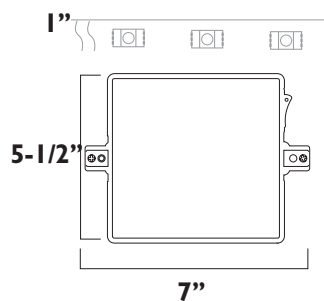
live-end feed with circuit breaker

ET158-1A-__	(120W) Circuit Breaker
ET158-2.5A-__	(300W) Circuit Breaker
ET158-5A-__	(600W) Circuit Breaker
ET158-7.5A-__	(960W) Circuit Breaker
ET158-10A-__	(1200W) Circuit Breaker
ET158-12A-__	(1440W) Circuit Breaker
ET158-14A-__	(1660W) Circuit Breaker

## 2- Circuit Track Limiter

live-end feed with circuit breaker

ET2158-1A-__	(120W) Circuit Breaker
ET2158-2.5A-__	(300W) Circuit Breaker
ET2158-5A-__	(600W) Circuit Breaker
ET2158-7.5A-__	(960W) Circuit Breaker
ET2158-10A-__	(1200W) Circuit Breaker
ET2158-12A-__	(1440W) Circuit Breaker
ET2158-14A-__	(1660W) Circuit Breaker



## Single Circuit Track Coupler Limiter

In-line feed with circuit breaker

ET159-1A-__	(120W)-Circuit Breaker
ET159-2.5A-__	(300W)-Circuit Breaker
ET159-5A-__	(600W)-Circuit Breaker
ET159-7.5A-__	(960W) Circuit Breaker
ET159-10A-__	(1200W) Circuit Breaker
ET159-12A-__	(1440W) Circuit Breaker
ET159-14A-__	(1660W) Circuit Breaker

## 2- Circuit Track Coupler Limiter

In-line feed with circuit breaker

ET2159-1A-__	(120W)-Circuit Breaker
ET2159-2.5A-__	(300W)-Circuit Breaker
ET2159-5A-__	(600W)-Circuit Breaker
ET2159-7.5A-__	(960W) Circuit Breaker
ET2159-10A-__	(1200W) Circuit Breaker
ET2159-12A-__	(1440W) Circuit Breaker
ET2159-14A-__	(1660W) Circuit Breaker