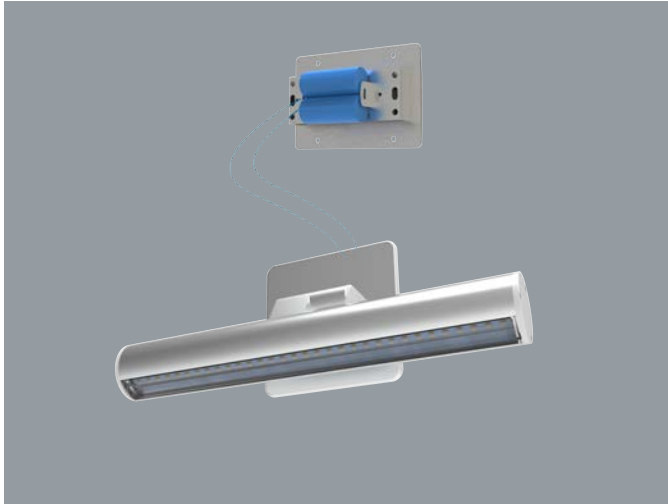


# ELM-LED-893-AC/DC

www.luseElite.com

## AC/DC Outdoor Emergency Light +Remote Emergency Power Supply



Crafted to deliver light in situations of power loss or emergencies within outdoor environments. Outfitted with both AC (Alternating Current) and DC (Direct Current) power supply options, ensuring uninterrupted functionality even when the primary power source falters. AC/DC outdoor emergency luminaires harness power from both the conventional electrical grid (AC power) and an internal battery (DC power). This dual-power arrangement guarantees continual radiance during power interruptions. The remote emergency power supply offers the flexibility of strategic positioning. Placing the secondary power source at a distance from the fixture presents logistical and operational benefits. The lamp head can be flexibly positioned and secured at any angle within the range of 0-180°. The LED, coupled with a specialized lens, delivers illumination above doors with a complete cut-off dispersion.

### BODY

- Aluminum extrusion with UV resistant white powder coating

### MOUNTING

- Surface for WALL and TOP mount
- The lamp head can be fixed within the range of 0-180°

### ELECTRICAL

- AC mode normal supply: 120-277V AC 60Hz
- DC backup mode supply: 6-24V DC
- Max 8W power consumption

### OPERATION

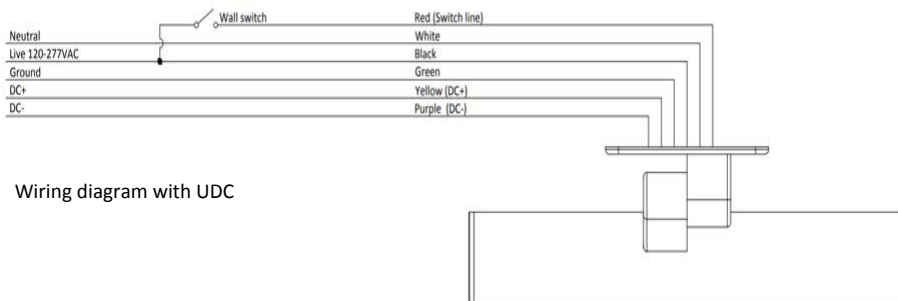
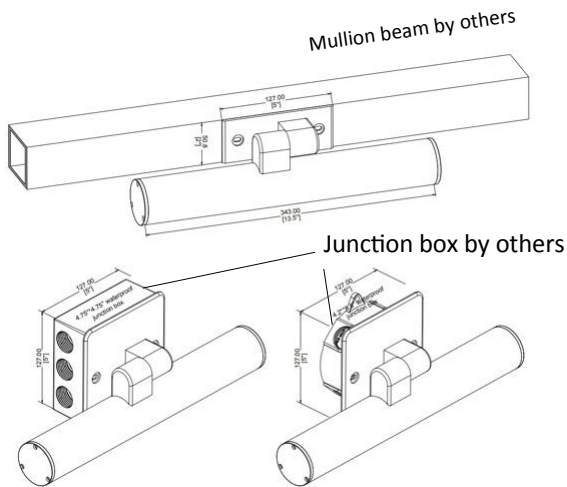
- AC only mode. (wall switch with AC general lighting )
- DC only mode (DC 6-24V input)
- AC/DC mode (Both general lighting and extra DC 6-24V backup)

### ILLUMINATION

- CRI 80
- CCT 5000K
- 5SDCM
- AC Mode: 1000 lumens
- DC mode: 800 lumens

### COMPLIANCE

- Suitable for use in -22°F-122°F
- Suitable for Wet Location
- IP66
- IK10
- UL/CUL listed

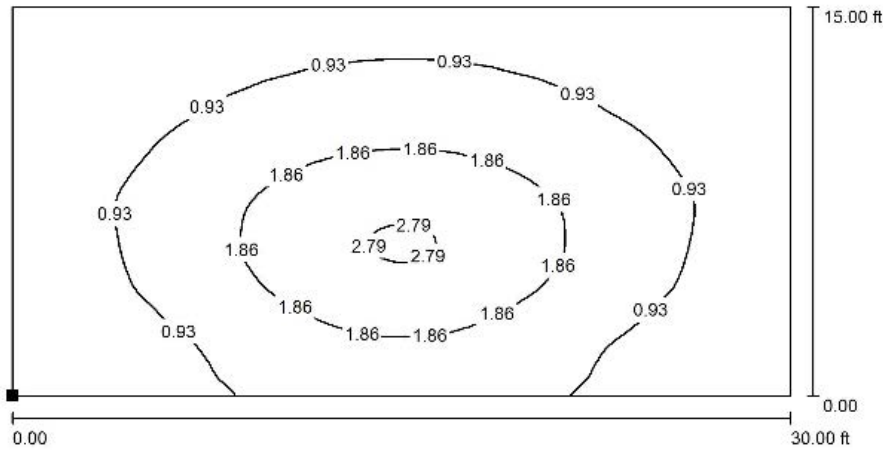
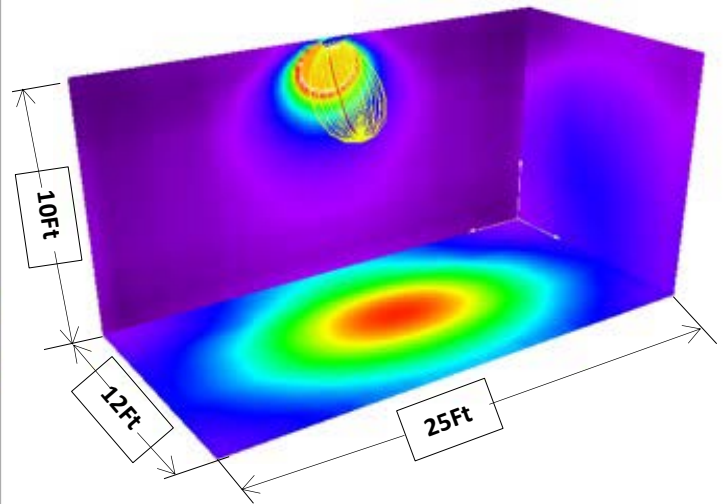
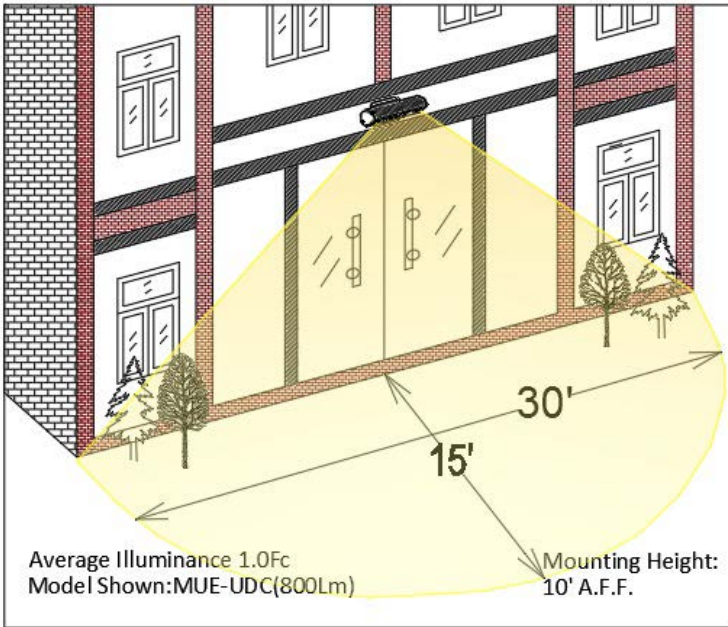


Wiring diagram with UDC

### AVAILABLE FINISH COLORS



# SINGLE UNIT FOR DOOR FORWARD PERFORMANCE



Position of surface in room:  
Marked point: (0.000 ft, 0.000 ft, 0.000 ft)



Grid: 128 x 64 Points

$E_{av}$  [fc]  
1.16

$E_{min}$  [fc]  
0.40

$E_{max}$  [fc]  
2.85

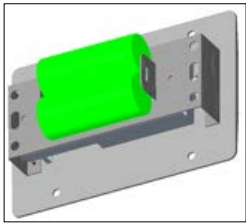
$u0$   
0.345

$E_{min} / E_{max}$   
0.141

# ELM-LED-893-AC/DC

[www.luseElite.com](http://www.luseElite.com)

## AC/DC Outdoor Emergency Light +Remote Emergency Power Supply



### FEATURES

Remote battery backup system. Appropriate for indoor applications in areas with moisture. Utilizes a solid-state charger with voltage limitations. Includes safeguards to protect against overload and short circuits. Incorporates a test switch and an indicator light to show power status. Can be easily mounted directly onto a standard 3-gang masonry box.

### MOUNTING

- Surface for WALL and TOP mount

### ELECTRICAL

- AC mode normal supply: 120-277V AC 60Hz
- DC output: 6 VDC Max 1.5A
- Max 4W power consumption

### OPERATION

- Manual test

### MOUNTING

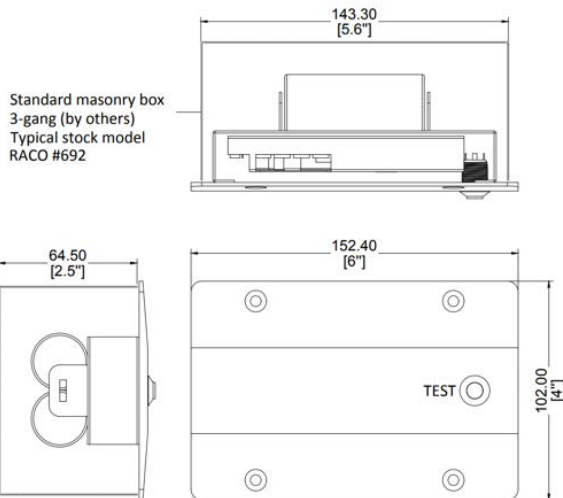
- Mount to standard 3-gang masonry box

### COMPLIANCE

- Suitable for Damp Location

**DAMP  
LOCATION**

**5 YEARS  
LIMITED  
WARRANTY**



# WIRING DIAGRAM

