

# CH6PL

## 6" Architectural Horizontal CFL Downlight

Architectural

Catalog Number:

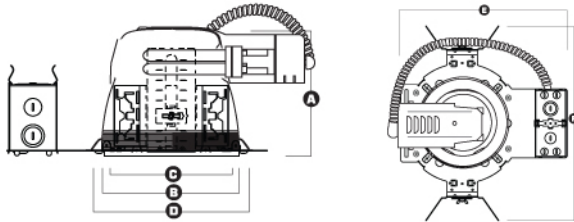
Project Name:

Type:

Note:

**MAXILUME**  
ARCHITECTURAL LIGHTING

**NEW**



### DESCRIPTION

**1. LAMP HOLDER** - Aluminum lamp holder effectively provides heat dissipation and ventilation. Unitized optics guarantees proper trim to housing installation. Tool-less installation adjustability from either outside the housing or inside the housing.

**2. MOUNTING BRACKET** - Constructed from 16-gauge steel. Can be installed with 3/4" or 1-1/2" lathing channel, 1/2" EMT, or with optional C-channel mounting bars (Part# BP31) ordered separately. Housing can be adjusted from the inside of the ceiling.

**3. RETAINING SPRINGS** - Precision tooled springs secure trim to mounting frame, for effortless and tool-less installation.

**4. JUNCTION BOX/BALLAST** - UL listed for through-branch circuit wiring and has four 1/2" KO's, one 3/4" KO and four Romex knockouts with pry-out slots and strain clamps. Ballast and Junction Box are accessible from below, no tools required. Ballast supplied is manufactured by Philips Advance, Universal Technologies or Lutron Electronics.

**5. MOUNTING FRAME** - Die-formed construction for maximum heat dissipation and rust protection.

### OPTICS

**6. REFLECTOR** - Self-flanged .050" aluminum reflector with low iridescent finish. Reflector provides 45-degree lamp-to-reflector image cutoff.

**7. GROOVE BAFFLE** - Self-flanged one-piece aluminum with concentric rings.

**8. LENS** - Choice of either tempered clear, tempered prismatic or tempered frosted lens fastened with two torsion springs for easy re-lamping. UL listed for wet or damp location.

### LISTING

UL listed for through-branch circuit wiring and damp locations. Wet location only with lens trims.

- A. Min. Height = 5-3/8"
- Max. Height = 5-1/2"
- B. Trim Aperture = 6-1/8"
- C. Cut-out = 6-3/4"
- D. Trim Outside Diameter = 7-3/8"
- E. Width = 12-7/8"
- F. Length = 16-1/8"



LAMP BASE GUIDE (Sockets will accept all designated lamp bases listed.)						
13W	18W	26W	32W	42W	57W	70W
G24q-1 GX24q-1	G24q-2 GX24q-2	<b>G24q-3</b> <b>GX24q-3</b> GX24q-4	<b>GX24q-3</b> GX24q-4	GX24q-4	GX24q-5	GX24q-6

CH6PL - ITEM SELECTOR: (Please check the boxes below for the option desired)

WATTAGE	BALLAST	VOLTAGE	EMERGENCY OPTIONS	TRIM TYPE & DESCRIPTION	REFLECTOR	BAFFLE	GLASS
<b>1 LAMP</b> <input type="checkbox"/> 1X9 <input type="checkbox"/> 1X13 <input type="checkbox"/> 1X18 <input type="checkbox"/> 1X26 <input type="checkbox"/> 1X32 <input type="checkbox"/> 1X42  <b>2 LAMPS</b> <input type="checkbox"/> 2X9 <input type="checkbox"/> 2X13 <input type="checkbox"/> 2X18 <input type="checkbox"/> 2X26	<input type="checkbox"/> (E) Electronic <input type="checkbox"/> (M) Magnetic <sup>1</sup> <input type="checkbox"/> (S) Energy Star <sup>2</sup> <input type="checkbox"/> (DBL) Dual Ballast  <b>DIMMING</b> <input type="checkbox"/> Mark 7 <sup>3</sup> <input type="checkbox"/> Mark 10 <sup>4</sup> <input type="checkbox"/> Lut-E (EC3D) <sup>5</sup>	<input type="checkbox"/> MVOLT (120/277) <input type="checkbox"/> 120 <input type="checkbox"/> 277 <input type="checkbox"/> 347	<input type="checkbox"/> EMG 750 (750 Lumens) <sup>6</sup> <input type="checkbox"/> EMG 1300 (1300 Lumens) <sup>6</sup> <input type="checkbox"/> INTG 750 (750 Lumens) <sup>7</sup> <input type="checkbox"/> INTG 1300 (1300 Lumens) <sup>7</sup> <input type="checkbox"/> EMG-D-750 (750 Lumens) <sup>8</sup> <input type="checkbox"/> INTG-D-750 (750 Lumens) <sup>9</sup> <input type="checkbox"/> ICE-1300 (1300 Lumens) <sup>10</sup>  <b>OTHER OPTIONS</b> <input type="checkbox"/> FUSE <sup>11</sup> <input type="checkbox"/> RIF <sup>12</sup> <input type="checkbox"/> BP31 (24" C-Channel Bar Hangers)	<input type="checkbox"/> 6501 <input type="checkbox"/> 6516 <input type="checkbox"/> 6526 <input type="checkbox"/> 6502 <input type="checkbox"/> 6517 <input type="checkbox"/> 6527 <input type="checkbox"/> 6503 <input type="checkbox"/> 6518 <input type="checkbox"/> 6504 <input type="checkbox"/> 6519 <input type="checkbox"/> 6505 <input type="checkbox"/> 6509 <input type="checkbox"/> 6506 <input type="checkbox"/> 6510 <input type="checkbox"/> 6507 <input type="checkbox"/> 6511 <input type="checkbox"/> 6508 <input type="checkbox"/> 6521 <input type="checkbox"/> 6512 <input type="checkbox"/> 6522 <input type="checkbox"/> 6513 <input type="checkbox"/> 6523 <input type="checkbox"/> 6514 <input type="checkbox"/> 6524 <input type="checkbox"/> 6515 <input type="checkbox"/> 6525	<input type="checkbox"/> CL <input type="checkbox"/> SCH <sup>**</sup> <input type="checkbox"/> SHZ <sup>**</sup> <input type="checkbox"/> WT <input type="checkbox"/> W <input type="checkbox"/> MB	<input type="checkbox"/> WH <input type="checkbox"/> P	<input type="checkbox"/> Blue <input type="checkbox"/> Green <input type="checkbox"/> Red <input type="checkbox"/> Frost

<sup>1</sup> - (M) Magnetic = Available on 9W, 13W, 18W & 26W fixtures only • <sup>2</sup> - (S) Energy Star = Available on selected fixtures only, please see list above • <sup>3</sup> - MARK 7 = Must specify voltage • <sup>4</sup> - MARK 10 = Not available on 13W, 57W, 70W, must specify voltage • <sup>5</sup> - LUT-E (EC3D) = Not available on 13W, 57W, 70W, must specify voltage • <sup>6</sup> - EMG = Emergency battery pack w/ remote test switch • <sup>7</sup> - INTG = Emergency battery pack w/ integral (reflector) test switch • <sup>8</sup> - EMG-D = Emergency battery pack w/ remote test switch for damp location • <sup>9</sup> - INTG-D = Emergency battery pack w/ integral(reflector) test switch for damp location • <sup>10</sup> - ICE = Emergency battery pack w/ remote test switch operating between -18°C and 55°C • <sup>11</sup> - FUSE = Single slow-blow fuse • <sup>12</sup> - RIF = Radio interference filter

### Specifications:

CH6PL

WATT	BALLAST	VOLTAGE	EMERGENCY	OPTIONS	TRIM TYPE	REFLEC.	BAFFLE	RING	GLASS
------	---------	---------	-----------	---------	-----------	---------	--------	------	-------

Sample of Catalog Number: CH6PL-1X32-E-MVOLT-EMG750-6501-CL-WH

<b>REFLECTOR</b>	<b>BAFFLE</b>	<b>RING</b>
CL Clear	WH White	WH Self-Flange White
SHZ Satin Haze (Low Iridescent)	P Black	Standard on all trims
WT Wheat	<b>GLASS</b>	SCH** Self-Flange Chrome
MB Black	Only available on XX09, XX10 and XX11 series.	** Only available on XX01 CL
W White		SHZ* Satin Haze
		* Provided w/ satin haze ring only

\*For custom baffle, reflector, trim ring, glass color and lens options, please consult factory.



A division of  
**Elite Lighting**

Submittal form is available @ [www.maxilume.com](http://www.maxilume.com)  
Tel: 323-888-1973 • Fax: 323-888-1977

Specifications and Dimensions subject to change without notice.

# 6" Horizontal CFL Optics

Catalog Number:

Project Name:

Type:

Note:

**MAXILUME**  
ARCHITECTURAL LIGHTING

<p><b>6501-CL Reflector</b></p>  <p><b>REFLECTOR FINISH:</b> CL, WT, MB, SHZ, W</p> <p><b>RING FINISH:</b> WH, SCH, SHZ</p> <p>A= 5-1/2" • B= 7-3/8"</p>	<p><b>6502-WH-CL Baffle with Reflector</b></p>  <p><b>BAFFLE FINISH:</b> WH, P</p> <p><b>REFLECTOR FINISH:</b> CL</p> <p>A= 5-1/2" • B= 7-3/8" • C= 1"</p>	<p><b>6507-SHZ Wall Wash Reflector</b></p>  <p><b>REFLECTOR FINISH:</b> CL, WT, MB, SHZ, W</p> <p><b>RING FINISH:</b> WH, SCH, SHZ</p> <p>A= 5-1/2" • B= 7-3/8"</p>	<p><b>6508-CL Crossblade Reflector</b></p>  <p><b>REFLECTOR FINISH:</b> CL, WT, MB, SHZ</p> <p><b>RING FINISH:</b> WH</p> <p>A= 5-1/2" • B= 7-3/8"</p>
<p><b>6503-CL Reflector with Fresnel Glass Lens</b></p>  <p><b>FOR WET LOCATION</b></p> <p><b>REFLECTOR FINISH:</b> CL, WT, MB, SHZ, W</p> <p><b>RING FINISH:</b> WH</p> <p>A= 5-1/2" • B= 7-3/8" • C= 1"</p>	<p><b>6504-CL Reflector with Prismatic Glass Lens</b></p>  <p><b>FOR WET LOCATION</b></p> <p><b>REFLECTOR FINISH:</b> CL, WT, MB, SHZ, W</p> <p><b>RING FINISH:</b> WH</p> <p>A= 5-1/2" • B= 7-3/8" • C= 1"</p>	<p><b>6505-P Baffle with Fresnel Glass Lens</b></p>  <p><b>FOR WET LOCATION</b></p> <p><b>BAFFLE FINISH:</b> WH, P</p> <p><b>RING FINISH:</b> WH</p> <p>A= 5-1/2" • B= 7-3/8" • C= 1"</p>	<p><b>6506-WH Baffle with Prismatic Glass Lens</b></p>  <p><b>FOR WET LOCATION</b></p> <p><b>BAFFLE FINISH:</b> WH, P</p> <p><b>RING FINISH:</b> WH</p> <p>A= 5-1/2" • B= 7-3/8" • C= 1"</p>
<p><b>6514-CL Reflector with Frosted Glass Lens</b></p>  <p><b>FOR WET LOCATION</b></p> <p><b>REFLECTOR FINISH:</b> CL, WT, MB, SHZ, W</p> <p><b>RING FINISH:</b> WH, SCH, SHZ</p> <p>A= 5-1/2" • B= 7-3/8" • C= 1"</p>	<p><b>6515-WT Reflector with Tempered Clear Glass</b></p>  <p><b>FOR WET LOCATION</b></p> <p><b>REFLECTOR FINISH:</b> CL, WT, MB, SHZ, W</p> <p><b>RING FINISH:</b> WH, SCH, SHZ</p> <p>A= 5-1/2" • B= 7-3/8" • C= 1"</p>	<p><b>6512-WH Baffle with Frosted Glass Lens</b></p>  <p><b>FOR WET LOCATION</b></p> <p><b>BAFFLE FINISH:</b> WH, P</p> <p><b>RING FINISH:</b> WH</p> <p>A= 5-1/2" • B= 7-3/8" • C= 1"</p>	<p><b>6513-WH Baffle with Tempered Clear Glass</b></p>  <p><b>FOR WET LOCATION</b></p> <p><b>BAFFLE FINISH:</b> WH, P</p> <p><b>RING FINISH:</b> WH</p> <p>A= 5-1/2" • B= 7-3/8" • C= 1"</p>
<p><b>6516-CL Reflector with Prismatic Plastic Lens</b></p>  <p><b>FOR WET LOCATION</b></p> <p><b>REFLECTOR FINISH:</b> CL, WT, MB, SHZ, W</p> <p><b>RING FINISH:</b> WH</p> <p>A= 5-1/2" • B= 7-3/8" • C= 1"</p>	<p><b>6518-WT Reflector with Tempered Clear Plastic</b></p>  <p><b>FOR WET LOCATION</b></p> <p><b>REFLECTOR FINISH:</b> CL, WT, MB, SHZ, W</p> <p><b>RING FINISH:</b> WH</p> <p>A= 5-1/2" • B= 7-3/8" • C= 1"</p>	<p><b>6517-WH Baffle with Prismatic Plastic Lens</b></p>  <p><b>FOR WET LOCATION</b></p> <p><b>BAFFLE FINISH:</b> WH, P</p> <p><b>RING FINISH:</b> WH</p> <p>A= 5-1/2" • B= 7-3/8" • C= 1"</p>	<p><b>6519-WH Baffle with Tempered Clear Plastic</b></p>  <p><b>FOR WET LOCATION</b></p> <p><b>BAFFLE FINISH:</b> WH, P</p> <p><b>RING FINISH:</b> WH</p> <p>A= 5-1/2" • B= 7-3/8" • C= 1"</p>

# 6" Horizontal CFL Optics

Catalog Number:

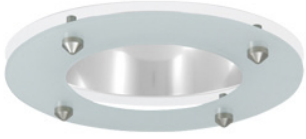
Project Name:

Type:

Note:

**MAXILUME**  
ARCHITECTURAL LIGHTING

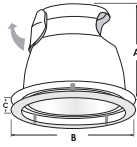
**6509-CL**  
Deco Glass Reflector



**REFLECTOR FINISH:**  
CL, WT, MB, SHZ, W

**RING FINISH:**  
WH, SCH, SHZ

**GLASS FINISH:**  
BLUE, GREEN, RED, FROST



A= 5-1/2" • B= 7-3/8" • C= 1-1/4"

**6510-CL**  
Double Ring Glass



**REFLECTOR FINISH:**  
CL, WT, MB, SHZ, W

**RING FINISH:**  
WH, SCH, SHZ

**GLASS FINISH:**  
BLUE, GREEN, RED, FROST



A= 5-1/2" • B= 7-3/8" • C= 1-3/4"

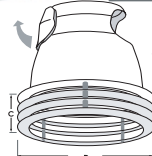
**6511-CL**  
Triple Ring Glass



**REFLECTOR FINISH:**  
CL, WT, MB, SHZ, W

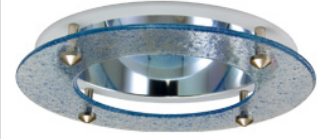
**RING FINISH:**  
WH, SCH, SHZ

**GLASS FINISH:**  
BLUE, GREEN, RED, FROST



A= 5-1/2" • B= 7-3/8" • C= 2-1/4"

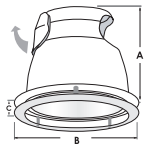
**6521-CL**  
Stardust Deco Ring Glass



**REFLECTOR FINISH:**  
CL, WT, MB, SHZ, W

**RING FINISH:**  
WH, SCH, SHZ

A= 5-1/2" • B= 7-3/8" • C= 1-1/4"



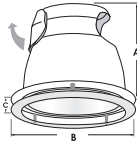
**6522-CL**  
Euro Deco Ring Glass



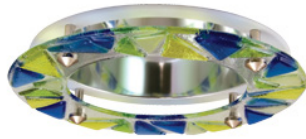
**REFLECTOR FINISH:**  
CL, WT, MB, SHZ, W

**RING FINISH:**  
WH, SCH, SHZ

A= 5-1/2" • B= 7-3/8" • C= 1-1/4"



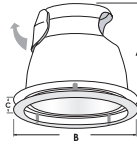
**6523-CL**  
Prism Deco Ring Glass



**REFLECTOR FINISH:**  
CL, WT, MB, SHZ, W

**RING FINISH:**  
WH, SCH, SHZ

A= 5-1/2" • B= 7-3/8" • C= 1-1/4"



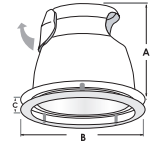
**6524-CL**  
Geo Deco Ring Glass



**REFLECTOR FINISH:**  
CL, WT, MB, SHZ, W

**RING FINISH:**  
WH, SCH, SHZ

A= 5-1/2" • B= 7-3/8" • C= 1-1/4"



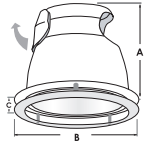
**6525-CL**  
Central Etched Float Glass



**REFLECTOR FINISH:**  
CL, WT, MB, SHZ, W

**RING FINISH:**  
WH, SCH, SHZ

A= 5-1/2" • B= 7-3/8" • C= 1-1/4"



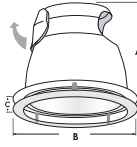
**6526-CL**  
Diffusing Screen Wall Wash



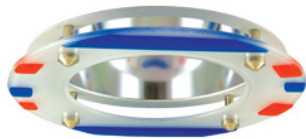
**REFLECTOR FINISH:**  
CL, WT, MB, SHZ, W

**RING FINISH:**  
WH, SCH, SHZ

A= 5-1/2" • B= 7-3/8" • C= 1-1/4"



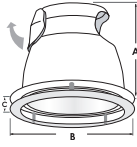
**6527-CL**  
Geo Deco Ring Glass



**REFLECTOR FINISH:**  
CL, WT, MB, SHZ, W

**RING FINISH:**  
WH, SCH, SHZ

A= 5-1/2" • B= 7-3/8" • C= 1-1/4"



<b>REFLECTOR</b>	<b>BAFFLE</b>	<b>RING</b>
<b>CL</b> Clear	<b>WH</b> White	<b>WH</b> Self-Flange White
<b>SHZ</b> Satin Haze (Low Iridescent)	<b>P</b> Black	Standard on all trims
<b>WT</b> Wheat	<b>GLASS</b>	<b>SCH**</b> Self-Flange Chrome
<b>MB</b> Black	Only available on <b>XX09, XX10</b> and <b>XX11</b> series.	** Only available on <b>XX01</b> CL
<b>W</b> White		<b>SHZ*</b> Satin Haze
		* Provided w/ satin haze ring only

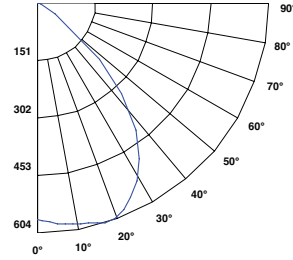
\*For custom baffle, reflector, trim ring, glass color and lens options, please consult factory.

# PHOTOMETRIC DATA | CFL | 6" HORIZONTAL DOWNLIGHT



HH6PL-1X26-E-6501-CL / BHHR6PL-1X26-E-6501-CL / HHR6PL-1X26-E-6501-CL / HHJ6PL-1X26-E-6501-CL / CH6PL-1X26-E-6501-CL TEST NO.: LLI 0509-15P-P  
 LAMP: GE F26TBX/841/A/ECO LUMENS: 1710 TOTAL LUMINAIRE EFFICIENCY: 62.2% SPACING CRITERIA: 1.26

## Candle Power Distribution (Candelas)



## Zonal Lumens Summary

Zone	Lumens	%Lamp	%Fixt
0-30°	458.19	26.8	43.1
0-40°	702.88	41.1	66
0-60°	1026.99	60.1	96.5
0-90°	1064.31	62.2	100
90-120°	0	0	0
90-130°	0	0	0
90-150°	0	0	0
90-180°	0	0	0
0-180°	1064.31	62.2	100

Total Luminaire Efficiency = 62.2%

## Luminance Data (cd/sq.m)

Angle In Degrees	Average 0°	Average 45°	Average 90°
45°	20212	20212	20212
55°	4956	4956	4956
65°	872	872	872
75°	610	610	610
85°	1208	1208	1208

## Zonal Lumen Summary

Zone	Lumens
0-10	45.13
10-20	169.26
20-30	243.79
30-40	244.69
40-50	236.3
50-60	87.81
60-70	28.93
70-80	5.15
80-90	3.24

## Candela Tabulation

Zone	Lumens	Candela
0	0	570
1	570	577
3	577	582
5	582	586
7	586	589
9	589	591
11	591	594
13	594	599
15	599	604
17	604	602
19.5	602	587
22.5	587	565
25.5	565	535
29	535	487
33	487	421
37.5	421	323
42.5	323	220
47.5	220	54
55	54	7
65	7	3
75	3	2
85	2	0
90	0	0

## Beam Angle: 109°

Distance to Plane	Initial Nadir Footcandles	Beam Spread
4'	35.6	11.3'
6'	15.8	17.0'
8'	8.9	22.6'
10'	5.7	28.3'
12'	4	34.0'

BEAM DIA. MEASURED AT 10% OF NADIR F.C.

## Coefficients of Utilization - Zonal Cavity Method

Effective Floor Cavity Reflectance 20% = PF

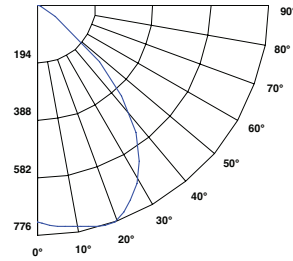
ROOM CAVITY RATIO	RC	80%				70%				50%				30%				10%				0%			
		RW	70%	50%	30%	10%	70%	50%	30%	10%	50%	30%	10%	50%	30%	10%	50%	30%	10%	0%	50%	30%	10%	0%	
0	74	74	74	74	72	72	72	72	69	69	69	66	66	66	64	64	64	62	62	62	62	62	62	62	62
1	70	67	66	64	68	66	64	63	64	62	61	61	60	59	59	58	57	56	56	56	56	56	56	56	56
2	65	61	58	55	63	60	57	55	58	55	53	56	54	52	54	53	51	50	50	50	50	50	50	50	50
3	60	55	51	48	59	54	51	48	53	50	47	51	49	46	50	47	46	44	44	44	44	44	44	44	44
4	56	50	46	43	55	50	45	42	48	45	42	47	44	41	46	43	41	40	40	40	40	40	40	40	40
5	52	46	41	38	51	45	41	38	44	40	37	43	40	37	42	39	37	35	35	35	35	35	35	35	35
6	49	42	37	34	48	41	37	34	40	36	33	39	36	33	38	35	33	32	32	32	32	32	32	32	32
7	46	39	34	31	45	38	34	30	37	33	30	36	33	30	35	32	30	29	29	29	29	29	29	29	29
8	43	35	31	28	42	35	31	28	34	30	27	34	30	27	33	30	27	26	26	26	26	26	26	26	26
9	40	33	28	25	39	32	28	25	32	28	25	31	27	25	31	27	25	24	24	24	24	24	24	24	24
10	38	30	26	23	37	30	26	23	29	26	23	29	25	23	28	25	23	22	22	22	22	22	22	22	22

RC - Ceiling Cavity Reflectance

RW - Wall Reflectance

HH6PL-1X32-E-6501-CL / BHHR6PL-1X32-E-6501-CL / HHR6PL-1X32-E-6501-CL / HHJ6PL-1X32-E-6501-CL / HH6PL-1X32-E-6501-CL TEST NO.: LLI 0509-15P-P  
 LAMP: GE F32TBX/841/A/ECO LUMENS: 2200 TOTAL LUMINAIRE EFFICIENCY: 62.2% SPACING CRITERIA: 1.26

## Candle Power Distribution (Candelas)



## Zonal Lumens Summary

Zone	Lumens	%Lamp	%Fixt
0-30°	589.4	26.8	43
0-40°	904.2	41.1	66
0-60°	1321.56	60.1	96.5
0-90°	1369.5	62.3	100
90-120°	0	0	0
90-130°	0	0	0
90-150°	0	0	0
90-180°	0	0	0
0-180°	1369.5	62.3	100

Total Luminaire Efficiency =

## Luminance Data (cd/sq.m)

Angle In Degrees	Average 0°	Average 45°	Average 90°
45°	26019	26019	26019
55°	6425	6425	6425
65°	1121	1121	1121
75°	814	814	814
85°	1208	1208	1208

## Zonal Lumen Summary

Zone	Lumens
0-10	58.01
10-20	217.69
20-30	313.7
30-40	314.8
40-50	304.23
50-60	113.13
60-70	37.47
70-80	6.69
80-90	3.78

## Candela Tabulation

Zone	Lumens	Candela
0	0	733
1	733	742
3	742	748
5	748	753
7	753	757
9	757	760
11	760	764
13	764	771
15	771	776
17	776	775
19.5	775	756
22.5	756	726
25.5	726	689
29	689	626
33	626	542
37.5	542	416
42.5	416	283
47.5	283	70
55	70	9
65	9	4
75	4	2
85	2	0
90	0	0

## Beam Angle: 110°

Distance to Plane	Initial Nadir Footcandles	Beam Spread
4'	45.8	11.3'
6'	20.4	17.0'
8'	11.5	22.6'
10'	7.3	28.3'
12'	5.1	34.0'

BEAM DIA. MEASURED AT 10% OF NADIR F.C.

## Coefficients of Utilization - Zonal Cavity Method

Effective Floor Cavity Reflectance 20% = PF

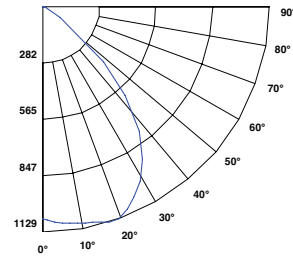
ROOM CAVITY RATIO	RC	80%				70%				50%				30%				10%				0%			
		RW	70%	50%	30%	10%	70%	50%	30%	10%	50%	30%	10%	50%	30%	10%	50%	30%	10%	0%	50%	30%	10%	0%	
0	74	74	74	74	72	72	72	72	69	69	69	66	66	66	64	64	64	62	62	62	62	62	62	62	62
1	70	67	66	64	68	66	64	63	64	62	61	61	60	59	59	58	57	56	56	56	56	56	56	56	56
2	65	61	58	55	64	60	57	55	58	55	53	56	54	52	54	53	51	50	50	50	50	50	50	50	50
3	61	55	51	48	59	54	51	48	53	50	47	51	49	46	50	47	46	44	44	44	44	44	44	44	44
4	56	50	46	43	55	50	45	42	48	45	42	47	44	41	46	43	41	40	40	40	40	40	40	40	40
5	52	46	41	38	51	45	41	38	44	40	37	43	40	37	42	39	37	35	35	35	35	35	35	35	35
6	49	42	37	34	48	41	37	34	40	36	33	39	36	33	38	35	33	32	32	32	32	32	32	32	32
7	46	39	34	31	45	38	34	30	37	33	30	36	33	30	35	32	30	29	29	29	29	29	29	29	29
8	43	35	31	28	42	35	31	28	34	30	27	34	30	27	33	30	27	26	26	26	26	26	26	26	26
9	40	33	28	25	39	32	28	25	32	28	25	31	27	25	31	27	25	24	24	24	24	24	24	24	24
10	38	30	26	23	37	30	26	23	29	26	23	29	25	23	28	25	23	22	22	22	22	22	22	22	22

RC - Ceiling Cavity Reflectance

RW - Wall Reflectance

HH6PL-1X42-E-6501-CL / BHHR6PL-1X42-E-6501-CL / HHR6PL-1X42-E-6501-CL / HHJ6PL-1X42-E-6501-CL / HH6PL-1X42-E-6501-CL TEST NO.: LLI 0509-15P-P  
 LAMP: GE F42TBX/841/A/ECO LUMENS: 3200 TOTAL LUMINAIRE EFFICIENCY: 62.3% SPACING CRITERIA: 1.26

## Candle Power Distribution (Candelas)



## Zonal Lumens Summary

Zone	Lumens	%Lamp	%Fixt
0-30°	857.26	26.8	43
0-40°	1315.19	41.1	66
0-60°	1922.41	60.1	96.5
0-90°	1992.4	62.3	100
90-120°	0	0	0
90-130°	0	0	0
90-150°	0	0	0
90-180°	0	0	0
0-180°	1992.4	62.3	100

Total Luminaire Efficiency =

## Luminance Data (cd/sq.m)

Angle In Degrees	Average 0°	Average 45°	Average 90°
45°	37856	37856	37856
55°	9361	9361	9361
65°	1619	1619	1619
75°	1220	1220	1220
85°	1812	1812	1812

## Zonal Lumen Summary

Zone	Lumens
0-10	84.37
10-20	316.58
20-30	456.31
30-40	457.93
40-50	442.49
50-60	164.73
60-70	54.54
70-80	9.78
80-90	5.68

## Candela Tabulation

Zone	Lumens	Candela
0	0	1066
1	1066	1072
3	1072	1078
5	1078	1089
7	1089	1095
9	1095	1101
11	1101	1105



HH6PL(IC)-2X13-E-6501-CL / BHHR6PL-2X13-E-6501-CL / HHR6PL-2X13-E-6501-CL / HHJ6PL-2X13-E-6501-CL/CH6PL-2X13-E-6501-CL

TEST NO.: LLI 0509-15S-P

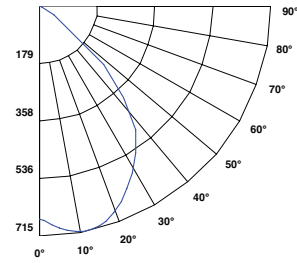
LAMP: GE F13TBX/841/A/ECO

LUMENS: 900

TOTAL LUMINAIRE EFFICIENCY: 67.9%

SPACING CRITERIA: 1.28

### Candle Power Distribution (Candelas)



Beam Angle: 110°		
Distance to Plane	Initial Nadir Footcandles	Beam Spread
4'	41.4	11.1'
6'	18.4	16.7'
8'	10.3	22.2'
10'	6.6	28'
12'	4.6	33.3'

BEAM DIA. MEASURED AT 10% OF NADIR F.C.

### Zonal Lumens Summary

Zone	Lumens	%Lamp	%Fixt
0-30°	525.71	29.2	43
0-40°	801.05	44.5	65.6
0-60°	1185.02	65.8	97
0-90°	1221.97	67.9	100
90-120°	0	0	0
90-130°	0	0	0
90-150°	0	0	0
90-180°	0	0	0
0-180°	1221.97	67.9	100

Total Luminaire Efficiency = 67.9%

### Luminaire Data (cd/sq.m)

Angle In Degrees	Average 0°	Average 45°	Average 90°
45°	24419	24419	24419
55°	4681	4681	4681
65°	872	872	872
75°	814	814	814
85°	1208	1208	1208

### Zonal Lumen Summary

Zone	Lumens
0-10	53.98
10-20	199.48
20-30	272.26
30-40	275.33
40-50	281.1
50-60	102.88
60-70	27.51
70-80	5.66
80-90	3.78

### Candela Tabulation

Zone	Lumens	Candela
0	0	662
1	53.98	668
3	199.48	683
5	272.26	695
7	275.33	704
9	281.1	711
11	102.88	715
13	27.51	714
15	5.66	710
17	3.78	701
19.5		681
22.5		657
25.5		629
29		593
33		544
37.5		488
42.5		386
47.5		270
55		51
65		7
75		4
85		2
90		0

### Coefficients of Utilization - Zonal Cavity Method

Effective Floor Cavity Reflectance 20% = PF

ROOM CAVITY RATIO	RC	80%				70%				50%				30%				10%				0%			
		RW	70%	50%	30%	10%	70%	50%	30%	10%	50%	30%	10%	50%	30%	10%	50%	30%	10%	0%					
0	0	81	81	81	81	79	79	79	79	75	75	75	72	72	72	69	69	69	68	68					
1	1	76	74	72	70	74	72	70	69	69	68	66	67	66	64	64	63	63	61	61					
2	2	71	67	63	60	69	66	62	60	63	61	58	61	59	57	59	57	56	55	55					
3	3	66	60	56	53	65	59	56	52	58	54	51	56	53	51	54	52	50	49	49					
4	4	61	55	50	47	60	54	50	46	53	49	46	51	48	45	50	47	45	43	43					
5	5	57	50	45	41	56	49	45	41	48	44	41	47	43	40	46	43	40	39	39					
6	6	53	46	41	37	52	45	40	37	44	40	37	43	39	36	42	39	36	35	35					
7	7	50	42	37	33	49	42	37	33	41	36	33	40	36	33	39	35	33	31	31					
8	8	47	39	34	30	46	38	34	30	37	33	30	37	33	30	36	32	30	29	29					
9	9	44	36	31	28	43	35	31	28	35	30	27	34	30	27	33	30	27	26	26					
10	10	41	33	28	25	40	33	28	25	32	28	25	32	28	25	31	28	25	24	24					

RC - Ceiling Cavity Reflectance RW - Wall Reflectance

HH6PL(IC)-2X18-E-6501-CL / BHHR6PL-2X18-E-6501-CL / HHR6PL-2X18-E-6501-CL / HHJ6PL-2X18-E-6501-CL/CH6PL-2X18-E-6501-CL

TEST NO.: LLI 0509-15S-P

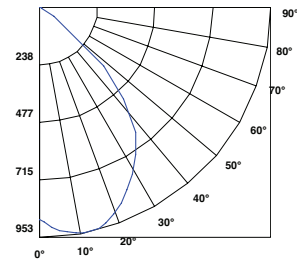
LAMP: GE F18TBX/841/A/ECO

LUMENS: 1200

TOTAL LUMINAIRE EFFICIENCY: 67.9%

SPACING CRITERIA: 1.28

### Candle Power Distribution (Candelas)



Beam Angle: 110°		
Distance to Plane	Initial Nadir Footcandles	Beam Spread
4'	55.1	11.1'
6'	24.5	16.7'
8'	13.8	22.2'
10'	8.8	27.8'
12'	6.1	33.3'

BEAM DIA. MEASURED AT 10% OF NADIR F.C.

### Zonal Lumens Summary

Zone	Lumens	%Lamp	%Fixt
0-30°	701.11	29.2	43
0-40°	1068.48	44.5	65.6
0-60°	1580.63	65.9	97
0-90°	1629.66	67.9	100
90-120°	0	0	0
90-130°	0	0	0
90-150°	0	0	0
90-180°	0	0	0
0-180°	1629.66	67.9	100

Total Luminaire Efficiency = 67.9%

### Luminaire Data (cd/sq.m)

Angle In Degrees	Average 0°	Average 45°	Average 90°
45°	32571	32571	32571
55°	6241	6241	6241
65°	1246	1246	1246
75°	1017	1017	1017
85°	1208	1208	1208

### Zonal Lumen Summary

Zone	Lumens
0-10	71.99
10-20	265.97
20-30	363.15
30-40	367.37
40-50	374.98
50-60	137.17
60-70	36.99
70-80	7.72
80-90	4.32

### Candela Tabulation

Zone	Lumens	Candela
0	0	882
1	71.99	891
3	265.97	911
5	363.15	927
7	367.37	939
9	374.98	948
11	137.17	953
13	36.99	952
15	7.72	947
17	4.32	934
19.5		909
22.5		876
25.5		839
29		791
33		726
37.5		651
42.5		515
47.5		360
55		68
65		10
75		5
85		2
90		0

### Coefficients of Utilization - Zonal Cavity Method

Effective Floor Cavity Reflectance 20% = PF

ROOM CAVITY RATIO	RC	80%				70%				50%				30%				10%				0%			
		RW	70%	50%	30%	10%	70%	50%	30%	10%	50%	30%	10%	50%	30%	10%	50%	30%	10%	0%					
0	0	81	81	81	81	79	79	79	79	75	75	75	72	72	72	69	69	69	68	68					
1	1	76	74	72	70	74	72	70	69	69	68	66	67	66	64	64	63	63	61	61					
2	2	71	67	63	60	69	66	62	60	63	61	58	61	59	57	59	57	56	55	55					
3	3	66	61	56	53	65	60	56	52	58	54	51	56	53	51	54	52	50	49	49					
4	4	61	55	50	47	60	54	50	46	53	49	46	51	48	45	50	47	45	43	43					
5	5	57	50	45	41	56	49	45	41	48	44	41	47	43	40	46	43	40	39	39					
6	6	53	46	41	37	52	45	40	37	44	40	37	43	39	36	42	39	36	35	35					
7	7	50	42	37	33	49	42	37	33	41	36	33	40	36	33	39	35	33	32	32					
8	8	47	39	34	30	46	38	34	30	37	33	30	37	33	30	36	32	30	29	29					
9	9	44	36	31	28	43	35	31	28	35	30	27	34	30	27	33	30	27	26	26					
10	10	41	33	28	25	40	33	28	25	32	28	25	32	28	25	31	28	25	24	24					

RC - Ceiling Cavity Reflectance RW - Wall Reflectance

HH6PL(IC)-2X26-E-6501-CL / BHHR6PL-2X26-E-6501-CL / HHR6PL-2X26-E-6501-CL / HHJ6PL-2X26-E-6501-CL/CH6PL-2X26-E-6501-CL

TEST NO.: LLI 0509-15S-P

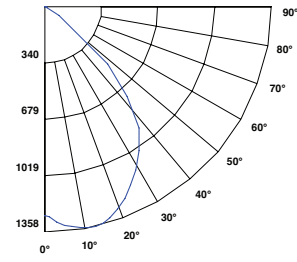
LAMP: GE F26TBX/841/A/ECO

LUMENS: 1710

TOTAL LUMINAIRE EFFICIENCY: 67.9%

SPACING CRITERIA: 1.28

### Candle Power Distribution (Candelas)



Beam Angle: 109°		
Distance to Plane	Initial Nadir Footcandles	Beam Spread
4'	78.6	11.1'
6'	34.9	16.7'
8'	19.6	22.2'
10'	12.6	27.8'
12'	8.7	33.3'

BEAM DIA. MEASURED AT 10% OF NADIR F.C.

### Zonal Lumens Summary

Zone	Lumens	%Lamp	%Fixt
0-30°	998.97	29.2	43
0-40°	1522.09	44.5	65.5
0-60°	2251.87	65.8	97
0-90°	2322.52	67.9	100
90-120°	0	0	0
90-130°	0	0	0
90-150°	0	0	0
90-180°	0	0	0
0-180°	2322.52	67.9	100

Total Luminaire Efficiency = 67.9%

### Luminaire Data (cd/sq.m)

Angle In Degrees	Average 0°	Average 45°	Average 90°
45°	46418	46418	46418
55°	8903	8903	8903
65°	1868	1868	1868
75°	1424	1424	1424
85°	1812	1812	1812

### Zonal Lumen Summary

Zone	Lumens
0-10	102.58
10-20	378.99
20-30	517.39
30-40	523.13
40-50	534.28
50-60	195.5
60-70	53.12
70-80	11.32
80-90	6.21

### Candela Tabulation

Zone	Lumens	Candela
0	0	1257
1	102.58	1269
3	378.99	1298
5	517.39	1321
7	523.13	1338
9	534.28	1351</