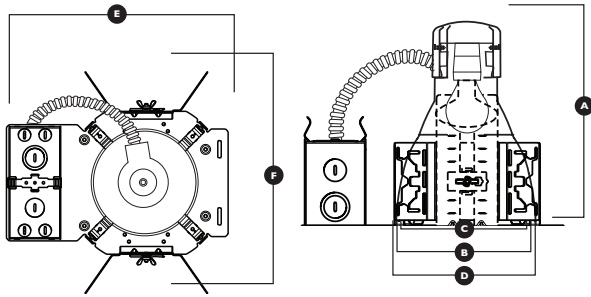


NEW



TRIM: **5101 REFLECTOR**
 MAX. LAMP WATTAGE: **60W-A19 / 50W PAR20 / 13W LED PAR30**



- A. Min. Height = 8-1/2"
- B. Trim Aperture = 5"
- C. Cut-out = 5-3/4"
- D. Trim Outside Diameter = 6-3/8"
- E. Width = 10-1/8"
- F. Length = 10-1/8"



Lumen values rated at 3000K color temperature.

DESCRIPTION

This fixture can support the use of LED PAR replacement lamps.

1. SOCKET CUP - Die-cast aluminum with medium base pulse rated porcelain socket with nickel-plated screw shell, effectively provides heat dissipation and ventilation. Unitized optics guarantees proper trim to housing installation. Tool-less installation and adjustability from either outside the housing or inside the housing allows the fixture to accommodate three different lamp sizes. This fixture can support the use of LED incandescent replacement lamps.

2. MOUNTING BRACKET - Constructed from 16-gauge steel and is supplied with C-channels that are adjustable up to 28". Mounting brackets may be adjusted up to 2-3/4" vertically from inside the housing.

3. RETAINING SPRINGS - Precision tooled springs secure trim to mounting frame, for effortless and tool-less installation.

4. JUNCTION BOX - Is UL listed for through-branch circuit wiring and has four 1/2" KO's, one 3/4" KO and four Romex knockouts with pry-out slots and strain clamps. Junction Box are accessible from below, no tools required.

5. THERMAL PROTECTOR - Meets UL requirements. Standard thermal protection device guards against improper installation, over lamping and misuse of insulation material.

6. MOUNTING FRAME - Die-formed construction for maximum heat dissipation and rust protection.

OPTICS

7. REFLECTOR - Self-flanged .050" aluminum reflector with low iridescent finish. Reflector provides 45-degree lamp-to-reflector image cutoff.

8. GROOVE BAFFLE - Self-flanged one-piece aluminum with concentric rings.

9. LENS - Choice of either tempered clear, tempered prismatic or tempered frosted lens fastened with two torsion springs for easy re-lamping. /UL listed for wet or damp location.



Please visit our website for the most updated information on each product.

ITEM SELECTOR: (Please check the boxes below for the option desired)

TYPE	LAMP LUMEN	VOLTAGE	ANGLE	COLOR TEMPERATURE	TRIM TYPE & DESCRIPTION	REFLECTOR	BAFFLE	GLASS	
C5INC	<input type="checkbox"/> PAR30-500L	<input type="checkbox"/> 120	<input type="checkbox"/> SP (10°)	<input type="checkbox"/> 27K	<input type="checkbox"/> 5101 Reflector	<input type="checkbox"/> 5109 Deco Glass Ring	<input type="checkbox"/> CL-WH	<input type="checkbox"/> W-CL-WH	<input type="checkbox"/> Blue
	<input type="checkbox"/> PAR30-800L	<input type="checkbox"/> 277	<input type="checkbox"/> WS (15°)	<input type="checkbox"/> 30K	<input type="checkbox"/> 5102 Baffle with Reflector	<input type="checkbox"/> 5110 Double Ring Glass	<input type="checkbox"/> CL-SCH	<input type="checkbox"/> P-CL-WH	<input type="checkbox"/> Green
	<input type="checkbox"/> NO LAMP	(277 is not dimmable)	<input type="checkbox"/> NF (25°)	<input type="checkbox"/> 40K	<input type="checkbox"/> 5103 Reflector with Fresnel Glass Lens	<input type="checkbox"/> 5111 Triple Ring Glass	<input type="checkbox"/> SHZ-SHZ	<input type="checkbox"/> W-WH	<input type="checkbox"/> Red
			<input type="checkbox"/> FL (40°)		<input type="checkbox"/> 5104 Reflector with Prismatic Glass Lens	<input type="checkbox"/> 5121 Stardust Deco Ring GLass	<input type="checkbox"/> SHZ-WH	<input type="checkbox"/> P-WH	<input type="checkbox"/> Frost
					<input type="checkbox"/> 5105 Baffle with Fresnel Glass Lens	<input type="checkbox"/> 5122 Euro Deco Ring GLass	<input type="checkbox"/> WT-WH		
					<input type="checkbox"/> 5106 Baffle with Prismatic Glass Lens	<input type="checkbox"/> 5123 Prism Deco Ring GLass	<input type="checkbox"/> W-WH		
					<input type="checkbox"/> 5107 Wall Wash	<input type="checkbox"/> 5124 Geo Deco Ring GLass	<input type="checkbox"/> MB-WH		
					<input type="checkbox"/> 5108 Crossblade	<input type="checkbox"/> 5125 Central Etched Float GLass			
					<input type="checkbox"/> 5112 Baffle with Frosted Glass Lens	<input type="checkbox"/> 5126 Diffusing Screen Wall Wash			
					<input type="checkbox"/> 5113 Baffle with Tempered Clear Glass	<input type="checkbox"/> 5127 Geo Deco Ring GLass			
				<input type="checkbox"/> 5114 Reflector with Frosted Glass Lens					
				<input type="checkbox"/> 5115 Reflector with Tempered Clear Glass					
OTHER OPTION									
	<input type="checkbox"/> BP31								
	(24" C-Channel Bar Hangers)								

Specifications:

C5INC



Sample of Catalog Number: C5INC-120-5101-CL-WH

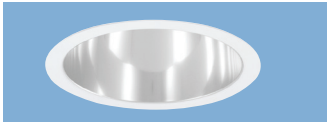
REFLECTOR	BAFFLE	GLASS
CL Clear	WH White	Only available on XX09, XX10 and XX11 series.
SHZ Satin Haze (Low Iridescent)	P Black	
WT Wheat	RING	
MB Black	WH Self-Flange White	
W White	SCH Self-Flange Chrome	
	SHZ Satin Haze	

*For custom baffle, reflector, trim ring, glass color and lens options, please consult factory.

5"

ARCHITECTURAL LED LAMP/INCANDESCENT DOWNLIGHT

5101 -
Reflector



TRIM FINISH:

- CL-WH • WT-WH
- CL-SCH • W-WH
- SHZ-SHZ • MB-WH
- SHZ-WH



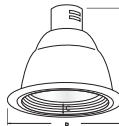
A= 7"
B= 6-3/8"

5102 -
Baffle with Reflector



TRIM FINISH:

- W-CL-WH
- P-CL-WH



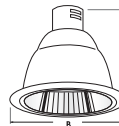
A= 7"
B= 6-3/8"
C= 1"

5107 -
Wall Wash Reflector



TRIM FINISH:

- CL-WH • WT-WH
- CL-SCH • W-WH
- SHZ-SHZ • MB-WH
- SHZ-WH



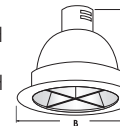
A= 7"
B= 6-3/8"

5108 -
Crossblade Reflector



TRIM FINISH:

- CL-WH • WT-WH
- CL-SCH • W-WH
- SHZ-SHZ • MB-WH
- SHZ-WH



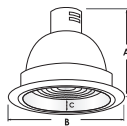
A= 7"
B= 6-3/8"

5103 -
Reflector with Fresnel Glass Lens



TRIM FINISH:

- CL-WH • WT-WH
- CL-SCH • W-WH
- SHZ-SHZ • MB-WH
- SHZ-WH



A= 7"
B= 6-3/8"
C= 1"

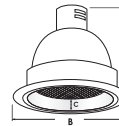


5104 -
Reflector with Prismatic Glass Lens



TRIM FINISH:

- CL-WH • WT-WH
- CL-SCH • W-WH
- SHZ-SHZ • MB-WH
- SHZ-WH



A= 7"
B= 6-3/8"
C= 1"

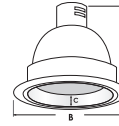


5114 -
Reflector with Frosted Glass Lens



TRIM FINISH:

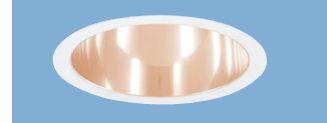
- CL-WH • WT-WH
- CL-SCH • W-WH
- SHZ-SHZ • MB-WH
- SHZ-WH



A= 7"
B= 6-3/8"
C= 1"

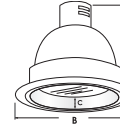


5115 -
Reflector with Tempered Clear Glass



TRIM FINISH:

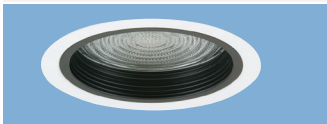
- CL-WH • WT-WH
- CL-SCH • W-WH
- SHZ-SHZ • MB-WH
- SHZ-WH



A= 7"
B= 6-3/8"
C= 1"

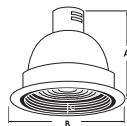


5105 -
Baffle with Fresnel Glass Lens



TRIM FINISH:

- W-WH
- P-WH



A= 7"
B= 6-3/8"
C= 1"

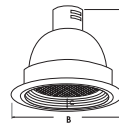


5106 -
Baffle with Prismatic Glass Lens



TRIM FINISH:

- W-WH
- P-WH



A= 7"
B= 6-3/8"
C= 1"

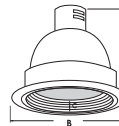


5112 -
Baffle with Frosted Glass Lens



TRIM FINISH:

- W-WH
- P-WH



A= 7"
B= 6-3/8"
C= 1"

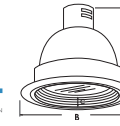


5113 -
Baffle with Tempered Clear Glass



TRIM FINISH:

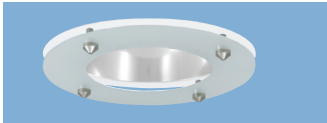
- W-WH
- P-WH



A= 7"
B= 6-3/8"
C= 1"



5109 -
Deco Glass Reflector



REFLECTOR FINISH:
CL, WT, MB, SHZ, W

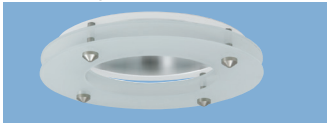
RING FINISH:
WH, SCH, SHZ

GLASS FINISH:
BLUE, RED, GREEN, FROST



A= 7"
B= 6-3/8"
C= 1-1/4"

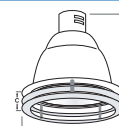
5110 -
Double Ring Glass



REFLECTOR FINISH:
CL, WT, MB, SHZ, W

RING FINISH:
WH, SCH, SHZ

GLASS FINISH:
BLUE, RED, GREEN, FROST



A= 7"
B= 6-3/8"
C= 1-1/2"

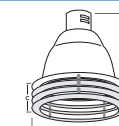
5111 -
Triple Ring Glass



REFLECTOR FINISH:
CL, WT, MB, SHZ, W

RING FINISH:
WH, SCH, SHZ

GLASS FINISH:
BLUE, RED, GREEN, FROST



A= 7"
B= 6-3/8"
C= 2-1/4"

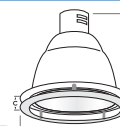
5125 -
Center Etched Float Glass



REFLECTOR FINISH:
CL, WT, MB, SHZ, W

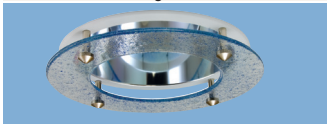
RING FINISH:
WH, SCH, SHZ

*Also available in:
5126 -
Diffusing Screen Wall Wash



A= 7"
B= 6-3/8"
C= 1-1/4"

5121 -
Stardust Deco Ring Glass



REFLECTOR FINISH:
CL, WT, MB, SHZ, W

RING FINISH:
WH, SCH, SHZ



A= 7"
B= 6-3/8"
C= 1-1/4"

5122 -
Euro Deco Ring Glass



REFLECTOR FINISH:
CL, WT, MB, SHZ, W

RING FINISH:
WH, SCH, SHZ



A= 7"
B= 6-3/8"
C= 1-1/4"

5123 -
Prism Deco Ring Glass



REFLECTOR FINISH:
CL, WT, MB, SHZ, W

RING FINISH:
WH, SCH, SHZ



A= 7"
B= 6-3/8"
C= 1-1/4"

5124 -
Geo Deco Ring Glass



REFLECTOR FINISH:
CL, WT, MB, SHZ, W

RING FINISH:
WH, SCH, SHZ

*Also available in:
5127 -
Geo Deco Ring Glass



A= 7"
B= 6-3/8"
C= 1-1/4"