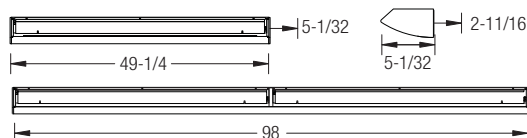
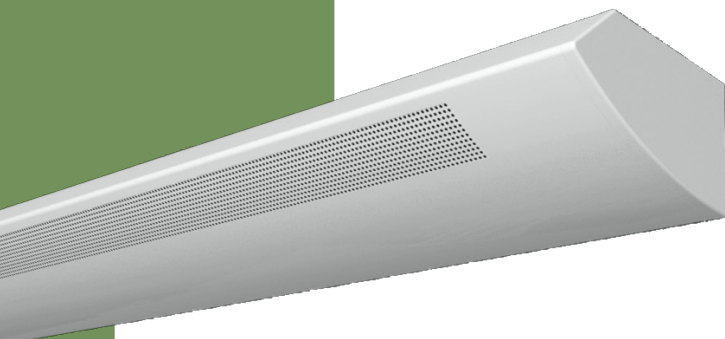


ASW1

Series

T8/T5 LINEAR FLUORESCENT DIRECT/INDIRECT PERFORATED (WALL MOUNT)



APPLICATION:

- Sconce application for hospitality, rest rooms, corridors and small offices
- Wall mount indirect luminaire with forward throw optics

PRODUCT FEATURES:

- Reflector white forward throw steel
- Units are shipped with die cast aluminum joiners installed for structural continuity and for attaching other units for continuous mounting or end caps
- The units mount to a wall bracket that compensates for uneven surface and allows for recessed electrical boxes. The brackets are 25 5/32"; or 48 3/4" and two of the 48 3/4" brackets are required for the eight foot housing
- A computer designed optical system maximizes the output of the (2) T5 or (2) T8 lamps producing minimal back light and maximum forward throw.
- Ballast mounting assembly allows for easy installation separate from housing and then installs with two fasteners
- Architectural die cast chamfered aluminum ends are available for a complete designer look without exposed fasteners
- Fixtures are designed with a perforated hole pattern that provides limited downlight contribution and adds a horizontal glow to the fixture design
- NEC required ballast disconnect is standard.
- CEE qualified ballast found standard on most fixture options (Consult factory for details).

FINISHES:

- White powder coated 20 gauge roll formed steel housing in solid or perforated pattern

LISTING - UL/ C-UL listed to US and Canadian Standards.

WARRANTY - Guaranteed for one year against mechanical defects.

Ordering Information EXAMPLE: 4-ASW1-I-32-T8

ASW1

FIXTURE SIZE

4 - 4'

8 - 8'

SERIES

ASW1-Oracle

Architectural Wall Series

WATTAGE

4' FIXTURE

1-28-T5 (1 lamp/28W/T5)

1-54-T5HO (1 lamp/54W/T5HO)

2-28-T5 (2 lamps/28W/T5)

2-54-T5HO (2 lamps/54W/T5HO)

1-32-T8 (1 lamp/32W/T8)

2-32-T8 (2 lamps/32W/T8)

8' TANDEM FIXTURE

2-28-T5 (2 lamps/28W/T5)

2-54-T5HO (2 lamps/54W/T5HO)

2-32-T8 (2 lamps/32W/T8)

4-28-T5 (4 lamps/28W/T5)

4-54-T5HO (4 lamps/54W/T5HO)

4-32-T8 (4 lamps/32W/T8)

BALLAST CONFIGURATION & CODE

32W/T8	28W/T5	54W/T5HO	DESCRIPTION
(Blank)	-	-	Electronic Instant Start
EPS	(Blank) ¹	(Blank)	Electronic Program Start
ADV-7	-	ADV-7 ¹	Advance Mark-7 ²
ADV-10 ¹	-	ADV-10 ¹	Advance Mark-10 ²
-	ADV-OPT	-	Advance Optanium ²
ADV-ESS ¹	-	-	Advance Essential ²
ADV-ROVR	-	ADV-ROVR ¹	Advance Rover ²
LUT-EHD ¹	LUT-EHD ¹	LUT-EHD ¹	Lutron Ecosystem H-Series ²
LUT-2W ¹	-	-	Lutron Tu-Wire ²
LUT-EC5 ¹	LUT-EC5 ¹	-	Lutron Ecosystem ²
LUT-EC3 ¹	LUT-EC3 ¹	LUT-EC3 ¹	Lutron Eco-10 ²
LUT-TVE ¹	-	-	Lutron Tve ²
LUT-H3D ¹	LUT-H3D ¹	LUT-H3D ¹	Lutron Hi-Lume 3D ²
-	-	LUT-ECD ¹	Lutron Ecosystem (347V Only) ²

VOLTAGE²

(Blank) - MVOLT (120/277)

120

277

347

OF BALLAST

(Blank) -1 Ballast

2 -2 Ballasts

BALLAST FACTOR

(Blank)- Normal BF

HBF- High BF

LBF- Low BF

EMERGENCY BATTERY PACK OPTIONS (L. = LUMENS)

ORDER CODE	DESCRIPTION
EMG-T8-BX-450	Up to 450 L. for T8 or BX
EMG-T8-BX-600	Up to 600 L. for T8 or BX
EMG-T8-BX-700	Up to 700 L. for T8 or BX
EMG-T8-BX-1400	Up to 1400 L. for T8 or BX
EMG-T5-520	Up to 520 L. for T5
EMG-T5-T5HO-700	Up to 700 L. for T5 or T5HO
EMG-T5-T5HO-1300	Up to 1300 L. for T5 or T5HO
EMG-T8-BX-T5-T5HO-3200	Up to 3200 L. for T8, BX, T5 or T5HO
EMG-SD-T8-BX-T5-T5HO-1400	Self-Diagnostic 1400 L. for T8, BX, T5 or T5HO
EMG-ICE-T8-BX-T5-T5HO-1400	ICE Pack 1400 L. for T8, BX, T5 or T5HO

WIRING OPTIONS

BFB	- Internal Fast Blow Fuse
SBF	- Internal Slow-Blow Fuse
RIS	- Radio Interference Suppressor

OTHER OPTIONS

USA

- Made in America Compliance

1- Requires 2 Ballasts for 4 lamps

2- Voltage must be specified for dimming ballast.

1- Requires 2 Ballasts for 4 lamps

2- Voltage must be specified for dimming ballast.

ORACLE
(LIGHTING)

WWW.ORACLELIGHTING.COM

• TEL: 1-877-375-5555

• FAX: 1-877-375-3333