

A2-ADJ-LED

2" Architectural New Construction
Adjustable LED Downlight

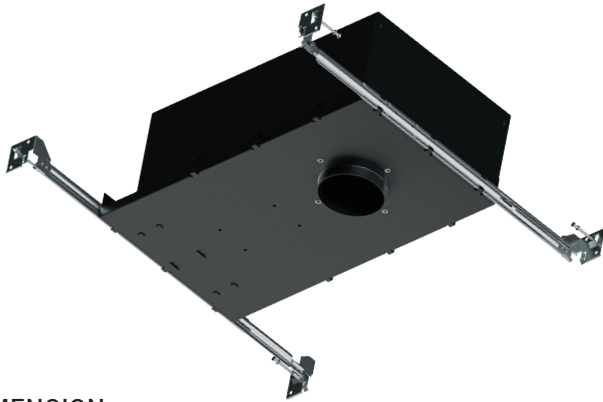
up to 17 Watts / up to 1000 Lumens

Catalog Number:

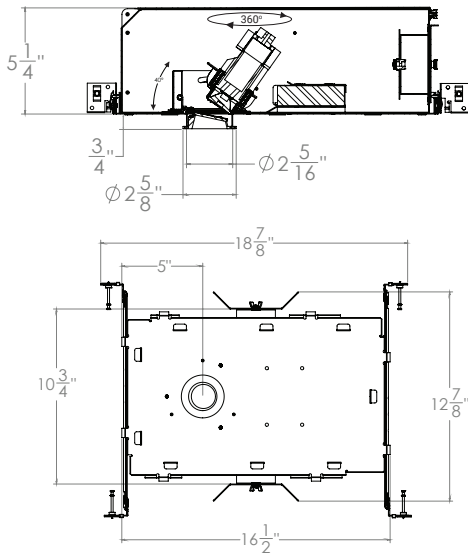
Project Name:

Note:

Type:



DIMENSION



OPTICS



DESCRIPTION

The A2-ADJ-LED architectural adjustable downlight provides unparalleled versatility in a small 2" aperture, delivering a powerful and precise beam of light, with uniform, glare-free illumination.

TECHNOLOGY

A2-ADJ provides multiple beam distributions, 90+ CRI, with lumen packages up to 1000 lumens, and a dimming standard down to 1%. A2 features field-changeable optics for versatility and easy updating of optics in the field. Tilt angles are available from 0 degree to 40 degree with a full 360-degree horizontal rotation.

HOUSING

The downlight mounting frame is a fabricated assembly constructed of 18-gauge steel, with C-channel mounting brackets, included. The versatility of the mounting brackets allow for an adjustability of up to 24" horizontally, and 1.5" vertically, locking into place. With the added die-formed construction of the mounting frame, it provides maximum heat dissipation and rust protection. Also has WallWash Option.

TRIMS

Offered with interchangeable round and square trims, multiple finish options, it provides the Elite source in flexibility.

THERMAL MANAGEMENT SYSTEM

Passive cooling Diecast Aluminum Heat Sink, LED light engine and driver are tency in the quality of light is delivered with precision performance by the use of a unique locking mechanism that aligns the reflector with the light engine.

MOUNTING FRAME & BRACKETS

The downlight mounting frame is a fabricated assembly constructed of 18-gauge steel, with C-channel mounting brackets, included. The versatility of the mounting brackets allow for an adjustability of up to 24" horizontally, and 1.5" vertically, locking into place. With the added die-formed construction of the mounting frame, it provides maximum heat dissipation and rust protection.

Available with optional wet location trim.

SPECIFICATIONS:

LUMENS	800 / 1000 lumens
WATTAGE	13W / 17W
CCT	27K, 30K, 35K, 40K
CRI	90
LIGHT EFFICIENCY	up to 63 lumens/watt
DIMMING	0-10V Dimming / Triac Dimming
VOLTAGE	120-277 VAC
POWER FREQUENCY	50/60 Hz
FINISH	Black
APPLICABLE ENVIRONMENT	Dry/Damp Location

Ordering Guide > Example: A2-ADJ-LED-800L-DIM10-MVOLT-MD-30K-90-A2R-F-1201-W-WH

A2-ADJ-LED																																
SERIES	PERFORMANCE	DIMMING	VOLTAGE	OPTICS	CCT	CRI	TRIMS/COLORS																									
A2-ADJ-LED-2" Architectural New Construction Adjustable Downlight	800L - 800 lumens 1000L - 1000 lumens	DIM10 - 0-10V Dimming DIMTR / Triac Dimming	MVOLT- 120-277V 120V- Only for DIMTR	SP - (Spot) ND - (Narrow) MD - (Medium) WD - (Wide)	27K - 2700K 30K - 3000K 35K - 3500K 40K - 4000K	90 - 90 CRI	<table border="1"> <thead> <tr> <th>ROUND</th> <th>COLORS</th> </tr> </thead> <tbody> <tr><td>A2R-F-1201</td><td>W-WH, SN-SN</td></tr> <tr><td>A2R-F-1202</td><td>W-WH, CL-WH, SN-SN</td></tr> <tr><td>A2R-F-1227</td><td>W-WH, SN-SN</td></tr> <tr><td>A2R-F-1228</td><td>W-WH, CL-WH, SN-SN</td></tr> <tr><td>A2R-F-1263</td><td>W-WH, CL-WH</td></tr> <tr> <th>SQUARE</th> <th>COLORS</th> </tr> <tr><td>A2S-F-1201</td><td>W-WH</td></tr> <tr><td>A2S-F-1202</td><td>W-WH</td></tr> <tr><td>A2S-F-1227</td><td>W-WH</td></tr> <tr><td>A2S-F-1228</td><td>W-WH</td></tr> <tr><td>A2S-F-1263</td><td>W-WH</td></tr> </tbody> </table>		ROUND	COLORS	A2R-F-1201	W-WH, SN-SN	A2R-F-1202	W-WH, CL-WH, SN-SN	A2R-F-1227	W-WH, SN-SN	A2R-F-1228	W-WH, CL-WH, SN-SN	A2R-F-1263	W-WH, CL-WH	SQUARE	COLORS	A2S-F-1201	W-WH	A2S-F-1202	W-WH	A2S-F-1227	W-WH	A2S-F-1228	W-WH	A2S-F-1263	W-WH
ROUND	COLORS																															
A2R-F-1201	W-WH, SN-SN																															
A2R-F-1202	W-WH, CL-WH, SN-SN																															
A2R-F-1227	W-WH, SN-SN																															
A2R-F-1228	W-WH, CL-WH, SN-SN																															
A2R-F-1263	W-WH, CL-WH																															
SQUARE	COLORS																															
A2S-F-1201	W-WH																															
A2S-F-1202	W-WH																															
A2S-F-1227	W-WH																															
A2S-F-1228	W-WH																															
A2S-F-1263	W-WH																															

A2-ADJ-LED

2" Architectural New Construction
Adjustable LED Downlight

Catalog Number:

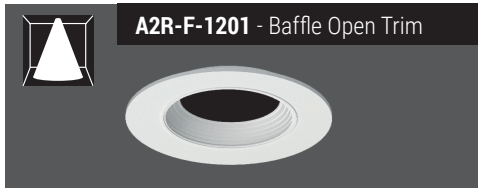
Project Name:

Note:

Type:

ROUND / SQUARE TRIMS

Round Flanged Trims



A2R-F-1201 - Baffle Open Trim

AVAILABLE COLOR OPTIONS:
W-WH (White-White)
SN-SN (Satin Nickel-Satin Nickel)

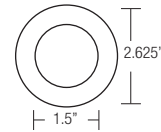


A2R-F-1227 - Baffle Lensed Trim

FOR WET LOCATION
AVAILABLE COLOR OPTIONS:
W-WH (White-White)
SN-SN (Satin Nickel-Satin Nickel)

TRIM OPTION:

Post painted powder coated Die-Cast trim available in white and custom colors. Please consult factory for custom paint color options. Trims attach to the housing with piano springs for snug fit and zero light leakage.



A2R-F-1202 - Reflector Open Trim

AVAILABLE COLOR OPTIONS:
W-WH (White-White)
CL-WH (Clear-White)
SN-SN (Satin Nickel-Satin Nickel)



A2R-F-1228 - Reflector Lensed Trim

FOR WET LOCATION
AVAILABLE COLOR OPTIONS:
W-WH (White-White)
CL-WH (Clear-White)
SN-SN (Satin Nickel-Satin Nickel)



A2R-F-1263 - Wall Wash Trim

AVAILABLE COLOR OPTIONS:
W-WH (White-White)
CL-WH (Clear-White)

Square Flanged Trims



A2S-F-1201 - Baffle Open Trim

AVAILABLE COLOR OPTION:
W-WH (White-White)

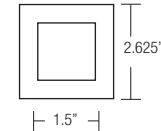


A2S-F-1227 - Baffle Lensed Trim

FOR WET LOCATION
AVAILABLE COLOR OPTION:
W-WH (White-White)

TRIM OPTION:

Post painted powder coated Die-Cast trim available in white and custom colors. Please consult factory for custom paint color options. Trims attach to the housing with piano springs for snug fit and zero light leakage.



A2S-F-1202 - Reflector Open Trim

AVAILABLE COLOR OPTION:
W-WH (White-White)



A2S-F-1228 - Reflector Lensed Trim

FOR WET LOCATION
AVAILABLE COLOR OPTION:
W-WH (White-White)



A2S-F-1263 - Wall Wash Trim

AVAILABLE COLOR OPTIONS:
W-WH (White-White)

A2-ADJ-LED-1000L-DIM10-MVOLT-ND-40K-90-A2S-F-1201

TEST NO.: EL09131992

INPUT WATTS: **17.0375**

LUMENS: **1115**

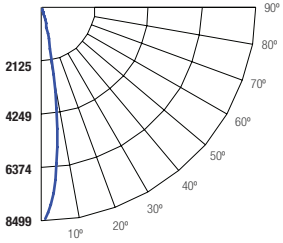
CRI: **90**

EFFICACY: **65**

CCT: **4000K**

SPACING CRITERIA: **0.34**

Candle Power Distribution (Candelas)



Cone of Light			
2	2,929	0.6	0.6
4	777	1.1	1.1
6	339	1.7	1.7
8	189	2.3	2.3
10	123	2.9	2.8
12	84.6	3.5	3.4

BEAM DIA. MEASURED AT 50% OF NADIR F.C.

Zonal Lumens Summary

Zone	Lumens	%Lamp	%Fixt
0-20	1019.44	91.40	91.40
0-30	1084.64	97.30	97.30
0-40	1093.67	98.10	98.10
0-60	1108.88	99.40	99.40
0-80	1114.12	99.90	99.90
0-90	1114.18	99.90	99.90

Luminance (Average candela/M²)

Angle in Degrees	Average		
	0°	45°	90°
45	4555	4909	4793
55	4118	4494	4685
65	2875	2908	3288
75	767	952	1455
85	39	39	39

Lumens Per Zone

Zone	Lumens
0-10	585.29
10-20	434.15
20-30	65.20
30-40	9.03
40-50	7.93
50-60	7.28
60-70	4.11
70-80	1.14
80-90	0.05

Candela Tabulation

Q	
0	8463.45
5	6842.53
15	1007.39
25	57.77
35	10.61
45	9.41
55	6.90
65	3.55
75	0.58
85	0.01
90	0.01

Coefficients of Utilization - Zonal Cavity Method

Effective Floor Cavity Reflectance 0.20

RC	80%				70%				50%				30%				10%				0%
	RW	70%	50%	30%	10%	70%	50%	30%	10%	50%	30%	10%	50%	30%	10%	50%	30%	10%			
0	119	119	119	119	116	116	116	116	111	111	111	111	106	106	106	102	102	102	100		
1	115	114	112	110	113	111	110	109	107	106	105	105	104	103	102	100	100	99	98		
2	112	109	106	104	110	107	105	103	104	102	101	101	101	100	99	99	98	97	95		
3	109	105	102	100	108	104	101	99	101	99	97	97	97	97	96	97	96	94	93		
4	107	102	99	96	105	101	98	95	99	96	94	94	97	95	93	96	94	92	91		
5	104	99	96	93	103	98	95	93	97	94	92	92	95	93	91	94	92	90	89		
6	102	97	93	90	101	96	93	90	95	92	90	93	91	89	92	90	89	88	88		
7	100	94	91	88	99	94	90	88	93	90	88	92	89	87	91	89	87	86	86		
8	98	92	89	86	97	92	89	86	91	88	86	90	88	86	89	87	85	85	85		
9	96	90	87	85	95	90	87	85	89	86	84	89	86	84	88	86	84	83	83		
10	94	89	85	83	94	88	85	83	88	85	83	87	85	83	87	84	83	82	82		

RC - Ceiling Cavity Reflectance RW - Wall Reflectance

A2-ADJ-LED-1000L-DIM10-MVOLT-ND-40K-90-A2S-F-1227

TEST NO.: EL09131994

INPUT WATTS: **17.0128**

LUMENS: **1014**

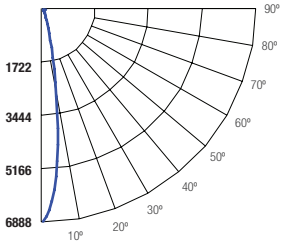
CRI: **90**

EFFICACY: **60**

CCT: **4000K**

SPACING CRITERIA: **0.36**

Candle Power Distribution (Candelas)



Cone of Light			
2	2,367	0.6	0.6
4	628	1.2	1.2
6	274	1.8	1.8
8	152	2.4	2.4
10	99.3	3.0	2.9
12	68.4	3.6	3.5

BEAM DIA. MEASURED AT 50% OF NADIR F.C.

Zonal Lumens Summary

Zone	Lumens	%Lamp	%Fixt
0-20	894.09	88.20	88.20
0-30	975.76	96.30	96.30
0-40	989.96	97.70	97.70
0-60	1006.74	99.30	99.30
0-80	1012.6	99.90	99.90
0-90	1012.64	99.90	99.90

Luminance (Average candela/M²)

Angle in Degrees	Average		
	0°	45°	90°
45	4918	4991	5330
55	4058	4219	4625
65	2948	2916	3378
75	807	1045	1587
85	39	39	39

Lumens Per Zone

Zone	Lumens
0-10	477.56
10-20	416.53
20-30	81.67
30-40	14.20
40-50	9.29
50-60	7.48
60-70	4.45
70-80	1.41
80-90	0.04

Candela Tabulation

Q	
0	6841.11
5	5405.28
15	1040.65
25	78.51
35	14.34
45	10.16
55	6.80
65	3.64
75	0.61
85	0.01
90	0.01

Coefficients of Utilization - Zonal Cavity Method

Effective Floor Cavity Reflectance 0.20

RC	80%				70%				50%				30%				10%				0%
	RW	70%	50%	30%	10%	70%	50%	30%	10%	50%	30%	10%	50%	30%	10%	50%	30%	10%			
0	119	119	119	119	116	116	116	116	111	111	111	111	106	106	106	102	102	102	100		
1	115	113	112	110	113	111	110	108	107	106	105	105	104	103	102	100	99	99	97		
2	112	109	106	103	110	107	104	102	104	102	100	100	101	99	98	98	97	96	94		
3	109	104	101	98	107	103	100	98	101	98	96	96	98	96	95	96	95	93	92		
4	106	101	97	95	104	100	97	94	98	95	93	96	94	92	94	93	91	90	89		
5	103	98	94	91	102	97	94	91	95	92	90	94	91	89	93	90	89	88	88		
6	101	95	91	89	100	94	91	88	93	90	88	92	89	87	91	88	87	86	86		
7	98	93	89	86	97	92	89	86	91	88	86	90	87	85	89	87	85	84	84		
8	96	90	87	84	95	90	86	84	89	86	84	88	85	83	87	85	83	82	82		
9	94	88	85	82	93	88	84	82	87	84	82	86	84	82	86	83	81	81	81		
10	92	86	83	81	92	86	83	80	85	82	80	85	82	80	84	82	80	79	79		

RC - Ceiling Cavity Reflectance RW - Wall Reflectance

A2-ADJ-LED-1000L-DIM10-MVOLT-SP-40K-90-A2R-F-1201

TEST NO.: EL092619168

INPUT WATTS: **17.1393**

LUMENS: **1183**

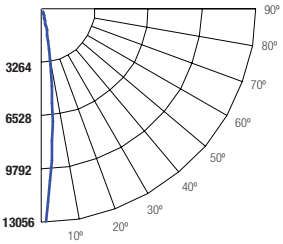
CRI: **90**

EFFICACY: **69**

CCT: **4000K**

SPACING CRITERIA: **0.28**

Candle Power Distribution (Candelas)



Cone of Light			
2	4,299	0.4	0.4
4	1,141	0.8	0.8
6	497	1.3	1.3
8	277	1.7	1.7
10	180	2.1	2.1
12	124	2.6	2.5

BEAM DIA. MEASURED AT 50% OF NADIR F.C.

Zonal Lumens Summary

Zone	Lumens	%Lamp	%Fixt
0-20	1081.12	91.40	91.40
0-30	1158.66	97.90	97.90
0-40	1166.55	98.60	98.60
0-60	1177.88	99.60	99.60
0-80	1181.98	99.90	99.90
0-90	1182.02	99.90	99.90

Luminance (Average candela/M²)

Angle in Degrees	Average		
	0°	45°	90°
45	3485	3461	3742
55	3217	3264	3563
65	2163	2260	2713
75	423	661	1323
85	39	39	39

Lumens Per Zone

Zone	Lumens
0-10	671.36
10-20	409.75
20-30	77.54
30-40	7.89
40-50	5.97
50-60	5.36
60-70	3.20
70-80	0.90
80-90	0.04

Candela Tabulation

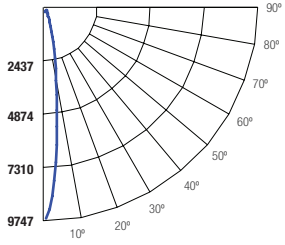
Q	
0	12423.61
5	7186.38
15	895.37
25	57.67
35	8.52
45	7.20
55	5.39

A2-ADJ-LED-1000L-DIM10-MVOLT-SP-40K-90-A2R-F-1227

TEST NO.: EL092619166

INPUT WATTS: **17.1591** LUMENS: **1100** CRI: **90** EFFICACY: **64** CCT: **4000K** SPACING CRITERIA: **0.30**

Candle Power Distribution (Candelas)



Zonal Lumens Summary

Zone	Lumens	%Lamp	%Fixt
0-20	977.13	88.80	88.80
0-30	1069.03	97.20	97.20
0-40	1081.67	98.30	98.30
0-60	1095.35	99.60	99.60
0-80	1098.85	99.90	99.90
0-90	1098.9	99.90	99.90

Luminance (Average candela/M²)

Angle in Degrees	Average		
	0°	45°	90°
45	4095	4057	4488
55	3414	3581	4225
65	1920	2098	2406
75	489	754	1217
85	79	79	39

Lumens Per Zone

Zone	Lumens
0-10	563.14
10-20	413.99
20-30	91.90
30-40	12.64
40-50	7.53
50-60	6.15
60-70	2.73
70-80	0.77
80-90	0.05

Candela Tabulation

Q	
0	9548.02
5	6207.56
15	1025.61
25	80.25
35	11.92
45	8.46
55	5.72
65	2.37
75	0.37
85	0.02
90	0.02

Coefficients of Utilization - Zonal Cavity Method

Effective Floor Cavity Reflectance 0.20

ROOM CAVITY RATIO	RC		80%				70%				50%				30%				10%				0%
	RW	70%	50%	30%	10%	70%	50%	30%	10%	50%	30%	10%	50%	30%	10%	50%	30%	10%	50%	30%	10%	0%	
0	119	119	119	119	119	116	116	116	116	111	111	111	111	111	111	106	106	106	102	102	102	100	
1	115	114	112	110	110	113	111	110	108	107	106	105	104	103	102	104	103	102	100	100	99	97	
2	112	109	106	104	104	110	107	105	103	104	102	101	101	100	98	101	100	98	99	98	96	95	
3	109	105	102	99	99	107	104	101	98	101	99	97	97	96	94	99	97	95	97	95	94	93	
4	106	102	98	96	96	105	101	97	95	99	96	94	94	93	91	97	95	93	95	93	92	91	
5	104	99	95	92	92	103	98	95	92	96	94	91	91	90	88	95	92	91	94	91	90	89	
6	102	96	93	90	90	100	95	92	90	94	91	89	89	88	86	93	90	89	92	90	88	87	
7	99	94	90	88	88	98	93	90	87	92	89	87	87	86	84	91	89	87	90	88	86	85	
8	97	92	88	86	86	96	91	88	86	90	87	85	85	84	82	89	87	85	89	86	85	84	
9	95	90	86	84	84	95	89	86	84	89	86	84	84	83	81	88	85	83	87	85	83	82	
10	94	88	85	82	82	93	88	84	82	87	84	82	82	81	80	86	84	82	86	83	82	81	

RC - Ceiling Cavity Reflectance RW - Wall Reflectance

Cone of Light			
2	3,304	0.5	0.5
4	877	1.0	0.9
6	382	1.4	1.4
8	213	1.9	1.9
10	139	2.4	2.4
12	95.5	2.9	2.8

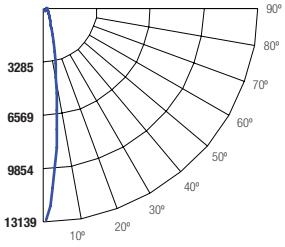
BEAM DIA. MEASURED AT 50% OF NADIR F.C.

A2-ADJ-LED-1000L-DIM10-MVOLT-SP-40K-90-A2S-F-1201

TEST NO.: EL092619169

INPUT WATTS: **17.1515** LUMENS: **1162** CRI: **90** EFFICACY: **68** CCT: **4000K** SPACING CRITERIA: **0.28**

Candle Power Distribution (Candelas)



Zonal Lumens Summary

Zone	Lumens	%Lamp	%Fixt
0-20	1068.31	92.00	92.00
0-30	1136.29	97.80	97.80
0-40	1143.43	98.40	98.40
0-60	1155.87	99.50	99.50
0-80	1160.37	99.90	99.90
0-90	1160.43	99.90	99.90

Luminance (Average candela/M²)

Angle in Degrees	Average		
	0°	45°	90°
45	3921	4100	3805
55	3634	3754	3766
65	2511	2495	2762
75	503	675	1164
85	79	39	79

Lumens Per Zone

Zone	Lumens
0-10	671.02
10-20	397.29
20-30	67.97
30-40	7.15
40-50	6.46
50-60	5.98
60-70	3.54
70-80	0.96
80-90	0.05

Candela Tabulation

Q	
0	12579.13
5	7221.88
15	792.93
25	47.01
35	8.65
45	8.10
55	6.09
65	3.10
75	0.38
85	0.02
90	0.02

Coefficients of Utilization - Zonal Cavity Method

Effective Floor Cavity Reflectance 0.20

ROOM CAVITY RATIO	RC		80%				70%				50%				30%				10%				0%
	RW	70%	50%	30%	10%	70%	50%	30%	10%	50%	30%	10%	50%	30%	10%	50%	30%	10%	50%	30%	10%	0%	
0	119	119	119	119	119	116	116	116	116	111	111	111	111	111	111	106	106	106	102	102	102	100	
1	116	114	112	111	111	113	112	110	109	108	107	106	106	105	104	104	103	102	101	100	99	97	
2	113	109	107	105	105	111	108	105	104	105	103	101	101	100	98	100	98	97	99	98	97	96	
3	110	106	103	100	100	108	105	102	100	102	100	98	98	96	94	98	96	94	96	95	94	93	
4	107	103	99	97	97	106	102	99	96	100	97	95	95	94	92	98	94	92	95	93	92	91	
5	105	100	97	94	94	104	99	96	94	98	95	93	93	92	90	96	94	92	95	93	92	91	
6	103	98	94	92	92	102	97	94	92	96	93	91	91	90	88	95	92	90	94	92	90	89	
7	101	96	92	90	90	100	95	92	90	94	91	89	89	88	86	93	91	89	92	90	88	88	
8	99	94	90	88	88	98	93	90	88	92	90	88	88	87	85	92	89	87	91	89	87	86	
9	97	92	89	87	87	97	92	89	86	91	88	86	86	85	83	90	88	86	90	87	86	85	
10	96	90	87	85	85	95	90	87	85	89	87	85	85	84	82	89	86	85	88	86	85	84	

RC - Ceiling Cavity Reflectance RW - Wall Reflectance

Cone of Light			
2	4,299	0.4	0.4
4	1,141	0.8	0.8
6	497	1.3	1.3
8	277	1.7	1.7
10	180	2.1	2.1
12	124	2.6	2.5

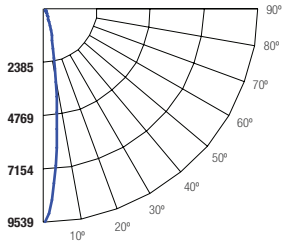
BEAM DIA. MEASURED AT 50% OF NADIR F.C.

A2-ADJ-LED-1000L-DIM10-MVOLT-SP-40K-90-A2S-F-1227

TEST NO.: EL092619167

INPUT WATTS: **17.1406** LUMENS: **1062** CRI: **90** EFFICACY: **62** CCT: **4000K** SPACING CRITERIA: **0.30**

Candle Power Distribution (Candelas)



Zonal Lumens Summary

Zone	Lumens	%Lamp	%Fixt
0-20	945.33	89.00	89.00
0-30	1028.19	96.80	96.80
0-40	1040.9	98.00	98.00
0-60	1055.93	99.40	99.40
0-80	1061.18	99.90	99.90
0-90	1061.23	99.90	99.90

Luminance (Average candela/M²)

Angle in Degrees	Average		
	0°	45°	90°
45	4444	4623	4875
55	3849	4040	4225
65	2859	2908	3207
75	833	1124	1547
85	79	39	79

Lumens Per Zone

Zone	Lumens
0-10	549.73
10-20	395.60
20-30	82.87
30-40	12.71
40-50	8.31
50-60	6.71
60-70	4.03
70-80	1.22
80-90	0.05

Candela Tabulation

Q	
0	9313.74
5	6061.29
15	938.03
25	69.50
35	12.41
45	9.18
55	6.45
65	3.53
75	0.63
85	0.02
90	0.02

Coefficients of Utilization - Zonal Cavity Method

Effective Floor Cavity Reflectance 0.20

ROOM CAVITY RATIO	RC		80%				70%				50%				30%				10%				0%
	RW	70%	50%	30%	10%	70%	50%	30%	10%	50%	30%	10%	50%	30%	10%	50%	30%	10%	50%	30%	10%	0%	
0	119	119	119	119	119	116	116	116	116	111	111	111	111	111	111	106	106	106	102	102	102	100	
1	115	113	112	110	110	113	111	110	108	107	106	105	104	103	102	104	103	102	100	100	99	97	
2	112	109	106	104	104	110	107	105	103	104	102	101	101	100	98	101	100	98	99	98	96	95	
3	109	105	102	99	99	107	104	101	98	101	99	97	97	96	94	99	97	95	97	95	94	93	
4	106	102	98	95	95	105	101	97	95	99	96	94	94	93	91	97	95	93	95				

A2-ADJ-LED-1000L-DIM10-MVOLT-WD-40K-90-A2R-F-1201

TEST NO.: EL09121974

INPUT WATTS: **17.292**

LUMENS: **820**

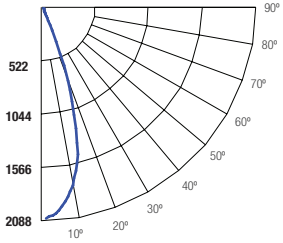
CRI: **90**

EFFICACY: **47**

CCT: **4000K**

SPACING CRITERIA: **0.58**

Candle Power Distribution (Candelas)



Zonal Lumens Summary

Zone	Lumens	%Lamp	%Fixt
0-20	576.64	70.40	70.40
0-30	744.25	90.80	90.80
0-40	766.75	93.50	93.50
0-60	805.31	98.30	98.30
0-80	818.32	99.80	99.80
0-90	818.37	99.80	99.80

Luminance (Average candela/M²)

Angle in Degrees	Average		
	0°	45°	90°
45	12857	12035	11841
55	11232	11208	11554
65	7192	7500	8343
75	1521	2288	3571
85	79	79	79

Lumens Per Zone

Zone	Lumens
0-10	185.16
10-20	391.48
20-30	167.61
30-40	22.50
40-50	20.54
50-60	18.02
60-70	10.27
70-80	2.74
80-90	0.05

Candela Tabulation

Q	
0	2046.59
5	1954.06
15	1339.65
25	175.79
35	30.68
45	26.56
55	18.82
65	8.88
75	1.15
85	0.02
90	0.02

Cone of Light

Beam Dia.	Beam Dia. at 50% of Nadir F.C.	Beam Dia. at 50% of Nadir F.C.	Beam Dia. at 50% of Nadir F.C.
2	708	1.2	1.2
4	188	2.3	2.3
6	81.9	3.4	3.4
8	45.6	4.6	4.6
10	29.7	5.7	5.7
12	20.5	6.8	6.9

BEAM DIA. MEASURED AT 50% OF NADIR F.C.

Coefficients of Utilization - Zonal Cavity Method

Effective Floor Cavity Reflectance 0.20

ROOM CAVITY RATIO	RC	80%				70%				50%				30%				10%				0%
		RW	70%	50%	30%	10%	70%	50%	30%	10%	50%	30%	10%	50%	30%	10%	50%	30%	10%			
0	119	119	119	119	119	116	116	116	116	111	111	111	111	106	106	106	102	102	102	100		
1	114	112	110	108	108	112	110	108	106	106	106	104	103	102	101	100	99	98	97	95		
2	110	106	102	99	99	108	104	101	98	98	98	96	96	98	96	94	95	93	92	90		
3	105	100	96	93	93	104	99	95	92	92	93	90	90	94	91	89	92	89	88	86		
4	101	95	91	87	87	100	94	90	87	87	88	86	86	90	87	85	88	86	84	82		
5	98	91	86	83	83	96	90	86	82	82	85	82	82	87	83	81	85	82	80	79		
6	94	87	82	79	79	93	86	82	79	85	81	78	78	84	80	77	82	79	77	76		
7	91	84	79	75	75	90	83	78	75	82	78	75	75	81	77	74	80	76	74	73		
8	88	80	76	72	72	87	80	75	72	79	75	72	72	78	74	72	77	74	71	70		
9	85	77	73	70	70	84	77	72	69	76	72	69	69	75	72	69	75	71	69	68		
10	82	75	70	67	67	82	74	70	67	74	70	67	67	73	69	67	72	69	66	65		

RC - Ceiling Cavity Reflectance RW - Wall Reflectance

A2-ADJ-LED-1000L-DIM10-MVOLT-WD-40K-90-A2R-F-1227

TEST NO.: EL09121976

INPUT WATTS: **17.0165**

LUMENS: **694**

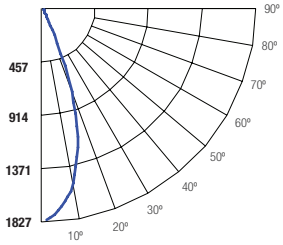
CRI: **90**

EFFICACY: **41**

CCT: **4000K**

SPACING CRITERIA: **0.58**

Candle Power Distribution (Candelas)



Zonal Lumens Summary

Zone	Lumens	%Lamp	%Fixt
0-20	481.52	69.30	69.30
0-30	625.27	90.00	90.00
0-40	649.05	93.50	93.50
0-60	684.56	98.60	98.60
0-80	693.01	99.80	99.80
0-90	693.08	99.80	99.80

Luminance (Average candela/M²)

Angle in Degrees	Average		
	0°	45°	90°
45	12819	12035	11962
55	11637	11781	12139
65	5880	6042	5897
75	2209	2566	2764
85	79	39	79

Lumens Per Zone

Zone	Lumens
0-10	159.18
10-20	322.33
20-30	143.75
30-40	23.78
40-50	19.57
50-60	15.94
60-70	6.64
70-80	1.82
80-90	0.07

Candela Tabulation

Q	
0	1774.79
5	1645.70
15	1007.93
25	144.18
35	29.38
45	26.48
55	19.50
65	7.26
75	1.67
85	0.02
90	0.01

Cone of Light

Beam Dia.	Beam Dia. at 50% of Nadir F.C.	Beam Dia. at 50% of Nadir F.C.	Beam Dia. at 50% of Nadir F.C.
2	614	1.1	1.1
4	163	2.2	2.2
6	71.0	3.3	3.3
8	39.5	4.4	4.4
10	25.8	5.5	5.4
12	17.7	6.6	6.5

BEAM DIA. MEASURED AT 50% OF NADIR F.C.

Coefficients of Utilization - Zonal Cavity Method

Effective Floor Cavity Reflectance 0.20

ROOM CAVITY RATIO	RC	80%				70%				50%				30%				10%				0%
		RW	70%	50%	30%	10%	70%	50%	30%	10%	50%	30%	10%	50%	30%	10%	50%	30%	10%			
0	119	119	119	119	119	116	116	116	116	111	111	111	111	106	106	106	102	102	102	100		
1	114	112	110	108	108	112	110	108	106	106	106	104	103	102	101	100	99	98	97	95		
2	110	106	102	99	99	108	104	101	98	98	98	96	96	98	96	94	95	93	92	90		
3	105	100	96	93	93	104	99	95	92	92	93	90	90	94	91	89	92	89	88	86		
4	101	95	91	87	87	100	94	90	87	87	88	86	86	90	87	85	88	86	84	82		
5	98	91	86	83	83	96	90	86	82	82	85	82	82	87	83	81	85	82	80	79		
6	94	87	82	79	79	93	86	82	78	85	81	78	78	84	80	77	82	79	77	76		
7	91	83	79	75	75	90	83	78	75	82	78	75	75	81	77	74	79	76	74	73		
8	88	80	75	72	72	87	80	75	72	79	75	72	72	78	74	71	77	74	71	70		
9	85	77	73	69	69	84	77	72	69	76	72	69	69	75	71	69	74	71	69	67		
10	82	75	70	67	67	81	74	70	67	73	69	67	67	73	69	66	72	69	66	65		

RC - Ceiling Cavity Reflectance RW - Wall Reflectance

A2-ADJ-LED-1000L-DIM10-MVOLT-WD-40K-90-A2S-F-1227

TEST NO.: EL09121977

INPUT WATTS: **17.0136**

LUMENS: **653**

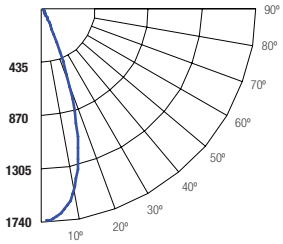
CRI: **90**

EFFICACY: **38**

CCT: **4000K**

SPACING CRITERIA: **0.58**

Candle Power Distribution (Candelas)



Zonal Lumens Summary

Zone	Lumens	%Lamp	%Fixt
0-20	460.67	70.50	70.50
0-30	590.36	90.40	90.40
0-40	612.22	93.70	93.70
0-60	641.83	98.30	98.20
0-80	652.13	99.80	99.80
0-90	652.19	99.80	99.80

Luminance (Average candela/M²)

Angle in Degrees	Average		
	0°	45°	90°
45	9808	10447	9929
55	8152	9065	8803
65	6002	6302	6820
75	2024	2592	3254
85	39	39	39

Lumens Per Zone

Zone	Lumens
0-10	155.06
10-20	305.61
20-30	129.69
30-40	21.86
40-50	16.26
50-60	13.35
60-70	7.92
70-80	2.38
80-90	0.06

Candela Tabulation

Q	
0	1728.85
5	1643.64
15	962.48
25	146.08
35	26.01
45	20.26
55	13.66
65	7.41
75	1.53
85	0.01
90	0.01

Cone of Light

Beam Dia.	Beam Dia. at 50% of Nadir F.C.	Beam Dia. at 50% of Nadir F.C.	Beam Dia. at 50% of Nadir F.C.
2	598	1.1	1.1
4	159	2.1	2.1
6	69.2	3.2	3.2
8	38.5	4.2	4.2
10	25.1	5.3	5.4
12	17.3	6.3	6.5

BEAM DIA. MEASURED AT 50% OF NADIR F.C.

Coefficients of Utilization - Zonal Cavity Method

Effective Floor Cavity Reflectance 0.20

ROOM CAVITY RATIO	RC	80%				70%				50%				30%				10%				0%
		RW	70%	50%	30%	10%	70%	50%	30%	10%	50%	30%	10%	50%	30%	10%	50%	30%	10%			
0	119	119	119	119	119	116	116	116	116	111	111	111	111	106	106	106	102	102	102	100		
1	114	112	110	108	108	112	110	108	106	106	106	104	103	102	101	100	99	98	97	95		
2	110	106	102	99																		