

FOR NEW CONSTRUCTION NON-IC MOUNTING TRAY

Die-formed aluminum and galvanized steel for maximum heat dissipation and rust protection. New Construction NON-IC housing designed for new construction installations and suitable for use in non-insulation covered ceilings. Housing is NON-IC rated and insulation must be pulled 3" from housing. May be installed in 2" x 8" joist construction.

COLLAR BRACKET

Please consult factory for custom or thicker ceiling applications. Integral laser beam slots allow the use of guide strings or leveling laser guns to ensure that all luminaries are installed in an level and straight plane.

MOUNTING

Preinstalled bar hangers allow housing to be positioned and locked at any point within a 24" joist span. They can be positioned on either the long or short axis of the housing and can be shortened for 12" joists. They contain a double-headed real nail for secure attachment into the joist. Bar hanger nails are installed on a 20° downward angle for better contact, and the 90° pivoting mounting plate makes installation fast and accurate. Bar hangers can fit onto T-Bar spline with additional slots and holes for special mounting methods if necessary. Butterfly brackets are also provided and are constructed from 18-gauge steel and can be adjusted vertically. Butterfly brackets may be installed with 3/4" or 1-1/2" lathing channel, 1/2" EMT, or optional C-Channel mounting bars are available.

LABELS

c-UL-us listed for damp location
c-UL-us listed for feed through wiring

WARRANTY

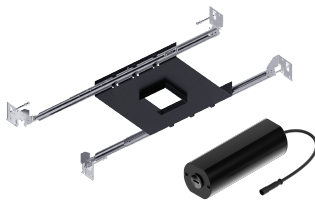
A1R-LED luminaries are covered by Elite's 5 year limited warranty. As a system, we stand behind our entire products from housing to bar hangers.

| | |
|---------|---|
| LUMENS | 800 - A1R-LED-10W 1000 - A1R-LED-15W |
| DIMMING | DIM10 (0-10V dimming), DIMTR (Triac) - only 120V |
| VOLTAGE | 120V, MVOLT |

| NOMINAL LUMENS | DELIVERED LUMENS | WATTAGE |
|----------------|------------------|---------|
| 800 | 861 | 10W |
| 1000 | 1007 | 14W |

Based on 3000K, 90+ CRI. Actual wattage may vary +/- 5%

Example: A1S-LED-10W-DIM10-MVOLT-BP30



| | | | |
|---|--|-----------------------------------|-----------------|
| | | | BP30 |
| POWER PACK | DIMMING | VOLTAGE | MOUNTING |
| A1S-LED-10W - For 800 Lumens A1S-LED-15W - For 1000 Lumens | DIM10 - 0-10V DIMTR - Triac (120V only) | 120 MVOLT DIMTR - only 120V | BP30 |



TRIM OPTIONS



A1S-F-1102-LED -
1" Square Flanged LED
Adjustable and Fixed
Downlight

Example: A1S-F-1102-LED-800L-MD-30K-90-CL-WH

| SERIES | PERFORMANCE | DISTRIBUTION | CCT | CRI | REFLECTOR/TRIM |
|---|--|--------------------|--|--------------------|--|
| A1S-F-1102-LED | 800L - 800 lumens 1000L - 1000 lumens | MD - Medium | 27K - 2700K 30K - 3000K 35K - 3500K 40K - 4000K 50K - 5000K *50K - 85CRI | 90 - 90 CRI | CL-WH - Chrome/White W-WH - White/White |
| 800L - only 10W new construction and remodel housing 1000L - only 15W new construction and remodel housing | | | | | |



A1S-TL-1102-LED -
1" Square Trimless LED
Adjustable and Fixed
Downlight

Example: A1S-TL-1102-LED-800L-MD-30K-90-CL-WH

| SERIES | PERFORMANCE | DISTRIBUTION | CCT | CRI | FINISH |
|---|--|--------------------|--|--------------------|---|
| A1S-TL-1102-LED | 800L - 800 lumens 1000L - 1000 lumens | MD - Medium | 27K - 2700K 30K - 3000K 35K - 3500K 40K - 4000K 50K - 5000K *50K - 85CRI | 90 - 90 CRI | CL - Chrome WH - White |
| 800L - only 10W new construction and remodel housing 1000L - only 15W new construction and remodel housing | | | | | |