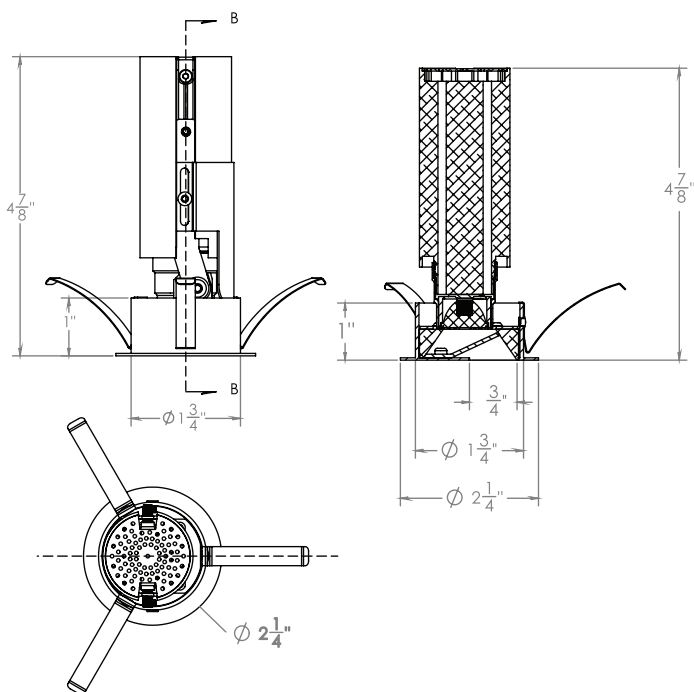
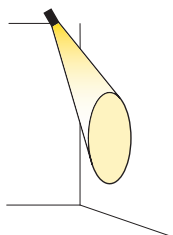




35° Tilt



SERIES	DELIVERED LUMENS	WATTAGE
800	397	10 W

Based on 3000K, 90+ CRI. Actual wattage may vary +/- 5%

#### VERTICAL ADJUSTMENT

Slide upper module up and down to achieve exact desired beam angle from narrow to wide distribution. Alternatively, an Allen wrench is provided with the fixture, which decreases the height of the upper module for a wider distribution. Twisting the captive screws counterclockwise increases the height of the upper module for a narrower distribution.

#### TOOL-LESS HOT AIMING

Manually adjust module to achieve up to a 35-degree tilt, giving you freedom to aim light precisely. Module can be locked securely into place on reaching desired position.

#### SHIELDING

Once tilt, rotation, and beam angle are adjusted and locked in place, shielding of the LEDs can be adjusted to prevent light loss and enhance directional aiming.

#### WALL WASH

A deeply regressed light source and a wall wash eyelid trim provide even illumination that decreases glare at the ceiling line. Wall wash distribution highlights shelves, displays, or artwork on the wall and gives the appearance of an enlarged room.

LUMENS	800 Series
CCT	27K, 30K, 35K, 40K, 50K
CRI	90
COLOR QUALITY	2 Step MacAdam Ellipse
OPTIC	MD (Medium)
FINISH	Chrome, White
DIMMING	DIM10 (0-10V dimming), DIMTR ( Triac - 120V only)
SHAPE	Round (Flanged, Trim-less)
PHOTOMETRIC TESTS	In Accordance with IES LM79 and LM80

## TRIM OPTIONS



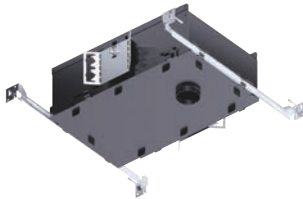
**A1R-F-1163-LED** -  
1" Round LED Adjustable and  
Fixed Downlight

Example: **A1R-F-1163-LED-800L-MD-30K-90-CL-WH**

A1R-F-1163-LED					
SERIES	PERFORMANCE	DISTRIBUTION	CCT	CRI	REFLECTOR/TRIM
A1R-F-1163-LED	800L	MD - Medium	27K - 2700K 30K - 3000K 35K - 3500K 40K - 4000K 50K - 5000K *50K - 85CRI	90 - 90 CRI	CL-WH - Chrome/White W-WH - White/White

## HOUSING OPTIONS ( Select only one )

### IC NEW CONSTRUCTION



Example: **A1R-LED-IC-10W-DIM10-MVOLT-AT**

			AT
POWER PACK	DIMMING	VOLTAGE	AIR-SHUT
A1R-LED-IC-10W - For 800L Lumens	DIM10 DIMTR - Triac (120V only)	120 MVOLT DIMTR - only 120V	AT

### NON-IC NEW CONSTRUCTION



Example: **A1R-LED-10W-DIM10-MVOLT-BP30**

			BP30
POWER PACK	DIMMING	VOLTAGE	MOUNTING
A1R-LED-10W - For 800 Lumens	DIM10 - 0-10V DIMTR - Triac (120V only)	120 MVOLT DIMTR - only 120V	BP30

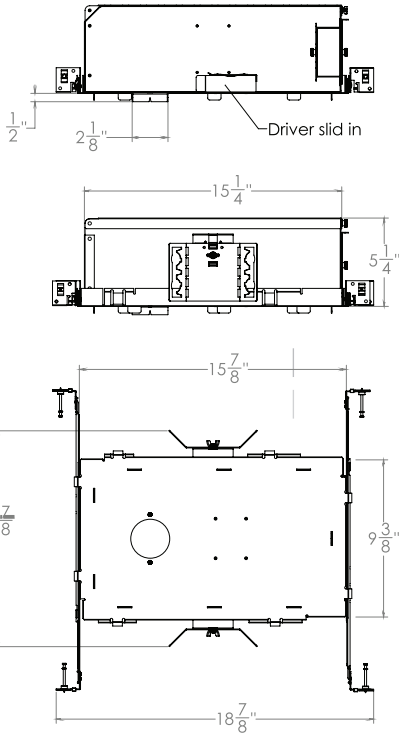
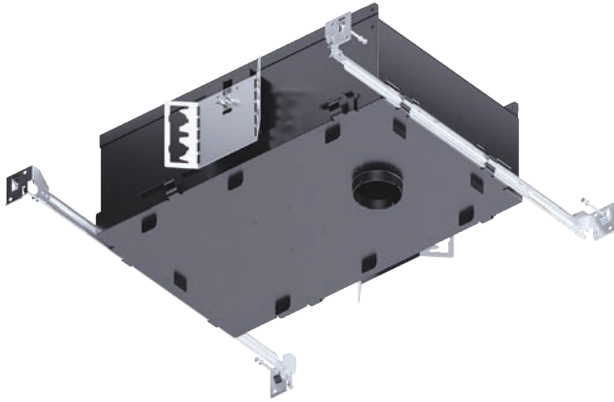
### REMODEL



Example: **A1-LED-R-10W-DIM10-MVOLT**

POWER PACK	DIMMING	VOLTAGE
A1-LED-R-10W - For 800 Lumens	DIM10 - 0-10V DIMTR - Triac (120V only)	120 MVOLT DIMTR - only 120V

\*Remodel : When installed in hard lid ceilings.



SERIES	DELIVERED LUMENS	WATTAGE
800	397	10 W

Based on 3000K, 90+ CRI. Actual wattage may vary +/- 5%

#### IC HOUSING

Thermally protected, specification grade adjustable recessed housing. For new construction insulated ceilings where housing will be in direct contact with insulation. Die-cast aluminum construction, matte lac painted for maximum heat dissipation, rust protection and glare free illumination.

#### ELECTRICAL/TRANSFORMER

Access to junction box and driver can be accessed from below the ceiling and above the ceiling. Junction box is listed or through ranch circuit wiring. 2 90° C supply conductors and has our 12" Ksone 34" K and our Romenocouts with true prout slots and strain clamps.

#### DIMMING & DRIVER INFORMATION

DIM10 - 0-10V dimming on either MVOLT 120V. Dimmable down to 5% of initial lumens, standard.

DIMTR - Triac & Electronic low voltage dimming. Available in 120V only.

#### ACCESSIBLE DRIVER

Driver is connected to wire, which is attached to body of luminaire. Driver is housed within the housing, and can be accessed from below the ceiling by a simple pull-down mechanism.

#### MOUNTING

Pre-installed bar hangers allow housing to be positioned and locked at any point within a 24" joist span. They can be positioned on either the long or short axis of the housing and can be shortened for 12" joists. A double-headed real nail attaches housing securely into the joist. Bar hanger nails are installed on a 20° downward angle for better contact, and the 90° pivoting mounting plate makes installation fast and accurate. Bar hangers can fit onto T-Bar spline with additional slots and holes for special mounting methods if necessary. 18-gauge steel butterfly brackets can be adjusted vertically. Butterfly brackets may be installed with 3/4" or 1-1/2" lathing channel, 1/2" EMT, or optional C-Channel mounting bars are available.

#### LABELS

c-us listed or damp location  
c-us listed or feed through wiring  
c-us listed or direct contact with insulation

#### WARRANTY

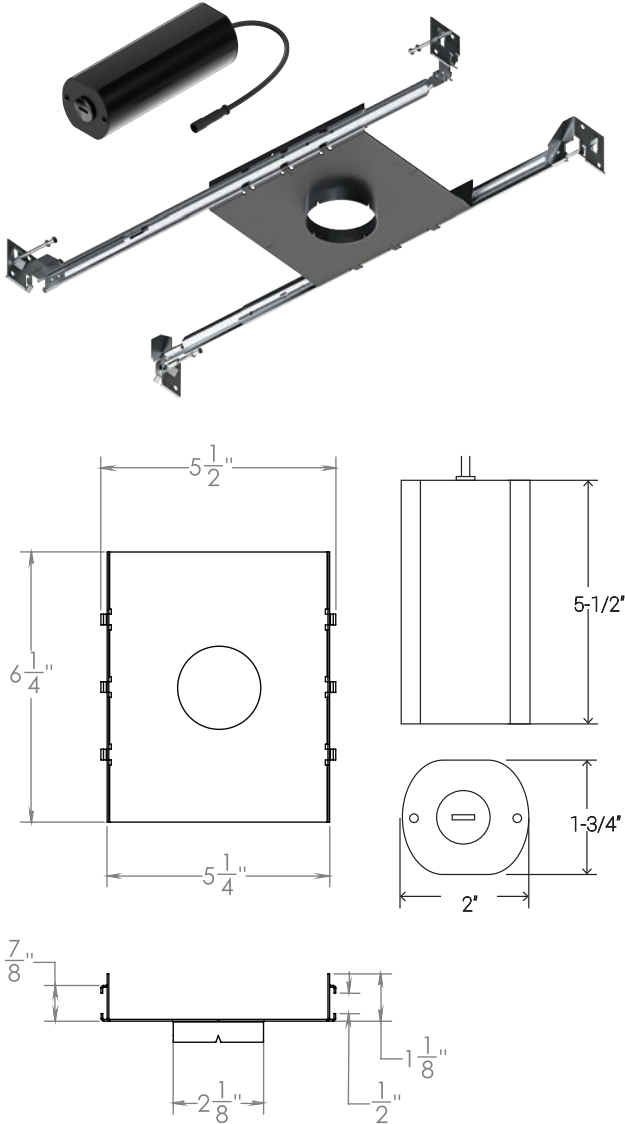
5-year limited warranty for parts and components (labor not included).

LUMENS	800 - <b>A1R-LED-IC-10W</b>
DIMMING	DIM10 (0-10V dimming), DIMTR (Triac-120V only)
VOLTAGE	120V, MVOLT

#### Example: A1R-LED-IC-10W-DIM10-MVOLT-AT

			<b>AT</b>
<b>POWER PACK</b>	<b>DIMMING</b>	<b>VOLTAGE</b>	<b>AIR-SHUT</b>
A1R-LED-IC-10W- For 800L Lumens	DIM10 DIMTR - Triac (120V only)	120 MVOLT DIMTR - only 120V	AT





### FOR NEW CONSTRUCTION NON-IC MOUNTING TRAY

Die-formed aluminum and galvanized steel for maximum heat dissipation and rust protection. New Construction NON-IC housing designed for new construction installations and suitable for use in non-insulation covered ceilings. Housing is NON-IC rated and insulation must be pulled 3" from housing. May be installed in 2" x 8" joist construction.

### COLLAR BRACKET

Please consult factory for custom or thicker ceiling applications. Integral laser beam slots allow the use of guide strings or leveling laser guns to ensure that all luminaries are installed in an level and straight plane.

### MOUNTING

Preinstalled bar hangers allow housing to be positioned and locked at any point within a 24" joist span. They can be positioned on either the long or short axis of the housing and can be shortened for 12" joists. They contain a double-headed real nail for secure attachment into the joist. Bar hanger nails are installed on a 20° downward angle for better contact, and the 90° pivoting mounting plate makes installation fast and accurate. Bar hangers can fit onto T-Bar spline with additional slots and holes for special mounting methods if necessary. Butterfly brackets are also provided and are constructed from 18-gauge steel and can be adjusted vertically. Butterfly brackets may be installed with 3/4" or 1-1/2" lathing channel, 1/2" EMT, or optional C-Channel mounting bars are available.

### LABELS

c-UL-us listed for damp location  
c-UL-us listed for feed through wiring

### WARRANTY

A1R-LED luminaries are covered by Elite's 5 year limited warranty. As a system, we stand behind our entire products from housing to bar hangers.

LUMENS	800 - <b>A1R-LED-10W</b>
DIMMING	DIM10 (0-10V dimming), DIMTR ( Triac ) - only 120V
VOLTAGE	120V, MVOLT

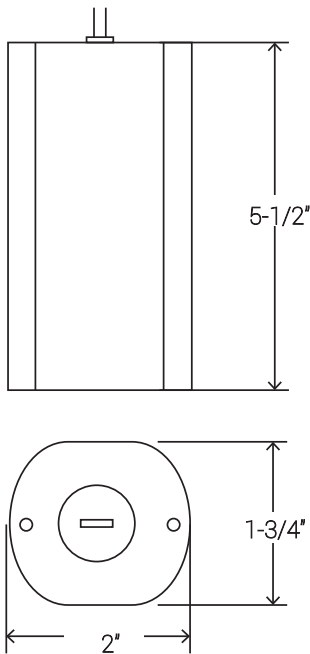
SERIES	DELIVERED LUMENS	WATTAGE
800	397	10 W

Based on 3000K, 90+ CRI. Actual wattage may vary +/- 5%

### Example: A1R-LED-10W-DIM10-MVOLT-BP30

			<b>BP30</b>
<b>POWER PACK</b>	<b>DIMMING</b>	<b>VOLTAGE</b>	<b>MOUNTING</b>
A1R-LED-10W - For 800 Lumens	DIM10 - 0-10V DIMTR - Triac (120V only)	120 MVOLT DIMTR - only 120V	BP30





NOMINAL LUMENS	DELIVERED LUMENS	WATTAGE
800	766	10W

Based on 3000K, 90+ CRI. Actual wattage may vary +/- 5%

#### FOR REMODEL NON-IC MOUNTING

Small aperture thermally protected remodel housing. For fast, easy installation from below the ceiling in existing plaster or mechanical ceilings. Three remodel clips can be accessed from below the ceiling to remove fixture and access the driver.

**INSTALLATION:** Three pre-installed spring clips secure the housing firmly into ceiling, accommodating different ceiling thicknesses from 1/2" to 1-1/4".

#### DIMMING & DRIVER INFORMATION

DIM10 - 0-10V dimming on either MVOLT 120V. Dimmable down to 5% of initial lumens, standard.

DIMTR - Triac & Electronic low voltage dimming. Available in 120V only.

#### LABELS

c-us listed or damp location  
c-us listed or feed through wiring

#### WARRANTY

5-year limited warranty for parts and components (labor not included).

LUMENS	800 - <b>A1-LED-R-10W</b>
DIMMING	DIM10 (0-10V dimming), DIMTR (Triac-120V only)
VOLTAGE	120V, MVOLT

#### Example: A1-LED-R-10W-DIM10-MVOLT

<b>POWER PACK</b>	<b>DIMMING</b>	<b>VOLTAGE</b>
A1-LED-R-10W - For 800 Lumens	DIM10 - 0-10V DIMTR - Triac (120V only)	120 MVOLT
		DIMTR - only 120V



**A1R-F-1163-LED-800L-DIM10-120-MD-30K-90-CL**

**TEST NO.: EL05082055**

**INPUT WATTS: 10.5**

**LUMENS: 397**

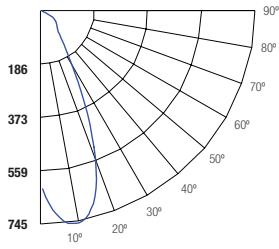
**CRI: 90**

**EFFICACY: 38**

**CCT: 3000K**

**SPACING CRITERIA: 0.68**

**Candle Power Distribution (Candelas)**



**Zonal Lumens Summary**

Zone	Lumens	%Lamp	%Fixt
0-20	177.97	44.8	44.9
0-30	275.94	69.5	69.5
0-40	326.24	82.2	82.2
0-60	384.73	97	97
0-80	394.74	99.5	99.5
0-90	394.79	99.5	99.5

**Luminance (Average candela/M<sup>2</sup>)**

Angle in Degrees	Average 0°	Average 45°	Average 90°
45	33281	23454	14615
55	30956	19238	10199
65	21197	12421	5637
75	53	106	159
85	79	196	314

**Lumens Per Zone**

Zone	Lumens
0-10	55.52
10-20	122.45
20-30	97.96
30-40	50.31
40-50	33.36
50-60	25.13
60-70	9.31
70-80	0.71
80-90	0.04

**Candela Tabulation**

Q	
0	617.16
5	708.01
15	655.05
25	334.68
35	115.19
45	68.75
55	51.87
65	26.17
75	0.04
85	0.02
90	0.02

**Coefficients of Utilization - Zonal Cavity Method**

Effective Floor Cavity Reflectance 0.20

Cone of Light			
2	214	1.0	1.2
3	56.7	2.0	2.4
5	24.7	3.1	3.6
7	13.7	4.1	4.8
8	8.96	5.1	6.0
10	6.17	6.2	7.2
(FT) Distance to Plane	(FC) Initial Footcandle at Nadir	(FT) Beam Vert. Spread	(FT) Beam Horiz. Spread

BEAM DIA. MEASURED AT 50% OF NADIR F.C.

ROOM CAVITY RATIO	RC				80%				70%				50%				30%				10%				0%			
	RW	70%	50%	30%	10%	70%	50%	30%	10%	50%	30%	10%	50%	30%	10%	50%	30%	10%	50%	30%	10%	50%	30%	10%	50%	30%	10%	0%
0		119	119	119	119	116	116	116	116	111	111	111	106	106	106	102	102	102	102	102	102	102	102	102	99			
1		113	110	108	105	111	108	106	104	104	102	100	100	99	97	97	95	94	92	92	92	92	92	92	92			
2		107	102	98	94	105	100	96	93	97	94	91	94	91	89	91	89	87	85	85	85	85	85	85	85			
3		101	95	90	85	99	93	89	85	91	87	83	88	85	82	86	83	81	79	79	79	79	79	79	79			
4		96	88	83	78	94	87	82	78	85	80	77	83	79	76	81	78	75	73	73	73	73	73	73	73			
5		91	83	77	72	90	82	76	72	80	75	71	78	74	71	76	73	70	68	68	68	68	68	68	68			
6		87	78	72	67	85	77	71	67	75	70	66	74	69	66	72	69	65	64	64	64	64	64	64	64			
7		83	73	67	63	81	73	67	63	71	66	62	70	65	62	69	65	62	60	60	60	60	60	60	60			
8		79	69	63	59	78	69	63	59	67	62	59	66	62	58	65	61	58	57	57	57	57	57	57	57			
9		75	66	60	56	74	65	59	56	64	59	55	63	59	55	62	58	55	54	54	54	54	54	54	54			
10		72	62	57	53	71	62	56	53	61	56	53	60	56	52	60	55	52	51	51	51	51	51	51	51			

RC - Ceiling Cavity Reflectance

RW - Wall Reflectance