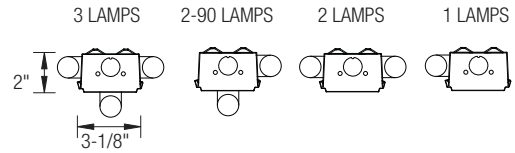
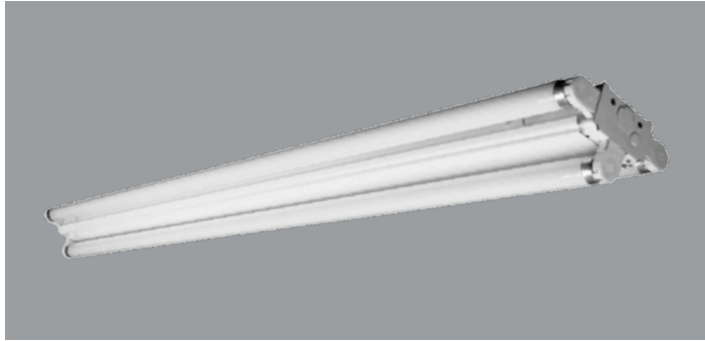


T8/ T5 - FLUORESCENT SIDEMOUNT STYLE STRIP (2, 4 OR 6 LAMP)



GENERAL DESCRIPTION:

An all-purpose economy fluorescent 1-light sidemount strip that can be adapted to be a double sidemount, right angle or 3-light strip.

PRODUCT FEATURES:

- Heavy-duty 20-gauge steel utilized throughout for durability and code compliance
- Pretreated with five-stage iron phosphate process to ensure superior paint adhesion
- Painted high-gloss baked white enamel
- Shallow design is ideal for commercial and industrial spaces where fixture depth is critical
- Suitable for dry and damp environments
- Thermally protected, self-resetting, Class P, NPF, non-PCB and UL listed ballast
- Snap-on ballast cover allows for easy maintenance and install
- End plates act as a coupler for continuous row mounting
- Knockouts included for conduit and chain hangers
- Suitable for surface or suspended mounting
- Individual or continuous row mounting
- Lightweight design enables for quick, easy installation and increases worker productivity

- CEE qualified ballast comes standard on most fixture options (Consult factory for details)
- NEC required ballast disconnect is standard

LISTING

UL/C-UL listed to US and Canadian standard

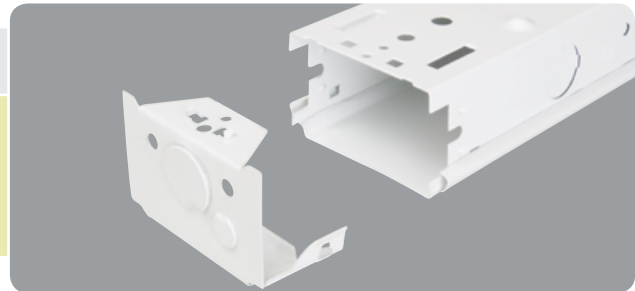
WARRANTY

Guaranteed for one year against mechanical defects

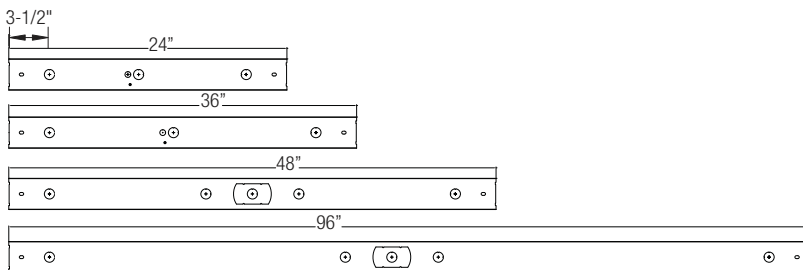
T8/T5
OCS

BODY SCHEMATIC FEATURES

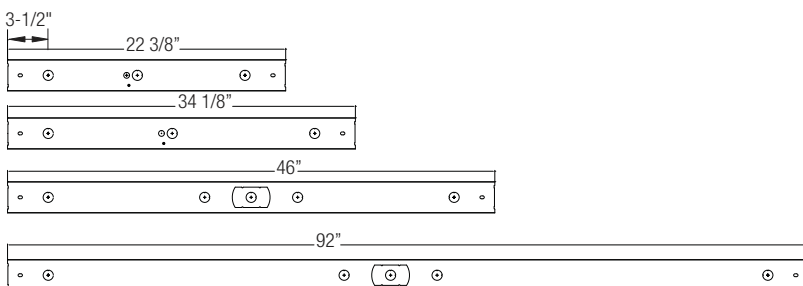
- Pivot style end cap
- KO for V hook hanger
- KO for conduit



Strip Back Plans T8



Strip Back Plans T5



8' Fluorescent Sidemount Style Strip

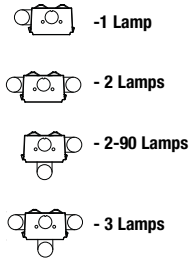
Ordering Information > Example: 8-OCS-2-28-T5-MVOLT-EMG-T8-BX-700

8	OCS						
FIXTURE SIZE 8- 8'	SERIES OCS- Oracle Sidemount Strip			VOLTAGE (Blank)- MVOLT (120/277) 120 277 347	# OF BALLAST (Blank)- 1 Ballast 2 - 2 Ballasts	BALLAST FACTOR (Blank)- Normal BF HBF - High BF LBF - Low BF	

WATTAGE	
8' TANDEM FIXTURE 2-32-T8 (2 lamps/32W/T8) 4-32-T8 (4-lamps/32W/T8) 6-32-T8 (6-lamps/32W/T8)	8' TANDEM FIXTURE 2-28-T5 (2 lamps/28W/T5) 2-54-T5HO (2 lamps/54W/T5HO) 4-28-T5 (4-lamps/28W/T5) 4-54-T5HO (4-lamps/54W/T5HO) 6-28-T5 (6-lamps/28W/T5) 6-54-T5HO (6-lamps/54W/T5HO)

EMERGENCY BATTERY PACK OPTIONS (L. = LUMENS)	
ORDER CODE	DESCRIPTION
EMG-T8-BX-450	Up to 450 L. for T8 or BX
EMG-T8-BX-600	Up to 600 L. for T8 or BX
EMG-T8-BX-700	Up to 700 L. for T8 or BX
EMG-T8-BX-1400	Up to 1400 L. for T8 or BX
EMG-T5-520	Up to 520 L. for T5
EMG-T5-T5HO-700	Up to 700 L. for T5 or T5HO
EMG-T5-T5HO-1300	Up to 1300 L. for T5 or T5HO
EMG-SD-T8-BX-T5-T5HO-1400	Self-Diagnostic 1400 L. for T8 , BX , T5 or T5HO
EMG-ICE-T8-BX-T5-T5HO-1400	ICE Pack 1400 L. for T8 , BX , T5 or T5HO
GTD	Generator Transfer Device

SOCKET POSITIONING



WIRING OPTIONS

C3	- 6' 3-wire Flex Cable (Single Circuit)
C4	- 6' 4-wire Flex Cable (Double Circuit)
FBF	- Internal Fast Blow Fuse
SBF	- Internal Slow-Blow Fuse
RIS	- Radio Interference Suppressor

OTHER OPTIONS

OCMS	- Motion Sensor
OCVH	- V Hook and Chain Kit
OCGSS	- Cable Gripper Suspension Kit
USA	- Made in America Compliance

BALLAST CONFIGURATION & CODE

32W/T8	28W/T5	54W/T5HO	DESCRIPTION
(Blank) ³	-	-	Electronic Instant Start
EPS ³	(Blank) ^{1,2}	(Blank) ³	Electronic Program Start

1- Requires 2 Ballasts for 3 or 4-lamps.

2- Requires 3 Ballasts for 6-lamps.

3- Requires 2 Ballasts for 6-lamps.

For dimming ballast Consult Factory