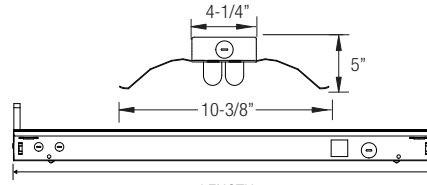


### T8 FLUORESCENT INDUSTRIAL STRIP W/ REFLECTOR (1, 2 OR 4 LAMP)



LENGTH  
2' = 24"  
3' = 36"  
4' = 48"  
8' = 96"



#### PRODUCT FEATURES:

- Heavy-duty 20-gauge steel utilized throughout for durability and code compliance
- Powder-coated painted for maximum operating life
- Pretreated with five-stage iron phosphate process to ensure superior paint adhesion
- Painted high-gloss baked white enamel
- Suitable for dry and damp environments
- Thermally protected, self-resetting, Class P, NPF, non-PCB and UL listed ballast
- Suitable for surface and/or suspended mounting
- Individual or continuous row mounting
- Standard reflector is manufactured in high reflectance white
- Reflector is secured to housing with 1/4 turn fasteners (ships separately)
- Reflector options:
  - Aluminium high reflectance white paint/slotted (20% uplight)
  - Aluminium specular silver/slotted (20% uplight)
  - Aluminium white asymmetrical reflector
  - Aluminium specular silver/asymmetrical reflector

- NEC required ballast disconnect is standard
- CEE qualified ballast comes standard on most fixture options (Consult factory for details)

#### LISTING

UL/C-UL listed to US and Canadian standard

#### WARRANTY

Guaranteed for one year against mechanical defects

**NOTE: All Aluminium Reflectors are special order (check with factory)**

T8  
OCR

#### Ordering Information > Example: 8-OCR-2-32-T8-MVOLT-EMG-T8-BX-700

8	OCR								
---	-----	--	--	--	--	--	--	--	--

FIXTURE SIZE	SERIES	WATTAGE	VOLTAGE <sup>2</sup>	# OF BALLAST	BALLAST FACTOR	REFLECTOR OPTIONS
8- 8'	OCR Oracle Industrial Series with Reflector	<b>8' FIXTURE</b> 1-59-T8 (1 lamp/59W/T8) 2-59-T8 (2 lamps/59W/T8) <b>8' TANDEM FIXTURE</b> 2-32-T8 (2 lamps/32W/T8) 4-32-T8 (4-lamps/32W/T8)	(Blank)- MVOLT (120/277) 120 277 347	(Blank)- 1 Ballast 2- 2 Ballasts	(Blank)- Normal BF HBF- High BF LBF- Low BF	Refer to next page

REMOTE EMERGENCY BATTERY PACK OPTIONS (L. = LUMENS)	
ORDER CODE	DESCRIPTION
EMG-T8-BX-450	Up to 450 L. for T8 or BX
EMG-T8-BX-600	Up to 600 L. for T8 or BX
EMG-T8-BX-700	Up to 700 L. for T8 or BX
EMG-T8-BX-1400	Up to 1400 L. for T8 or BX
EMG-T8-BX-T5-T5HO-3200	Up to 3200 L. for T8, BX, T5 or T5HO
EMG-SD-T8-BX-T5-T5HO-1400	Self-Diagnostic 1400 L. for T8, BX, T5 or T5HO
EMG-ICE-T8-BX-T5-T5HO-1400	ICE Pack 1400 L. for T8, BX, T5 or T5HO
GTD	Generator Transfer Device

BALLAST CONFIGURATION & CODE		
32W/T8	59W/T8	DESCRIPTION
(Blank)	(Blank)	Electronic Instant Start
EPS	-	Electronic Program Start
ADV-7	-	Advance Mark-7 <sup>1</sup>
ADV-10	-	Advance Mark-10 <sup>1</sup>
-	-	Advance Optanium <sup>1</sup>
ADV-ESS	-	Advance Essential <sup>1</sup>
ADV-ROVR	-	Advance Rover <sup>1</sup>
LUT-EHD	-	Lutron Ecosystem H-Series <sup>1</sup>
LUT-2W	-	Lutron Tu-Wire <sup>1</sup>
LUT-EC5	-	Lutron Ecosystem <sup>1</sup>
LUT-EC3	-	Lutron Eco-10 <sup>1</sup>
LUT-TVE	-	Lutron Tve <sup>1</sup>
LUT-H3D	-	Lutron Hi-Lume 3D <sup>1</sup>
-	-	Lutron Ecosystem (347V Only) <sup>1</sup>

1- Voltage must be specified for dimming ballast.  
2- Voltage must be specified for dimming ballast.

WIRING OPTIONS	
C3	- 6' 3-wire Flex Cable (Single Circuit)
C4	- 6' 4-wire Flex Cable (Double Circuit)
FBF	- Internal Fast Blow Fuse
SBF	- Internal Slow-Blow Fuse
RIS	- Radio Interference Suppressor

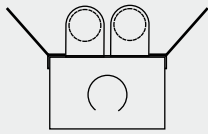
OTHER OPTIONS	
OCRWG1	- Wireguard (Only available with SYM reflectors)
OCNRMS	- Motion Sensor
OCNRVH	- V Hook and Chain Kit
OCNRGSS	- Cable Gripper Suspension Kit
USA	- Made in America Compliance

8' Fluorescent Industrial Strip

# ACCESSORIES SECTION

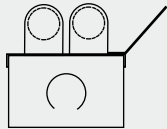
## WHITE/ SILVER REFLECTOR GUIDE FOR OCR

### WHITE REFLECTOR FOR OCR-2 LAMP



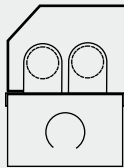
#### SYMMETRICAL

2-OCR-2-SYM-WH  
3-OCR-2-SYM-WH  
4-OCR-2-SYM-WH  
8-OCR-2-SYM-WH



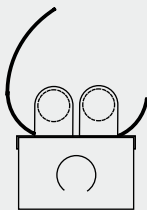
#### ASYMMETRICAL

2-OCR-2-ASY-WH  
3-OCR-2-ASY-WH  
4-OCR-2-ASY-WH  
8-OCR-2-ASY-WH



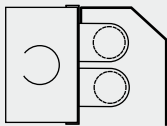
#### INSIDE ASYMMETRICAL

2-OCR-2-IAS-WH  
3-OCR-2-IAS-WH  
4-OCR-2-IAS-WH  
8-OCR-2-IAS-WH



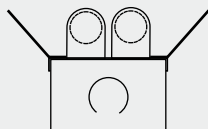
#### ELLIPTICAL

2-OCR-2-ELR-WH  
3-OCR-2-ELR-WH  
4-OCR-2-ELR-WH  
8-OCR-2-ELR-WH



#### DOWNLIGHT

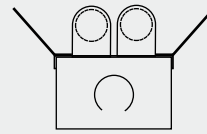
2-OCR-2-DLRL-WH  
3-OCR-2-DLRL-WH  
4-OCR-2-DLRL-WH  
8-OCR-2-DLRL-WH



#### UPLIGHT SYMMETRICAL

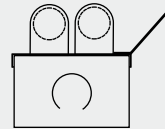
2-OCR-2-SYM-UPL-WH  
3-OCR-2-SYM-UPL-WH  
4-OCR-2-SYM-UPL-WH  
8-OCR-2-SYM-UPL-WH

### SILVER REFLECTOR FOR OCR-2 LAMP



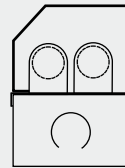
#### SYMMETRICAL

2-OCR-2-SYM-SR  
3-OCR-2-SYM-SR  
4-OCR-2-SYM-SR  
8-OCR-2-SYM-SR



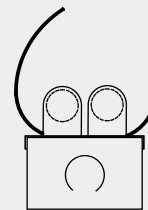
#### ASYMMETRICAL

2-OCR-2-ASY-SR  
3-OCR-2-ASY-SR  
4-OCR-2-ASY-SR  
8-OCR-2-ASY-SR



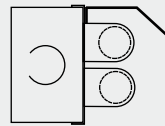
#### INSIDE ASYMMETRICAL

2-OCR-2-IAS-SR  
3-OCR-2-IAS-SR  
4-OCR-2-IAS-SR  
8-OCR-2-IAS-SR



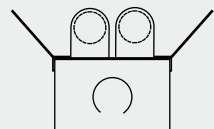
#### ELLIPTICAL

2-OCR-2-ELR-SR  
3-OCR-2-ELR-SR  
4-OCR-2-ELR-SR  
8-OCR-2-ELR-SR



#### DOWNLIGHT

2-OCR-2-DLRL-SR  
3-OCR-2-DLRL-SR  
4-OCR-2-DLRL-SR  
8-OCR-2-DLRL-SR



#### UPLIGHT SYMMETRICAL

2-OCR-2-SYM-UPL-SR  
3-OCR-2-SYM-UPL-SR  
4-OCR-2-SYM-UPL-SR  
8-OCR-2-SYM-UPL-SR

T8/T5

OCR

Accessories - Reflector Guide

#### REFLECTOR FINISH

Reflectors are manufactured in Aluminium high reflectance specular Silver & White finishes. Custom colors or finishes are available upon request.

:: WH (High Efficient White Reflector)

:: SR (High Efficient Silver Reflector)

#### REFLECTOR MOUNTING

Reflectors mount onto existing ballast covers.