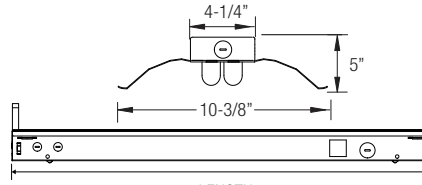


T5 FLUORESCENT INDUSTRIAL STRIP W/ REFLECTOR (4 LAMP)



LENGTH
2' = 24"
3' = 36"
4' = 48"
8' = 96"



PRODUCT FEATURES:

- Heavy-duty 20-gauge steel utilized throughout for durability and code compliance
- Powder-coated painted for maximum operating life
- Pretreated with five-stage iron phosphate process to ensure superior paint adhesion
- Painted high-gloss baked white enamel
- Suitable for dry and damp environments
- Thermally protected, self-resetting, Class P, NPF, non-PCB and UL listed ballast
- Suitable for surface and/or suspended mounting
- Individual or continuous row mounting
- Standard reflector is manufactured in high reflectance white
- Reflector is secured to housing with 1/4 turn fasteners (ships separately)
- Reflector options:
 - Aluminium high reflectance white paint/slotted (20% uplight)
 - Aluminium specular silver/slotted (20% uplight)
 - Aluminium white asymmetrical reflector
 - Aluminium specular silver/asymmetrical reflector

- NEC required ballast disconnect is standard
- CEE qualified ballast comes standard on most fixture options (Consult factory for details)

LISTING

UL/C-UL listed to US and Canadian standard

WARRANTY

Guaranteed for one year against mechanical defects

NOTE: All Aluminium Reflectors are special order (check with factory)

T5
OCR

Ordering Information > Example: 8-OCR-4-28-T5-MVOLT-EMG-T5-T5HO-700

8	OCR								
---	-----	--	--	--	--	--	--	--	--

FIXTURE SIZE	SERIES	WATTAGE	VOLTAGE ²	# OF BALLAST	BALLAST FACTOR	REFLECTOR OPTIONS
8- 8'	OCR Oracle Industrial Series with Reflector	8' TANDEM FIXTURE 4-28-T5 (4-lamps/28W/T5) 4-54-T5HO (4-lamps/54W/T5HO)	(Blank)- MVOLT (120/277) 120 277 347	(Blank)- 1 Ballast 2- 2 Ballasts	(Blank)- Normal BF HBF- High BF LBF- Low BF	Refer to next page

BALLAST CONFIGURATION & CODE		
28W/T5	54W/T5HO	DESCRIPTION
-	-	Electronic Instant Start
(Blank) ¹	(Blank)	Electronic Program Start
-	ADV-7 ¹	Advance Mark-7 ²
-	ADV-10 ¹	Advance Mark-10 ²
ADV-OPT	-	Advance Optanium ²
-	-	Advance Essential ²
-	ADV-ROVR ¹	Advance Rover ²
LUT-EHD ¹	LUT-EHD ¹	Lutron Ecosystem H-Series ²
-	-	Lutron Tu-Wire ²
LUT-EC5 ¹	-	Lutron Ecosystem ²
LUT-EC3 ¹	LUT-EC3 ¹	Lutron Eco-10 ²
-	-	Lutron Tve ²
LUT-H3D ¹	LUT-H3D ¹	Lutron Hi-Lume 3D ²
-	LUT-ECD ¹	Lutron Ecosystem (347V Only) ²

1- Requires 2 Ballasts for 4-lamps.
2- Voltage must be specified for dimming ballast.

REMOTE EMERGENCY BATTERY PACK OPTIONS (L. = LUMENS)

ORDER CODE	DESCRIPTION
EMG-T5-T5HO-700	Up to 700 L. for T5 or T5HO
EMG-T5-T5HO-1300	Up to 1300 L. for T5 or T5HO
EMG-T8-BX-T5-T5HO-3200	Up to 3200 L. for T8, BX, T5 or T5HO
EMG-SD-T8-BX-T5-T5HO-1400	Self-Diagnostic 1400 L. for T8, BX, T5 or T5HO
EMG-ICE-T8-BX-T5-T5HO-1400	ICE Pack 1400 L. for T8, BX, T5 or T5HO
GTD	Generator Transfer Device

WIRING OPTIONS

C3	- 6' 3-wire Flex Cable (Single Circuit)
C4	- 6' 4-wire Flex Cable (Double Circuit)
FBF	- Internal Fast Blow Fuse
SBF	- Internal Slow-Blow Fuse
RIS	- Radio Interference Suppressor

OTHER OPTIONS

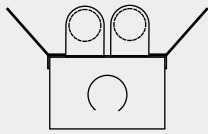
OCRWG1	- Wireguard (Only available with SYM reflectors)
OCNRMS	- Motion Sensor
OCNRVH	- V Hook and Chain Kit
OCNRGSS	- Cable Gripper Suspension Kit
USA	- Made in America Compliance

8' Fluorescent Industrial Strip

ACCESSORIES SECTION

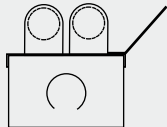
WHITE/ SILVER REFLECTOR GUIDE FOR OCR

WHITE REFLECTOR FOR OCR-2 LAMP



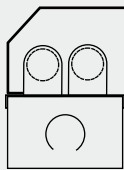
SYMMETRICAL

2-OCR-2-SYM-WH
3-OCR-2-SYM-WH
4-OCR-2-SYM-WH
8-OCR-2-SYM-WH



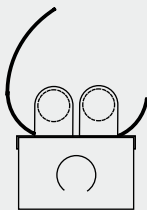
ASYMMETRICAL

2-OCR-2-ASY-WH
3-OCR-2-ASY-WH
4-OCR-2-ASY-WH
8-OCR-2-ASY-WH



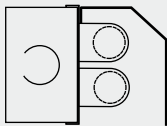
INSIDE ASYMMETRICAL

2-OCR-2-IAS-WH
3-OCR-2-IAS-WH
4-OCR-2-IAS-WH
8-OCR-2-IAS-WH



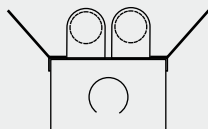
ELLIPTICAL

2-OCR-2-ELR-WH
3-OCR-2-ELR-WH
4-OCR-2-ELR-WH
8-OCR-2-ELR-WH



DOWNLIGHT

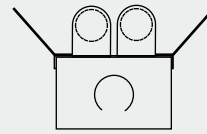
2-OCR-2-DLRL-WH
3-OCR-2-DLRL-WH
4-OCR-2-DLRL-WH
8-OCR-2-DLRL-WH



UPLIGHT SYMMETRICAL

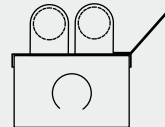
2-OCR-2-SYM-UPL-WH
3-OCR-2-SYM-UPL-WH
4-OCR-2-SYM-UPL-WH
8-OCR-2-SYM-UPL-WH

SILVER REFLECTOR FOR OCR-2 LAMP



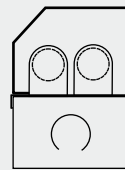
SYMMETRICAL

2-OCR-2-SYM-SR
3-OCR-2-SYM-SR
4-OCR-2-SYM-SR
8-OCR-2-SYM-SR



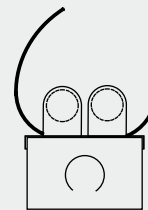
ASYMMETRICAL

2-OCR-2-ASY-SR
3-OCR-2-ASY-SR
4-OCR-2-ASY-SR
8-OCR-2-ASY-SR



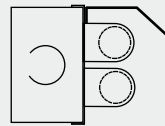
INSIDE ASYMMETRICAL

2-OCR-2-IAS-SR
3-OCR-2-IAS-SR
4-OCR-2-IAS-SR
8-OCR-2-IAS-SR



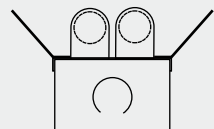
ELLIPTICAL

2-OCR-2-ELR-SR
3-OCR-2-ELR-SR
4-OCR-2-ELR-SR
8-OCR-2-ELR-SR



DOWNLIGHT

2-OCR-2-DLRL-SR
3-OCR-2-DLRL-SR
4-OCR-2-DLRL-SR
8-OCR-2-DLRL-SR



UPLIGHT SYMMETRICAL

2-OCR-2-SYM-UPL-SR
3-OCR-2-SYM-UPL-SR
4-OCR-2-SYM-UPL-SR
8-OCR-2-SYM-UPL-SR

T8/T5

OCR

Accessories - Reflector Guide

REFLECTOR FINISH

Reflectors are manufactured in Aluminium high reflectance specular Silver & White finishes. Custom colors or finishes are available upon request.

:: WH (High Efficient White Reflector)

:: SR (High Efficient Silver Reflector)

REFLECTOR MOUNTING

Reflectors mount onto existing ballast covers.