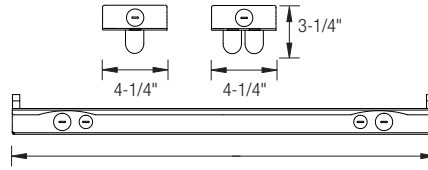
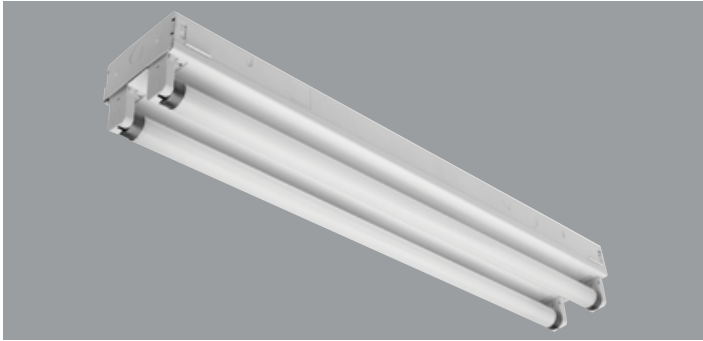


**T5 FLUORESCENT STRIP
(2 OR 4 LAMP)**



LENGTH
2' = 22-1/2"
3' = 34-3/8"
4' = 46-3/16"
8' = 92-1/4"



PRODUCT FEATURES:

- Heavy-duty 20-gauge steel for durability and code compliance
- Pretreated with five-stage iron phosphate process to ensure superior paint adhesion
- Painted with a high-gloss baked white enamel
- Shallow design is ideal for commercial and industrial spaces requiring general illumination
- Suitable for dry and damp environments
- Thermally protected, self-resetting, Class P, NPF, non-PCB and UL listed ballast
- Suitable for surface or suspended mounting
- Individual or continuous row mounting
- Lightweight design enables for quick, easy installation
- Quarter-turn fastener secures ballast cover to housing
- NEC required ballast disconnect is standard
- CEE qualified ballast comes standard on most fixture options (Consult factory for details)

LISTING

UL/C-UL listed to US and Canadian standards

WARRANTY

Guaranteed for one year against mechanical defects

T5
OC

Ordering Information > Example: 8-OC-2-54-T5-MVOLT-EMG-T5-T5HO-700

8	OC								
----------	-----------	--	--	--	--	--	--	--	--

FIXTURE SIZE	SERIES	WATTAGE	VOLTAGE ²	# OF BALLAST	BALLAST FACTOR
8- 8'	OC-Oracle Channel Open Strip	8' TANDEM FIXTURE 2-28-T5 (2 lamps/28W/T5) 2-54-T5HO (2 lamps/54W/T5HO) 4-28-T5 (4-lamps/28W/T5) 4-54-T5HO (4-lamps/54W/T5HO)	(Blank)- MVOLT (120/277) 120 277 347	(Blank)- 1 Ballast 2- 2 Ballasts	(Blank)- Normal BF HBF- High BF LBF- Low BF

REMOTE EMERGENCY BATTERY PACK OPTIONS (L. = LUMENS)	
ORDER CODE	DESCRIPTION
EMG-T5-T5HO-700	Up to 700 L. for T5 or T5HO
EMG-T5-T5HO-1300	Up to 1300 L. for T5 or T5HO
EMG-T8-BX-T5-T5HO-3200	Up to 3200 L. for T8, BX, T5 or T5HO
EMG-SD-T8-BX-T5-T5HO-1400	Self-Diagnostic 1400 L. for T8, BX, T5 or T5HO
EMG-ICE-T8-BX-T5-T5HO-1400	ICE Pack 1400 L. for T8, BX, T5 or T5HO
GTD	Generator Transfer Device

BALLAST CONFIGURATION & CODE		
28W/T5	54W/T5HO	DESCRIPTION
-	-	Electronic Instant Start
(Blank) ¹	(Blank)	Electronic Program Start
-	ADV-7 ¹	Advance Mark-7 ²
-	ADV-10 ¹	Advance Mark-10 ²
ADV-OPT	-	Advance Optanium ²
-	-	Advance Essential ²
-	ADV-ROVR ¹	Advance Rover ²
LUT-EHD ¹	LUT-EHD ¹	Lutron Ecosystem H-Series ²
-	-	Lutron Tu-Wire ²
LUT-EC5 ¹	-	Lutron Ecosystem ²
LUT-EC3 ¹	LUT-EC3 ¹	Lutron Eco-10 ²
-	-	Lutron Tve ²
LUT-H3D ¹	LUT-H3D ¹	Lutron Hi-Lume 3D ²
-	LUT-ECD ¹	Lutron Ecosystem (347V Only) ²

WIRING OPTIONS	
C3	- 6' 3-wire Flex Cable (Single Circuit)
C4	- 6' 4-wire Flex Cable (Double Circuit)
FBF	- Internal Fast Blow Fuse
SBF	- Internal Slow-Blow Fuse
RIS	- Radio Interference Suppressor

OTHER OPTIONS	
2OCWG	- 2' Wireguard
3OCWG	- 3' Wireguard
4OCWG	- 4' Wireguard
8OCWG	- 2'X4' Wireguards
OCMS	- Motion Sensor
OCVH	- V Hook and Chain Kit
OCGSS	- Cable Gripper Suspension Kit
USA	- Made in America Compliance

1- Requires 2 Ballasts for 4-lamps.
2- Voltage must be specified for dimming ballast.

8' Fluorescent Strip