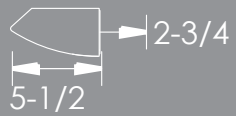
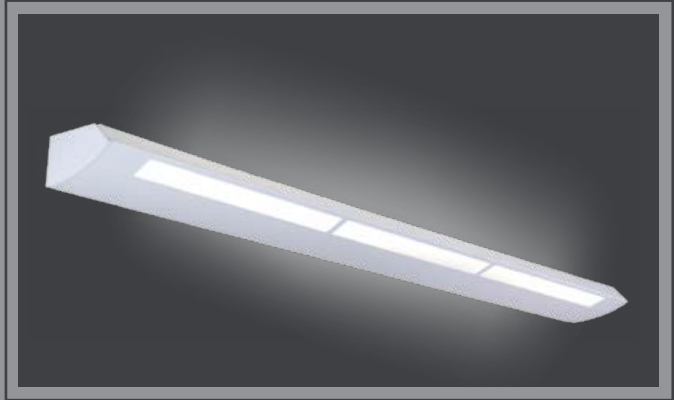




# ASW2-LED

ARCHITECTURAL LED WALL MOUNT  
LINEAR DIRECT/INDIRECT SYSTEM



2000 LUMENS	4000 LUMENS	6000 LUMENS	8000 LUMENS
19 WATT	37 WATT	56 WATT	74 WATT

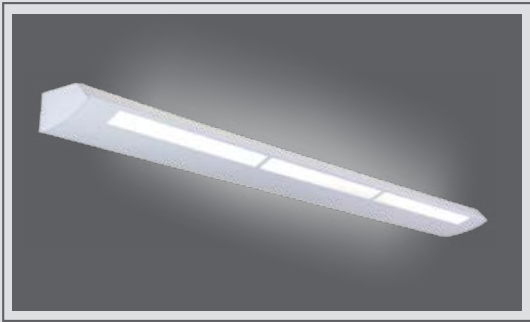
CALCULATED <b>L70</b> LIFETIME 150,000 HRS	CALCULATED <b>L85</b> LIFETIME 65,000 HRS
---	--

**APPLICATION:**  
Open office space ambient lighting for virtually glare-free and shadow free illumination. Ideal for school classrooms, meeting rooms, retail stores

- PRODUCT FEATURES:**
- An optical system engineered to maximize the output of LED light engines
  - Can be mounted from 12" to 18" from the ceiling while still producing very wide distribution for even ceiling brightness
  - Fixtures are shipped with die-cast aluminum joiners installed for suspension and structural continuity
  - Fixtures are designed with a white acrylic overlay that provides glowing ambient downlighting
  - White 20-gauge roll-formed steel housing
  - Rated at 85+ CRI and available in multiple CCTs
  - Life tested to ensure light output of L70 up to 150,000 hrs and L85 up to 65,000 hrs
  - Tested to LM-79 and LM-80 standards
  - LED lighting technology offers the highest return on initial investment over the lifetime of the fixture
  - Dimmable down to 1% with compatible dimming systems
  - LED light engine is completely removable and upgradable

# ASW2-LED

ARCHITECTURAL LED LINEAR DIRECT/  
INDIRECT PERFORATED (Wall Mount)



**PERFORMANCE** - The light engines found in the ASW2 are rated at 85+ CRI and are available in multiple CCTs: 3000K, 3500K, 4000K and 5000K. Rated and tested to LM-79 and LM-80 standards. The LEDs are also binned to a 3-step MacAdam ellipses to achieve consistent color from fixture to fixture.

**ELECTRICAL** - Powered by high-quality constant-current power LED drivers which are rated for 50 to 60Hz at 120-277V input, produce less than 20% THD, and have a power factor of .90 to 1.00.

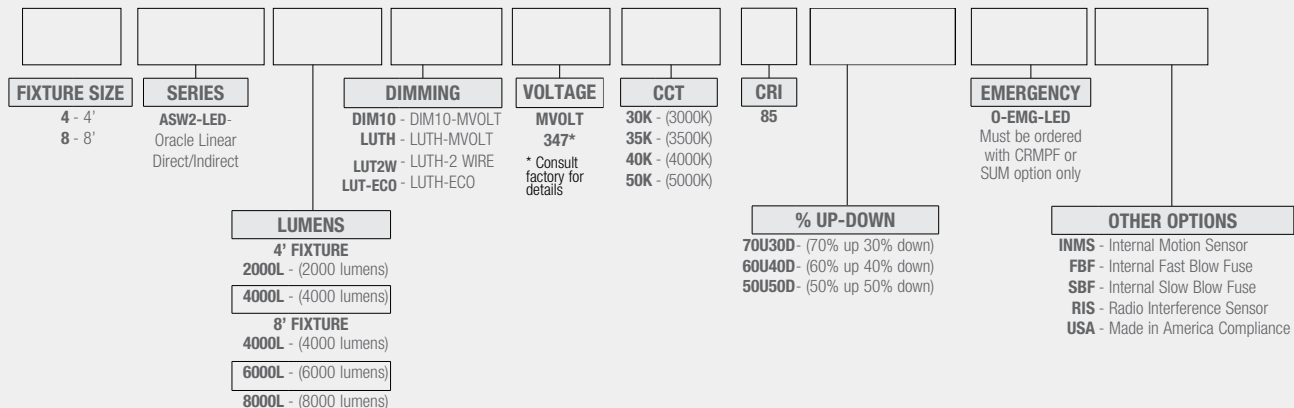
**DIMMING** - The ASW2-LED comes standard with 0-10V dimming on either 120 or 277V. Dimmable down to 1% of initial lumens. Also available in Lutron dimming options. Consult factory for dimmer compatibility.

**OPTIONS** - Fixtures can be shipped pre-installed with daylight harvesting controls, occupancy sensors, and/or power pack. Available manufacturer options include Leviton, Wattstopper, Hubble Automation, and others.

**QUALITY CONTROL** - Every fixture is turned on and rigorously tested by our QC Department before shipping.

**WARRANTY** - Limited 5 Year Warranty

## Ordering Information: Example: 4-ASW2-LED-4000L-DIM10-MVOLT-30K-85-70U30D



# FLEX SERIES

## CONTROL OPTIONS

### EASYFIT<sup>™</sup>

by EnOcean

#### Controls Options to be Installed on the Fixture

Self-powered sensors and switches, combined with LED fixture controllers and a commissioning tool, permit easy configuration, intelligent local control, and seamless integration into building automation systems.

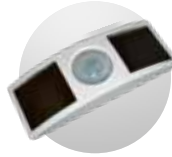


**LEDRU**  
LED Relay Zone  
Controller 0-10V



**LEDDU**  
LED Zone  
Controller 0-10V

#### Controls Provided by EnOcean



**EOSCU**  
Occupancy Sensor  
Ceiling Mount



**EOSWU**  
Occupancy Sensor  
Wall Mount



**ELLSU**  
Daylight Sensor  
Ceiling Mount



**ESRPU/ EDRPU**  
Wall Switches



**LEVITON**  
Wall Switches  
902 MHz category



**NWC 300U**  
Navigan Wireless  
Commissioner

### legrand<sup>®</sup>

WATTSTOPPER<sup>®</sup>

#### Controls Installed on the Fixture



#### LMFC-011

Fixture Will be Shipped Legrand Wattstopper DLM Enabled with LMFC-011 Module Controller Installed on the Fixture. Fixtures will be compatible with Legrand Wattstopper DLM Load Controllers, DLM Sensors, DLM Switches, DLM Remote Control, and DLM Configuration tool.

#### Switches



**LMSW-105** **LMDM-101**

#### Remote



**LMRH-105**

#### Configuration tool



**LMCT-100-2**

#### Plug Load Controllers



**LMPL-101**



**LMPL-201**

#### Sensors



**LMDC-100**



**LMLS-400**



**LMLS-500**



#### FD-301

Fixture Will be Shipped with Legrand Wattstopper FD-301 (Integrated Daylight Dimming Photosensor) installed and FS-PP-V2 Fixture Power Pack.



**FS-PP-V2**

# FLEX SERIES

## CONTROL OPTIONS



Philips EasySense sensors provide luminaire-level control with Occupancy sensing, Daylight harvesting, and Field task tuning.

### Controls Installed on the Fixture



#### PHILIPS-XSR + SNS200-CMP

Fixture will be Shipped Sensor Ready with PHILIPS-XSR driver and EasySense SNS200-CMP Sensor which is Included to be Remote Mounted. Fixture May Only be Controlled with Philips Field App or Wireless Switches

#### SRB

Fixture will be Shipped Sensor Ready with SRB Bridge. Fixture will be Compatible with EasySense Sensor SNS200-CMP which can be Added in the Field for Remote Mounting. Fixture May Only be Controlled with Philips Field App or Wireless Switches or any 0-10V. Wall Box Dimmer.



#### SRB + SNS200-CMP

Fixture Will be Shipped Sensor Ready with PHILIPS SRB Bridge and EasySense SNS200-CMP Sensor which is Included to be Remote Mounted. Fixture May Only be Controlled with Philips Field App or Wireless Switches or any 0-10V. Wall Box Dimmer.

### Controls Provided by Philips



ZBT-S1AWH

ZBT-S2AWH

Illumra Wireless Switches



Philips Field App



Enlighted Smart Sensors features digital motion, ambient light, and temperature sensing, the device provides autonomous fixture-level control

### Controls Installed on the Fixture



#### PHILIPS-XSR + FS-D22

Fixture Will be Shipped with Enlighted FS-D22 Two-wire sensor Sensor installed and PHILIPS-XSR driver. Fixture May be Controlled with Enlighted Gateway, Energy Manager or Enlighted Room Controller WS-2-00



#### CU-E3-1R + SU-4E-00

Fixture Will be Shipped with Enlighted SU-4E-00 Sensor installed and Enlighted CU-E3-1R Control Unit Power Pack. Fixture May be Controlled with Enlighted Gateway, Energy Manager or Enlighted Room Controller WS-2-00

#### CU-E3-1R



Fixture Will be Shipped Sensor Ready with Enlighted CU-E3-1R Control Unit Power Pack. Fixture will be compatible with Enlighted SU-4E-00 Sensor which can be Added in the Field Remote Mounting. Fixture May be Controlled with Enlighted Gateway, Energy Manager or Enlighted Room Controller WS-2-00



#### PHILIPS-XSR

Fixture Will be Shipped Sensor Ready with PHILIPS-XSR driver. Fixtures will be compatible with Enlighted CS-D2 Two-wire sensor which can be Added in the Field for Remote Mounting. Fixture May be Controlled with Enlighted Gateway, Energy Manager or Enlighted Room Controller WS-2-00.

### Controls Provided by Enlighted

#### WS-2-00

Enlighted Room Controller



Gateway



Switch



Programmable with Laptop



PoE Network Switch



Energy Manager

# FLEX SERIES

## CONTROL OPTIONS



### Controls Installed on the Fixture



**FCJS-010**  
Individual  
Fixture Control

Fixture Will be Shipped LUTRON VIVE Enabled with LUTRON FCJS-010 0-10V Control Module Installed on the Fixture. Fixtures will be compatible with Lutron FC-SENSOR Occupancy/Daylight Sensor or FC-VSENSOR Vacancy/Daylight Sensor which can be Added in the Field for Remote Mounting. Fixture May be Controlled with any Vive control systems. Fixtures must be ordered with a 0-10V. Driver.



**FCJS-ECO**  
Individual  
Fixture Control

Fixture Will be Shipped LUTRON VIVE Enabled with LUTRON FCJS-ECO EcoSystem Control Module Control Module Installed on the Fixture. Fixtures will be compatible with Lutron FC-SENSOR Occupancy/Daylight Sensor or FC-VSENSOR Vacancy/Daylight Sensor which can be Added in the Field for Remote Mounting. Fixture May be Controlled with any Vive control systems. Fixtures must be ordered with a Lutron Driver.

### Controls Provided by Lutron



Lutron  
App



Vive Wireless Hub



DayLight  
Sensor



Ceiling Mount  
Occupancy Sensor



Ceiling Mount  
Occupancy/Daylight  
Sensor



Wall Mount  
Occupancy Sensor



Wall Mount  
Switch



Pico  
Remote



Fixture will be shipped with Leviton ZL027-N0W power control module installed on the fixture. Fixtures will be compatible with Leviton ZL00J-D0W sensor control module which can be added in the field for remote mounting. Fixture must be controlled with Leviton Intellect Keypad Room Controller, or Leviton Neuron App.



**ZL027-N0W**  
Power control module



**ZL00J-D0W**  
Sensor control module

### Leviton Keypad



**ZLDNK-1W**



**ZLDNK-2W**



**ZLDNK-4W**



**ZLDNK-8W**

Intellect™ Keypad Room  
Controller (Required)

### Leviton App



Neuron App



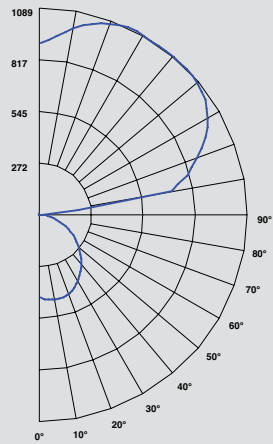
## 4-ASW2-LED-4000L-DIM10-MVOLT-6040

WATTAGE: 37 W

LUMENS: 4195

TOTAL LUMINAIRE EFFICACY: 113

## Candle Power Distribution (Candelas)



## Zonal Lumens Summary

Zone	Lumens	%Lamp	%Fixt
0-30°	326.00	N.A.	7.80
0-40°	520.48	N.A.	12.40
0-60°	880.48	N.A.	21.00
0-90°	1091.87	N.A.	26.00
0-180°	4195.3	N.A.	100.00

## Luminance Data (cd/sq.m)

Angle In Degrees	Average 0°	Average 45°	Average 90°
45°	8104	7997	7140
55°	7438	7394	6645
65°	6630	6690	6033
75°	5169	5559	5169
85°	4055	3476	3476

## Candela Tabulation

	0	45	90
0	438.1	438.1	438.1
5	449.8	445.9	436.8
15	451.1	442.0	414.7
25	421.2	410.8	374.4
35	365.3	358.8	319.8
45	295.1	291.2	260.0
55	219.7	218.4	196.3
65	144.3	145.6	131.3
75	68.9	74.1	68.9
85	18.2	15.6	15.6
90	0.0	0.0	0.0

## Spacing Criteria

0-180	:	N/A
90-270	:	N/A
Diagonal	:	N/A

## Coefficients of Utilization - Zonal Cavity Method

Effective Floor Cavity Reflectance 20% = PF

RC	RW	80%				70%				50%				30%				10%				0%			
		70%	50%	30%	10%	70%	50%	30%	10%	50%	30%	10%	50%	30%	10%	50%	30%	10%	50%	30%	10%	50%	30%	10%	0%
0	101	101	101	101	90	90	90	90	70	70	70	51	51	51	34	34	34	26	26	26	26	26	26	26	26
1	92	88	85	81	82	79	76	73	61	59	57	45	44	43	30	29	29	22	22	22	22	22	22	22	22
2	84	77	71	66	75	69	64	60	54	50	47	40	37	36	27	25	24	18	18	18	18	18	18	18	18
3	77	68	61	55	68	61	55	50	47	43	40	35	32	30	24	22	21	16	16	16	16	16	16	16	16
4	70	60	52	46	62	54	47	42	42	37	34	31	28	26	21	19	18	13	13	13	13	13	13	13	13
5	64	53	45	40	57	48	41	36	37	33	29	28	25	22	19	17	15	12	12	12	12	12	12	12	12
6	59	48	40	34	52	43	36	31	34	29	25	25	22	19	17	15	14	10	10	10	10	10	10	10	10
7	54	43	35	30	48	38	32	27	30	26	22	23	19	17	16	14	12	9	9	9	9	9	9	9	9
8	50	39	31	26	45	35	28	24	28	23	19	21	17	15	14	12	11	8	8	8	8	8	8	8	8
9	47	35	28	23	42	32	25	21	25	21	17	19	16	13	13	11	10	7	7	7	7	7	7	7	7
10	44	32	25	21	39	29	23	19	23	19	15	18	14	12	12	10	9	7	7	7	7	7	7	7	7

RC - Ceiling Cavity Reflectance

RW - Wall Reflectance