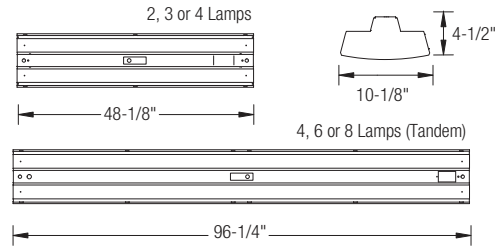
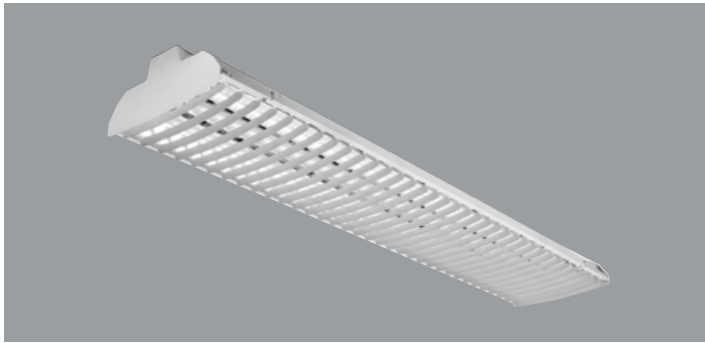


T8/T5 - 4' & 8' SHIELD BEAM FLUORESCENT HIGH BAY (2, 3, 4, 6 AND 8-LAMP) WITH CROSS BAFFLE



APPLICATION: Oracle Shield Beam High Bays are ideal for any retail application that requires great performance with the capabilities to reduce glare in typical high bays. Other applications include schools, warehouses and offices.

PRODUCT FEATURES:

- Fixture is designed with a flat blade cross baffle to provide high viewing lamp shielding to reduce brightness and glare
- Oracle Shield Beam High Bay offers a great alternative to traditional Metal Halide fixtures
- Channel is formed of code-gauge steel to resist the most demanding environments
- Constructed of one-piece ribbed unitized housing and corners that interlock to prevent aesthetic damage to fixture
- Post-painted high-gloss enamel finish ensures maximum adhesion and rust resistance
- Hinged doorframe allows for easy relamping and maintenance
- All sides and corners are turned in and hemmed, removing sharp edges for safe handling and installation
- High-efficiency premium-grade reflector is slotted to provide 20% uplight

- Comes standard with GE pro line multi-volt ballast (120/277V) for T8 models or Advance High-temperature Centium electronic 120-277V ballast for T5HO
- Suitable for suspension by chain, cable, pendant, or can also be surface mounted
- Using the latest optical technology, our shield Beam luminaire outperforms conventional MH fixtures while maintaining minimal energy consumption
- CEE qualified ballast comes standard on most fixture options (Consult factory for details)
- NEC required ballast disconnect is standard

LISTING

UL/C-UL listed to US and Canadian standard

WARRANTY

Guaranteed for five years against mechanical defects

Ordering Information > Example: 4-SDB-6-32-T8-ADV-10-MVOLT

4	SDB								
FIXTURE SIZE	SERIES	LAMPS	LAMP TYPE	VOLTAGE	# OF BALLAST	BALLAST FACTOR	LAMP INSTALLED		
4- 4'	SDB - Oracle Shield Beam Industrial Series	4' FIXTURE 2 3 4	32-T8 - 32W/T8 28-T5 - 28W/T5 54-T5HO - 54W/T5HO	(Blank) - MVOLT (120/277) 120 277 347 480	2, 3, 4-LAMPS (Blank) - 1 Ballast 2 - 2 Ballasts	(Blank) - Normal BF HBF - High BF LBF - Low BF	(Blank) - No lamp L30K - 3000K L35K - 3500K L41K - 4100K L50K - 5000K		
EMERGENCY BATTERY PACK OPTIONS (L. = LUMENS)									
ORDER CODE	DESCRIPTION								
EMG-T8-BX-450	Up to 450 L. for T8 or BX								
EMG-T8-BX-600	Up to 600 L. for T8 or BX								
EMG-T8-BX-700	Up to 700 L. for T8 or BX								
EMG-T8-BX-1400	Up to 1400 L. for T8 or BX								
EMG-T5-T5HO-700	Up to 700 L. for T5 or T5HO								
EMG-T5-T5HO-1300	Up to 1300 L. for T5 or T5HO								
EMG-SD-T8-BX-T5-T5HO-1400	Self-Diagnostic 1400 L. for T8, BX, T5 or T5HO								
EMG-ICE-T8-BX-T5-T5HO-1400	ICE Pack 1400 L. for T8, BX, T5 or T5HO								
GTD	Generator Transfer Device								
BALLAST CONFIGURATION & CODE									
32W/T8	54W/T5HO	DESCRIPTION							
(Blank)	-	Electronic Instant Start							
EPS	(Blank)	Electronic Program Start							

Consult Factory for Advance & Lutron dimming options.

STANDARD BALLAST INFO

LAMP	# OF LAMPS	LINE VOLTS	Ballast Factor	Power Factor% (>=)	THD% (<=)	Min. Starting Temp (°F/°C)
F32T8	2, 3, 4, 6, 8	120/277	1.15	99	10	-22/ -30
F54T5HO	2, 3, 4, 6, 8	120/277	1	98	10	-20/ -29

WIRING OPTIONS

PCSB120	- 10' Nema 5-15R 120V Straight Blade Plug
PCSB277	- 10' Nema 7-15R 277V Straight Blade Plug
PCTL120	- 10' Nema L5-15R 120V Twist Lock Plug
PCTL277	- 10' Nema L7-15R 277V Twist Lock Plug
S01	- 10' 120V/277V SO Cord
S02	- 10' 480V SO Cord
C3	- 6' 3-wire Flex Cable (Single Circuit)
C4	- 6' 4-wire Flex Cable (Double Circuit)

(Consult Factory for 208V, 248V, 347V and 480V wiring)

OTHER OPTIONS

MH	- Mounting Hub
GSS	- Gripple Suspension System
GSSP	- Gripple System with Paddles
VHCH	- V-Hook with chain kit
VH	- V Hook
MS-480	- Motion Sensor for 480V
MS	- Motion Sensor
MSPH	- Motion Sensor with Photocell
GL	- Generic Lamps Installed
NCB	- No Cross Baffle
USA	- Made in America Compliance

T8/T5
SDB

Shield Beam Fluorescent 2, 3, 4, 6, 8-lamp High Bay