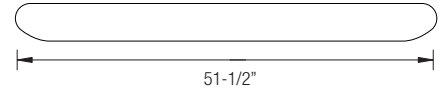
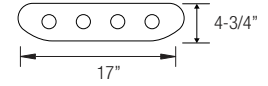
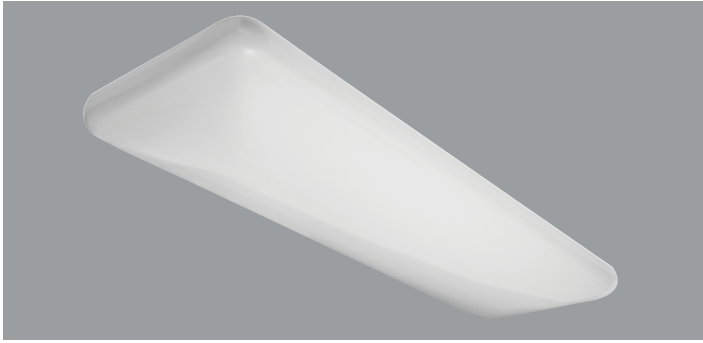


**T8/T5 - 4' FLUORESCENT CLOUD  
(4-LAMP, SURFACE MOUNT)**



**PRODUCT FEATURES:**

- Manufactured in heavy-gauge steel for durability and code compliance
- Pretreated with five-stage iron phosphate process to ensure superior paint adhesion
- Painted high-gloss baked white enamel
- Shallow design is ideal for commercial, industrial and residential spaces requiring general illumination
- Suitable for dry and damp environments
- Thermally protected, self-resetting, Class P, NPF, non-PCB and UL listed ballast
- Lightweight design enables for quick, easy installation
- NEC required ballast disconnect is standard
- CEE qualified ballast comes standard on most fixture options (Consult factory for details)

**LISTING**

UL/C-UL listed to US and Canadian standard

**WARRANTY**

Guaranteed for one year against mechanical defects

**LENS** - White acrylic diffuse lens

T8/T5  
OSC

**Ordering Information > Example: 4-OSC-4-32-T8-ADV-10-MVOLT-EMG-T8-BX-700**



FIXTURE SIZE	SERIES	WATTAGE	VOLTAGE <sup>2</sup>	# OF BALLAST	BALLAST FACTOR
4 - 4'	OSC - Oracle Fluorescent Cloud	4' FIXTURE 4-28-T5 (4-lamps/28W/T5) 4-54-T5HO (4-lamps/54W/T5HO) 4-32-T8 (4-lamps/32W/T8)	(Blank) - MVOLT (120/277) 120 277 347	(Blank) - 1 Ballast 2 - 2 Ballasts	(Blank) - Normal BF HBF - High BF LBF - Low BF

BALLAST CONFIGURATION & CODE			
32W/T8	28W/T5	54W/T5HO	DESCRIPTION
(Blank)	-	-	Electronic Instant Start
EPS	(Blank) <sup>1</sup>	(Blank)	Electronic Program Start
ADV-7	-	ADV-7 <sup>1</sup>	Advance Mark-7 <sup>2</sup>
ADV-10 <sup>1</sup>	-	ADV-10 <sup>1</sup>	Advance Mark-10 <sup>2</sup>
-	ADV-OPT	-	Advance Optanium <sup>2</sup>
ADV-ESS <sup>1</sup>	-	-	Advance Essential <sup>2</sup>
ADV-ROVR	-	ADV-ROVR <sup>2</sup>	Advance Rover <sup>2</sup>
LUT-EHD <sup>1</sup>	LUT-EHD <sup>1</sup>	LUT-EHD <sup>1</sup>	Lutron Ecosystem H-Series <sup>2</sup>
LUT-2W <sup>1</sup>	-	-	Lutron Tu-Wire <sup>2</sup>
LUT-EC5 <sup>1</sup>	LUT-EC5 <sup>1</sup>	-	Lutron Ecosystem <sup>2</sup>
LUT-EC3 <sup>1</sup>	LUT-EC3 <sup>1</sup>	LUT-EC3 <sup>1</sup>	Lutron Eco-10 <sup>2</sup>
LUT-TVE <sup>1</sup>	-	-	Lutron Tve <sup>2</sup>
LUT-H3D <sup>1</sup>	LUT-H3D <sup>1</sup>	LUT-H3D <sup>1</sup>	Lutron Hi-Lume 3D <sup>2</sup>
-	-	LUT-ECD <sup>1</sup>	Lutron Ecosystem (347V Only) <sup>2</sup>

1 - Requires 2 Ballasts.  
2 - Voltage must be specified for dimming ballast.

EMERGENCY BATTERY PACK OPTIONS (L = LUMENS)	
ORDER CODE	DESCRIPTION
EMG-T8-BX-450	Up to 450 L. for T8 or BX
EMG-T8-BX-600	Up to 600 L. for T8 or BX
EMG-T8-BX-700	Up to 700 L. for T8 or BX
EMG-T8-BX-1400	Up to 1400 L. for T8 or BX
EMG-T5-T5HO-700	Up to 700 L. for T5 or T5HO
EMG-T5-T5HO-1300	Up to 1300 L. for T5 or T5HO
EMG-SD-T8-BX-T5-T5HO-1400	Self-Diagnostic 1400 L. for T8, BX, T5 or T5HO
EMG-ICE-T8-BX-T5-T5HO-1400	ICE Pack 1400 L. for T8, BX, T5 or T5HO
GTD	Generator Transfer Device

WIRING OPTIONS	
FBF	- Internal Fast Blow Fuse
SBF	- Internal Slow-Blow Fuse
RIS	- Radio Interference Suppressor

**OTHER OPTIONS**  
USA - Made in America Compliance

Fluorescent Cloud Fixture