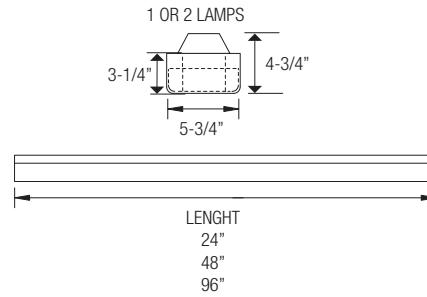
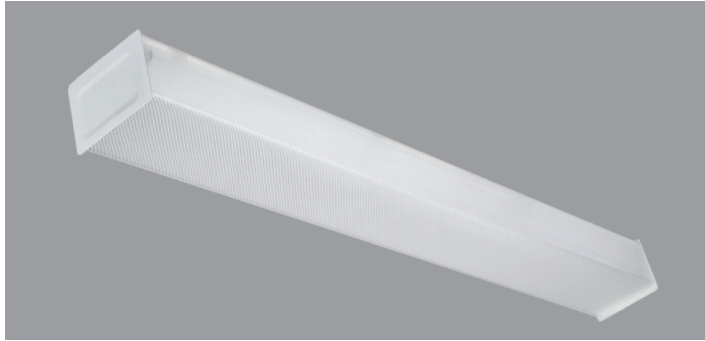


T8/T5 FLUORESCENT WRAP AROUND NARROW BODY (1 OR 2 LAMP, 2 OR 4 LAMP TANDEM)



APPLICATION:

- General illumination for narrow area lay outs • Aisle areas for retail stores and small retail store format • **This fixture is for ceiling mount only**
- Hallways/corridors, office buildings, schools, hospitals and public walkway areas • Library stacks and storage areas

PRODUCT FEATURES:

- 22-gauge steel utilized throughout for durability and code compliance
- Pretreated with five-stage iron phosphate process to ensure superior paint adhesion painted high-gloss baked white enamel
- Shallow design is ideal for commercial, industrial and residential spaces requiring general illumination
- Suitable for dry and damp environments
- Can be used for parallel or cross-corridor layouts
- Fixture can be continuous row or individually mounted
- Can be surface mounted or can be suspended
- NEC required ballast disconnect is standard
- CEE qualified ballast comes standard on most fixture options (Consult factory for details)

LENS - Clear prismatic acrylic Lens.

LISTING

UL/C-UL listed to US and Canadian standard

WARRANTY

Guaranteed for one year against mechanical defects

T8/T5
ONW

Ordering Information > Example: 2-ONW-1-17-T8-ADV-10-MVOLT-EMG-T8-BX-700

FIXTURE SIZE	SERIES	WATTAGE	VOLTAGE	# OF BALLAST	BALLAST FACTOR
2 - 2'	ONW-Oracle Fluorescent Economy Wrap Around Narrow Body	2' FIXTURE	(Blank) - MVOLT (120/277) 120 - 120 Volts 277 - 277 Volts 347 - 347 Volts	(Blank) - 1 Ballast 2 - 2 Ballasts	(Blank) - Normal BF HBF - High BF LBF - Low BF
3 - 3'		1-17-T8 (1 lamp/17W/T8)			
4 - 4'		2-17-T8 (2 lamps/17W/T8)			
8 - 8'		1-14-T5 (1 lamp/14W/T5)			
		1-24-T5HO (1 lamp/24W/T5HO)			
2-14-T5 (2 lamps/14W/T5)					
2-24-T5HO (2 lamps/24W/T5HO)					
3' FIXTURE		1-25-T8 (1 lamp/25W/T8)			
2-25-T8 (2 lamps/25W/T8)					
1-21-T5 (1 lamp/21W/T5)					
1-39-T5HO (1 lamp/39W/T5HO)					
2-21-T5 (2 lamps/21W/T5)					
2-39-T5HO (2 lamps/39W/T5HO)					
4' FIXTURE		1-32-T8 (1 lamp/32W/T8)			
2-32-T8 (2 lamps/32W/T8)					
1-28-T5 (1 lamp/28W/T5)					
1-54-T5HO (1 lamp/54W/T5HO)					
2-28-T5 (2 lamps/28W/T5)					
2-54-T5HO (2 lamps/54W/T5HO)					
8' TANDEM FIXTURE		2-32-T8 (2 lamps/32W/T8)			
4-32-T8 (4-lamps/32W/T8)					
2-28-T5 (2 lamps/28W/T5)					
2-54-T5HO (2 lamps/54W/T5HO)					
4-28-T5 (4-lamps/28W/T5)					
4-54-T5HO (4-lamps/54W/T5HO)					

EMERGENCY BATTERY PACK OPTIONS (L. = LUMENS)	
ORDER CODE	DESCRIPTION
EMG-T8-BX-450	Up to 450 L. for T8 or BX
EMG-T8-BX-600	Up to 600 L. for T8 or BX
EMG-T8-BX-700	Up to 700 L. for T8 or BX
EMG-T8-BX-1400	Up to 1400 L. for T8 or BX
EMG-T5-T5HO-700	Up to 700 L. for T5 or T5HO
EMG-T5-T5HO-1300	Up to 1300 L. for T5 or T5HO
EMG-SD-T8-BX-T5-T5HO-1400	Self-Diagnostic 1400 L. for T8, BX, T5 or T5HO
EMG-ICE-T8-BX-T5-T5HO-1400	ICE Pack 1400 L. for T8, BX, T5 or T5HO
GTD	Generator Transfer Device

T8/T5 - BALLAST CONFIGURATION & CODE									
17W/T8	14W/T5	24W/T5	25W/T8	21W/T5	39W/T5HO	32W/T8	28W/T5	54W/T5HO	DESCRIPTION
(Blank)	-	-	-	-	-	(Blank)	-	-	Electronic Instant Start
EPS	(Blank)	(Blank)	(Blank)	(Blank)	(Blank)	EPS	(Blank) ¹	(Blank)	Electronic Program Start

WIRING OPTIONS	
FBF	- Internal Fast Blow Fuse
SBF	- Internal Slow-Blow Fuse
RIS	- Radio Interference Suppressor

OTHER OPTIONS	
INMS	- Motion Sensor
USA	- Made in America Compliance

¹- Requires 2 Ballasts for 4-lamps.

Consult Factory for ADVANCE or LUTRON dimming ballast options.