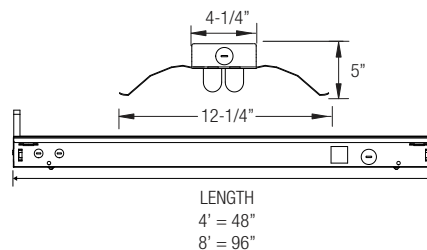
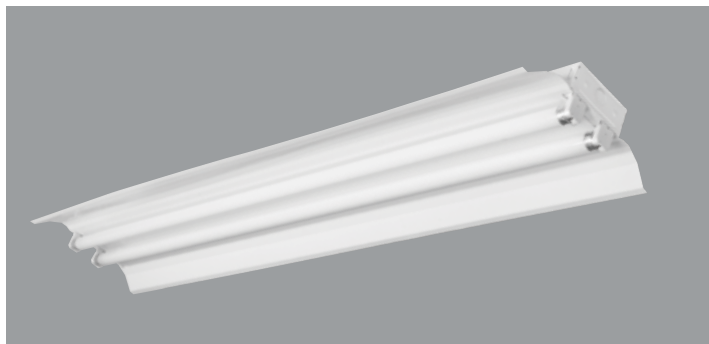


**T8 FLUORESCENT INDUSTRIAL STRIP**  
(1 OR 2 LAMP)



**PRODUCT FEATURES:**

- Heavy-duty 20-gauge steel utilized throughout for durability and code compliance
- Powder-coated painted for maximum operating life
- Pretreated with five-stage iron phosphate process to ensure superior paint adhesion
- Painted high-gloss baked white enamel
- Suitable for dry and damp environments
- Thermally protected, self-resetting, Class P, NPF, non-PCB and UL listed ballast
- Suitable for surface and/or suspended mounting
- Individual or continuous row mounting
- Standard reflector is manufactured in aluminum with high reflectance white finish
- Reflector is secured to housing with 1/4 turn fasteners (ships separately)
- NEC required ballast disconnect is standard
- CEE qualified ballast comes standard on most fixture options (Consult factory for details)

**LISTING**

UL/C-UL listed to US and Canadian standard

**WARRANTY**

Guaranteed for one year against mechanical defects

T8  
OIC

**Ordering Information > Example: 4-OIC-2-32-T8-MVOLT-EMG-T8-BX-700**

4	OIC							
FIXTURE SIZE	SERIES	WATTAGE	VOLTAGE <sup>1</sup>	# OF BALLAST	BALLAST FACTOR			
4'- 4'	OIC Oracle Industrial Series	4' FIXTURE 1-32-T8 (1 lamp/32W/T8) 2-32-T8 (2 lamps/32W/T8)	(Blank) - MVOLT (120/277) 120 277 347	(Blank) - 1 Ballast 2- 2 Ballasts	(Blank) - Normal BF HBF - High BF LBF - Low BF			

**BALLAST CONFIGURATION & CODE**

32W/T8	DESCRIPTION
(Blank)	Electronic Instant Start
EPS	Electronic Program Start
ADV-7	Advance Mark-7 <sup>2</sup>
ADV-10 <sup>1</sup>	Advance Mark-10 <sup>2</sup>
-	Advance Optanium <sup>2</sup>
ADV-ESS <sup>1</sup>	Advance Essential <sup>2</sup>
ADV-ROVR	Advance Rover <sup>2</sup>
LUT-EHD <sup>1</sup>	Lutron Ecosystem H-Series <sup>2</sup>
LUT-2W <sup>1</sup>	Lutron Tu-Wire <sup>2</sup>
LUT-EC5 <sup>1</sup>	Lutron Ecosystem <sup>2</sup>
LUT-EC3 <sup>1</sup>	Lutron Eco-10 <sup>2</sup>
LUT-TVE <sup>1</sup>	Lutron Tve <sup>2</sup>
LUT-H3D <sup>1</sup>	Lutron Hi-Lume 3D <sup>2</sup>
-	Lutron Ecosystem (347V Only) <sup>2</sup>

1- Requires 2 Ballasts.

2- Voltage must be specified for dimming ballast.

**REMOTE EMERGENCY BATTERY PACK OPTIONS (L. = LUMENS)**

ORDER CODE	DESCRIPTION
EMG-T8-BX-450	Up to 450 L. for T8 or BX
EMG-T8-BX-600	Up to 600 L. for T8 or BX
EMG-T8-BX-700	Up to 700 L. for T8 or BX
EMG-T8-BX-1400	Up to 1400 L. for T8 or BX
EMG-T8-BX-T5-T5HO-3200	Up to 3200 L. for T8, BX, T5 or T5HO
EMG-SD-T8-BX-T5-T5HO-1400	Self-Diagnostic 1400 L. for T8, BX, T5 or T5HO
EMG-ICE-T8-BX-T5-T5HO-1400	ICE Pack 1400 L. for T8, BX, T5 or T5HO
GTD	Generator Transfer Device
EMG-SD	Self Testing/Self Diagnostics Emergency Battery

**WIRING OPTIONS**

C3	- 6' 3-wire Flex Cable (Single Circuit)
C4	- 6' 4-wire Flex Cable (Double Circuit)
FBF	- Internal Fast Blow Fuse
SBF	- Internal Slow-Blow Fuse
RIS	- Radio Interference Suppressor

**OTHER OPTIONS**

OICWG2	- Wireguard
OCMS	- Motion Sensor
OCVH	- V Hook and Chain Kit
OCGSS	- Cable Gripper Suspension Kit
USA	- Made in America Compliance