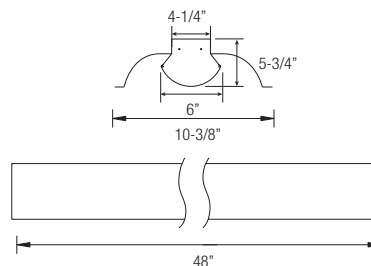


### T8/T5 FLUORESCENT DIRECT/INDIRECT LUMINAIRE (SURFACE OR SUSPENDED MOUNT)



#### APPLICATION:

The OB3DI Series Surface Mount Direct/Indirect Luminaire is the "Perfect" lighting solution for interior office, commercial and retail installations. Designed for general or task lighting. This economical alternative approach is the answer to meeting restrictive budgets with a modern lighting design.

#### PRODUCT FEATURES:

- Heavy-duty 20-gauge steel utilized throughout for durability and code compliance
- Painted high-gloss baked white enamel
- Pretreated with five-stage iron phosphate process to ensure superior paint adhesion
- Standard reflector comes in white highly reflective finish
- Shallow design is ideal for commercial and industrial spaces requiring general illumination
- Suitable for dry and damp environments
- Thermally protected, self-resetting, Class P, NPF, non-PCB and UL listed ballast
- Lightweight design enables for quick, easy installation
- NEC required ballast disconnect is standard
- CEE qualified ballast comes standard on most fixture options (Consult factory for details)

#### OPTIONS AND ACCESSORIES:

- Emergency ballast, motion sensors
- Reflector choices and lens option

#### LISTING

UL/C-UL listed to US and Canadian standard

#### WARRANTY

Guaranteed for one year against mechanical defects

### Ordering Information > Example: 4-OB3DI-2-32-T8-ADV-10-MVOLT-EMG-T8-BX-700

4	OB3DI								
FIXTURE SIZE	SERIES	WATTAGE	VOLTAGE <sup>1</sup>	# OF BALLAST	BALLAST FACTOR	REFLECTOR			
4 - 4'	OB3DI-Oracle Surface Mount Direct/Indirect w/ Clear Acrylic Shield	4' FIXTURE 2-32-T8 (2 lamps/32W/T8) 2-28-T5 (2 lamps/28W/T5) 2-54-T5HO (2 lamps/54W/T5HO)	(Blank)- MVOLT (120/277) 120 277 347	(Blank)- 1 Ballast 2- 2 Ballasts	(Blank)- Normal BF HBF- High BF LBF- Low BF	(Blank)- White OB2DI-WSU- White/Slotted OB2DI-SR- Silver			

#### BALLAST CONFIGURATION & CODE

32W/T8	28W/T5	54W/T5HO	DESCRIPTION
(Blank)	-	-	Electronic Instant Start
EPS	(Blank)	(Blank)	Electronic Program Start
ADV-7	-	ADV-7	Advance Mark-7 <sup>1</sup>
ADV-10	-	ADV-10	Advance Mark-10 <sup>1</sup>
-	ADV-OPT	-	Advance Optanium <sup>1</sup>
ADV-ESS	-	-	Advance Essential <sup>1</sup>
ADV-ROVR	-	ADV-ROVR	Advance Rover <sup>1</sup>
LUT-EHD	LUT-EHD	LUT-EHD	Lutron Ecosystem H-Series <sup>1</sup>
LUT-2W	-	-	Lutron Tu-Wire <sup>1</sup>
LUT-EC5	LUT-EC5	-	Lutron Ecosystem <sup>1</sup>
LUT-EC3	LUT-EC3	LUT-EC3	Lutron Eco-10 <sup>1</sup>
LUT-TVE	-	-	Lutron Tve <sup>1</sup>
LUT-H3D	LUT-H3D	LUT-H3D	Lutron Hi-Lume 3D <sup>1</sup>
-	-	LUT-ECD	Lutron Ecosystem (317V Only) <sup>1</sup>

<sup>1</sup>- Voltage must be specified for dimming ballast.

#### EMERGENCY BATTERY PACK OPTIONS (L. = LUMENS)

ORDER CODE	DESCRIPTION
EMG-T8-BX-450	Up to 450 L. for T8 or BX
EMG-T8-BX-600	Up to 600 L. for T8 or BX
EMG-T8-BX-700	Up to 700 L. for T8 or BX
EMG-T8-BX-1400	Up to 1400 L. for T8 or BX
EMG-T5-T5HO-700	Up to 700 L. for T5 or T5HO
EMG-T5-T5HO-1300	Up to 1300 L. for T5 or T5HO
EMG-SD-T8-BX-T5-T5HO-1400	Self-Diagnostic 1400 L. for T8, BX, T5 or T5HO
EMG-ICE-T8-BX-T5-T5HO-1400	ICE Pack 1400 L. for T8, BX, T5 or T5HO
GTD	Generator Transfer Device

#### WIRING OPTIONS

C3	- 6' 3-wire Flex Cable (Single Circuit)
C4	- 6' 4-wire Flex Cable (Double Circuit)
FBF	- Internal Fast Blow Fuse
SBF	- Internal Slow-Blow Fuse
RIS	- Radio Interference Suppressor

#### OTHER OPTIONS

INMS	- Motion Sensor
OCGSS	- Cable Gripper Suspension Kit
USA	- Made in America Compliance

#### SUSPENSION SYSTEM

Refer to page XXX