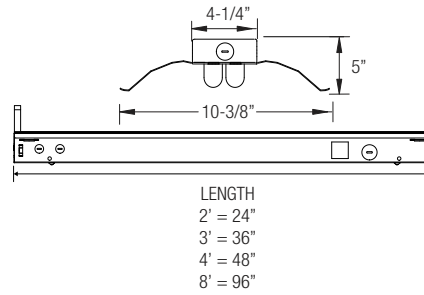


T5 FLUORESCENT INDUSTRIAL STRIP W/ REFLECTOR (1 OR 2 LAMP)



PRODUCT FEATURES:

- Heavy-duty 20-gauge steel utilized throughout for durability and code compliance
- Powder-coated painted for maximum operating life
- Pretreated with five-stage iron phosphate process to ensure superior paint adhesion
- Painted high-gloss baked white enamel
- Suitable for dry and damp environments
- Thermally protected, self-resetting, Class P, NPF, non-PCB and UL listed ballast
- Suitable for surface and/or suspended mounting
- Individual or continuous row mounting
- Standard reflector is manufactured in high reflectance white
- Reflector is secured to housing with 1/4 turn fasteners (ships separately)
- Reflector options:
 - Aluminium high reflectance white paint/slotted (20% uplight)
 - Aluminium specular silver/slotted (20% uplight)
 - Aluminium white asymmetrical reflector
 - Aluminium specular silver/asymmetrical reflector

- NEC required ballast disconnect is standard
- CEE qualified ballast comes standard on most fixture options (Consult factory for details)

LISTING

UL/C-UL listed to US and Canadian standard

WARRANTY

Guaranteed for one year against mechanical defects

NOTE: All Aluminium Reflectors are special order (check with factory)

Ordering Information > Example: 3-OCR-2-21-T5-MVOLT-EMG-T5-T5HO-700

3	OCR								
FIXTURE SIZE	SERIES	WATTAGE	VOLTAGE ²	# OF BALLAST	BALLAST FACTOR	REFLECTOR OPTIONS			
3- 3'	OCR Oracle Industrial Series with Reflector	3' FIXTURE 2-21-T5 (2 lamps/21W/T5) 2-39-T5HO (2 lamps/39W/T5HO)	(Blank)- MVOLT (120/277) 120 277 347	(Blank)- 1 Ballast 2- 2 Ballasts	(Blank)- Normal BF HBF- High BF LBF- Low BF	Refer to page 291			

BALLAST CONFIGURATION & CODE

21W/T5	39W/T5HO	DESCRIPTION
-	-	Electronic Instant Start
(Blank)	(Blank)	Electronic Program Start
-	-	Advance Mark-7 ²
-	-	Advance Mark-10 ²
-	-	Advance Optanium ²
-	-	Advance Essential ²
-	-	Advance Rover ²
-	-	Lutron Ecosystem H-Series ²
-	-	Lutron Tu-Wire ²
LUT-EC5	LUT-EC5	Lutron Ecosystem ²
LUT-EC3	-	Lutron Eco-10 ²
-	-	Lutron Tve ²
LUT-H3D	LUT-H3D	Lutron Hi-Lume 3D ²
-	-	Lutron Ecosystem (347V Only) ²

1- Requires 2 Ballasts for 4-lamps.

2- Voltage must be specified for dimming ballast.

REMOTE EMERGENCY BATTERY PACK OPTIONS (L. = LUMENS)

ORDER CODE	DESCRIPTION
EMG-T5-T5HO-700	Up to 700 L. for T5 or T5HO
EMG-T5-T5HO-1300	Up to 1300 L. for T5 or T5HO
EMG-T8-BX-T5-T5HO-3200	Up to 3200 L. for T8, BX, T5 or T5HO
EMG-SD-T8-BX-T5-T5HO-1400	Self-Diagnostic 1400 L. for T8, BX, T5 or T5HO
EMG-ICE-T8-BX-T5-T5HO-1400	ICE Pack 1400 L. for T8, BX, T5 or T5HO
GTD	Generator Transfer Device

WIRING OPTIONS

C3	- 6' 3-wire Flex Cable (Single Circuit)
C4	- 6' 4-wire Flex Cable (Double Circuit)
FBF	- Internal Fast Blow Fuse
SBF	- Internal Slow-Blow Fuse
RIS	- Radio Interference Suppressor

OTHER OPTIONS

OCRWG1	- Wireguard (Only available with SYM reflectors)
OCNRMS	- Motion Sensor
OCNRVH	- V Hook and Chain Kit
OCNRGSS	- Cable Gripper Suspension Kit
USA	- Made in America Compliance

T5
OCR

3' Fluorescent Industrial Strip