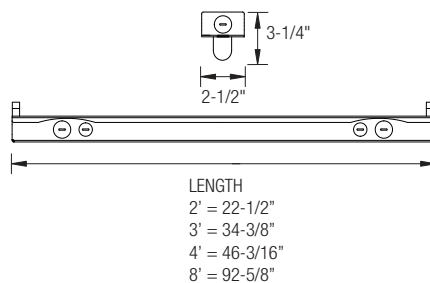
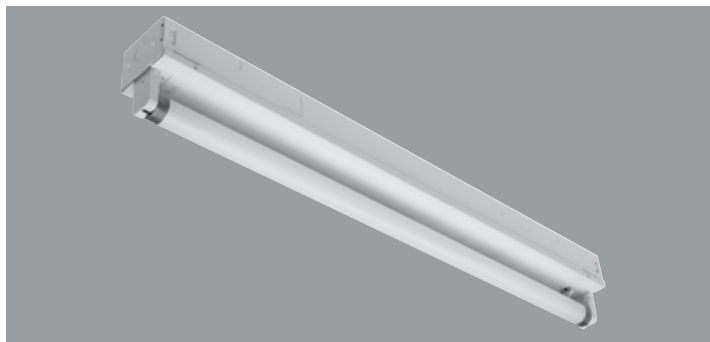


### T5 FLUORESCENT STRIP NARROW BODY (1 LAMP)



#### PRODUCT FEATURES:

- Heavy-duty 20-gauge steel utilized throughout for durability and code compliance
- Pretreated with five-stage iron phosphate process to ensure superior paint adhesion
- Painted high-gloss baked white enamel
- Shallow design is ideal for commercial and industrial spaces requiring general illumination
- Suitable for dry and damp environments
- Thermally protected, self-resetting, Class P, NPF, non-PCB and UL listed ballast
- Suitable for surface or suspended mounting
- Individual or continuous row mounting
- Lightweight design enables for quick, easy installation
- Quarter-turn fastener secures ballast cover to housing
- NEC required ballast disconnect is standard

#### LISTING

UL/C-UL listed to US and Canadian standard

#### WARRANTY

Guaranteed for one year against mechanical defects

T5  
OCN

#### Ordering Information > Example: 3-OCN-1-21-T5-MVOLT-EMG-T5HO-700

3	OCN							
FIXTURE SIZE	SERIES	WATTAGE	VOLTAGE*	# OF BALLAST	BALLAST FACTOR			
3- 3'	OCN- Oracle Channel Narrow Body Open Strip	3' FIXTURE 1-21-T5 (1 lamp/21W/T5) 1-39-T5HO (1 lamp/39W/T5HO)	(Blank)- MVOLT (120/277) 120 277 347	(Blank)- 1 Ballast 2- 2 Ballasts	(Blank)- Normal BF HBF- High BF LBF- Low BF			

#### BALLAST CONFIGURATION & CODE

21W/T5	39W/T5HO	DESCRIPTION
-	-	Electronic Instant Start
(Blank)	(Blank)	Electronic Program Start
-	-	Advance Mark-7 <sup>1</sup>
-	-	Advance Mark-10 <sup>1</sup>
-	-	Advance Optanium <sup>1</sup>
-	-	Advance Essential <sup>1</sup>
-	-	Advance Rover <sup>1</sup>
-	-	Lutron Ecosystem H-Series <sup>1</sup>
-	-	Lutron Tu-Wire <sup>1</sup>
LUT-EC5	LUT-EC5	Lutron Ecosystem <sup>1</sup>
LUT-EC3	-	Lutron Eco-10
-	-	Lutron Tve <sup>1</sup>
LUT-H3D	LUT-H3D	Lutron Hi-Lume 3D <sup>1</sup>
-	-	Lutron Ecosystem (347V Only) <sup>1</sup>

<sup>1</sup> - Voltage must be specified for dimming ballast.

#### REMOTE EMERGENCY BATTERY PACK OPTIONS (L. = LUMENS)

ORDER CODE	DESCRIPTION
EMG-T5-T5HO-700	Up to 700 L. for T5 or T5HO
EMG-T5-T5HO-1300	Up to 1300 L. for T5 or T5HO
EMG-SD-T8-BX-T5-T5HO-1400	Self-Diagnostic 1400 L. for T8, BX, T5 or T5HO
EMG-ICE-T8-BX-T5-T5HO-1400	ICE Pack 1400 L. for T8, BX, T5 or T5HO
GTD	Generator Transfer Device

#### WIRING OPTIONS

C3	- 6' 3-wire Flex Cable (Single Circuit)
C4	- 6' 4-wire Flex Cable (Double Circuit)
FBF	- Internal Fast Blow Fuse
SBF	- Internal Slow-Blow Fuse
RIS	- Radio Interference Suppressor

#### OTHER OPTIONS

20CNWG	- 2' Wireguard
30CNWG	- 3' Wireguard
40CNWG	- 4' Wireguard
80CNWG	- (2) 4' Wireguards
OCNMS	- Motion Sensor
OCNVH	- V Hook and Chain Kit
OCNGSS	- Cable Gripper Suspension Kit
USA	- Made in America Compliance