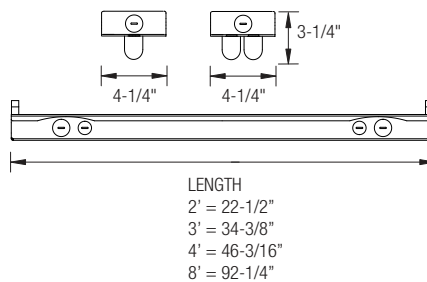
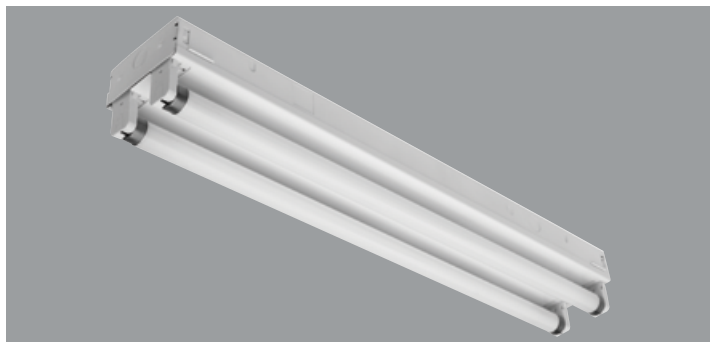


### T5 FLUORESCENT STRIP (1 OR 2 LAMP)



#### PRODUCT FEATURES:

- Heavy-duty 20-gauge steel for durability and code compliance
- Pretreated with five-stage iron phosphate process to ensure superior paint adhesion
- Painted with a high-gloss baked white enamel
- Shallow design is ideal for commercial and industrial spaces requiring general illumination
- Suitable for dry and damp environments
- Thermally protected, self-resetting, Class P, NPF, non-PCB and UL listed ballast
- Suitable for surface or suspended mounting
- Individual or continuous row mounting
- Lightweight design enables for quick, easy installation
- Quarter-turn fastener secures ballast cover to housing
- NEC required ballast disconnect is standard
- CEE qualified ballast comes standard on most fixture options (Consult factory for details)

#### LISTING

UL/C-UL listed to US and Canadian standards

#### WARRANTY

Guaranteed for one year against mechanical defects

#### Ordering Information > Example: 3-OC-2-21-T5-MVOLT-EMG-T5-T5HO-700

3	OC							
FIXTURE SIZE	SERIES	WATTAGE	VOLTAGE <sup>2</sup>	# OF BALLAST	BALLAST FACTOR	REMOTE EMERGENCY BATTERY PACK OPTIONS (L. = LUMENS)		
3'-3'	OC-Oracle Channel Open Strip	<b>1-21-T5</b> (1 lamp/21W/T5) <b>1-39-T5HO</b> (1 lamp/39W/T5HO) <b>2-21-T5</b> (2 lamps/21W/T5) <b>2-39-T5HO</b> (2 lamps/39W/T5HO)	<b>(Blank)</b> - MVOLT (120/277) <b>120</b> <b>277</b> <b>347</b>	<b>(Blank)</b> - 1 Ballast <b>2</b> - 2 Ballasts	<b>(Blank)</b> - Normal BF <b>HBF</b> - High BF <b>LBF</b> - Low BF			
						WIRING OPTIONS		
						OTHER OPTIONS		
						<b>C3</b> - 6' 3-wire Flex Cable (Single Circuit)	<b>20CWG</b> - 2' Wireguard	
						<b>C4</b> - 6' 4-wire Flex Cable (Double Circuit)	<b>30CWG</b> - 3' Wireguard	
						<b>FBF</b> - Internal Fast Blow Fuse	<b>40CWG</b> - 4' Wireguard	
						<b>SBF</b> - Internal Slow-Blow Fuse	<b>80CWG</b> - 2'X4' Wireguards	
						<b>RIS</b> - Radio Interference Suppressor	<b>OCMS</b> - Motion Sensor	
							<b>OCVH</b> - V Hook and Chain Kit	
							<b>OCGSS</b> - Cable Gripper Suspension Kit	
							<b>USA</b> - Made in America Compliance	

BALLAST CONFIGURATION & CODE		
21W/T5	39W/T5HO	DESCRIPTION
-	-	Electronic Instant Start
(Blank)	(Blank)	Electronic Program Start
-	-	Advance Mark-7 <sup>2</sup>
-	-	Advance Mark-10 <sup>2</sup>
-	-	Advance Optanium <sup>2</sup>
-	-	Advance Essential <sup>2</sup>
-	-	Advance Rover <sup>2</sup>
-	-	Lutron Ecosystem H-Series <sup>2</sup>
-	-	Lutron Tu-Wire <sup>2</sup>
<b>LUT-EC5</b>	<b>LUT-EC5</b>	Lutron Ecosystem <sup>2</sup>
<b>LUT-EC3</b>	-	Lutron Eco-10 <sup>2</sup>
-	-	Lutron Tve <sup>2</sup>
<b>LUT-H3D</b>	<b>LUT-H3D</b>	Lutron Hi-Lume 3D <sup>2</sup>
-	-	Lutron Ecosystem (347V Only) <sup>2</sup>

1- Requires 2 Ballasts for 4-lamps.

2- Voltage must be specified for dimming ballast.