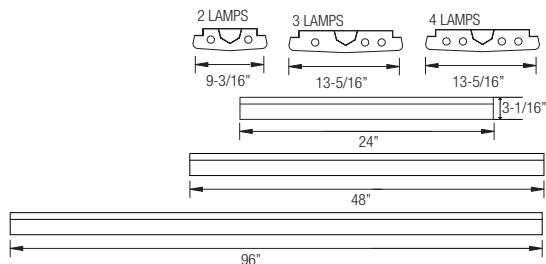
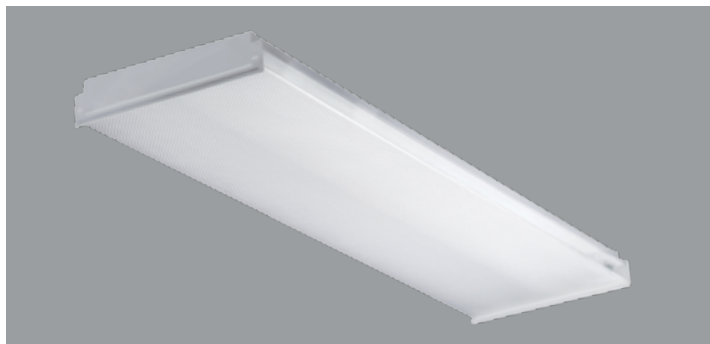


T8/T5 - 2', 4' & 8' INDUSTRIAL FLUORESCENT WRAP AROUND (2, 3 OR 4 LAMP)



APPLICATION:

Ideal for general office lighting, corridors, educational institutions, hospitals, and retail.

PRODUCT FEATURES:

- Heavy-duty 20-gauge steel utilized throughout for durability and code compliance
- Pretreated with five-stage iron phosphate process to ensure superior paint adhesion
- Provides even illumination up to 180 degrees
- Painted high-gloss baked white enamel
- Shallow design is ideal for commercial, industrial and residential spaces requiring general illumination
- Suitable for dry and damp environments
- Thermally protected, self-resetting, Class P, NPF, non-PCB and UL listed ballast
- Lightweight design enables for quick, easy installation
- Individual or continuous row mounting
- NEC required ballast disconnect is standard
- CEE qualified ballast comes standard on most fixture options (Consult factory for details)

LENS - Prismatic acrylic Lens

LISTING

UL/C-UL listed to US and Canadian standards

WARRANTY

Guaranteed for one year against mechanical defects

T8/T5
OIW

Ordering Information > Example: 2-OIW-2-17-T8-ADV-10-MVOLT-EMG-T8-BX-700

2	OIW						
FIXTURE SIZE	SERIES	WATTAGE	VOLTAGE ¹	# OF BALLAST	BALLAST FACTOR		
2 - 2'	OIW-Oracle Industrial Wrap Around	2' FIXTURE 2-14-T5 (2 lamps/14W/T5) 3-14-T5 (3 lamps/14W/T5) 4-14-T5 (4-lamps/14W/T5) 2-17-T8 (2 lamps/17W/T8) 3-17-T8 (3 lamps/17W/T8) 4-17-T8 (4-lamps/17W/T8)	120- 120 MVOLT - (120/277) 277- 277 347- 347	(Blank) - 1 Ballast 2- 2 Ballasts	(Blank) - Normal BF HBF - High BF LBF - Low BF		

BALLAST CONFIGURATION & CODE

17W/T8	14W/T5	DESCRIPTION
(Blank) ¹	-	Electronic Instant Start
EPS ²	EPS ²	Electronic Program Start

1. Requires 2 ballasts for 6 and 8-lamp fixture.
 2. Requires 2 ballasts for 6-lamp fixture and 3 ballasts for 8-lamp fixture.
 3. Requires 3 ballasts for 6-lamp fixture and 4 ballasts for 8-lamp fixture.
- Consult Factory for ADVANCE or LUTRON dimming ballast options.

EMERGENCY BATTERY PACK OPTIONS (L. = LUMENS)

ORDER CODE	DESCRIPTION
EMG-T8-BX-450	Up to 450 L. for T8 or BX
EMG-T8-BX-600	Up to 600 L. for T8 or BX
EMG-T8-BX-700	Up to 700 L. for T8 or BX
EMG-T8-BX-1400	Up to 1400 L. for T8 or BX
EMG-T5-T5HO-700	Up to 700 L. for T5 or T5HO
EMG-T5-T5HO-1300	Up to 1300 L. for T5 or T5HO
EMG-SD-T8-BX-T5-T5HO-1400	Self-Diagnostic 1400 L. for T8, BX, T5 or T5HO
EMG-ICE-T8-BX-T5-T5HO-1400	ICE Pack 1400 L. for T8, BX, T5 or T5HO
GTD	Generator Transfer Device

WIRING OPTIONS

FBF	- Internal Fast Blow Fuse
SBF	- Internal Slow-Blow Fuse
RIS	- Radio Interference Suppressor

OTHER OPTIONS

INMS	- Motion Sensor
USA	- Made in America Compliance