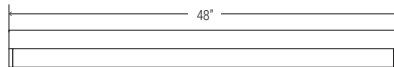
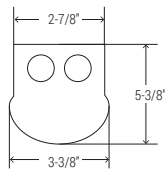




MULTI-LUMEN
SELECTOR

EASY 3 COLORS
SELECTOR
3500K • 4000K • 5000K



NOMINAL LUMENS	DELIVERED LUMENS	WATTAGE
4000	4373	31.6 W
3000	3082	21.3 W
2000	2448	16.7 W

Based on 4000K, 85+ CRI. Actual wattage may vary +/- 5%

FEATURES

The slim profile of the Architectural LED Linear makes it ideal for library stacks or narrow layouts. Flexible design delivers continuous, uniform and glare-free illumination. Available in single pendant or continuous mounting for seamless connection from luminaire to luminaire, with adjustable mounting heights. For use as general or task lighting in hallways, corridors, parking lots, educational, healthcare, office, and industrial applications.

LUMENS	2000/3000/4000
CCT	35K/40K/50K
CRI	85+
COLOR QUALITY	3 Step MacAdam Ellipse
LENGTH	2', 4' or 8'
MOUNTING	Suspended or Surface
DIMMING & CONTROL	0-10V Flicker Free 1% Dimming Standard (DIM10)
EMERGENCY	10W - Up to 1000L output
LIFETIME	L70 at 50,000 Hours
PHOTOMETRIC TESTS	In Accordance with IES LM79-08, LM80 and TM-30, TM-21



OPTICS & PERFORMANCE

Frosted acrylic lens provides even, shadow-free illumination. Lens has tool-less removal, ensuring easy upgrading and maintenance.

CONSTRUCTION

Heavy-duty 20-gauge cold rolled steel body. High-gloss white finish is pre-treated with 5-stage iron phosphate coating, which provides superior paint adhesion and protection against weathering.

INSTALLATION

Surface or suspended mounting; individual or continuous row mounting (CRM). The first luminaire in the row for CRM will always be the power supply feed. After plugging in the male and female harnesses, which are supplied with each luminaire, they will easily slide together. Secure with two screws in the connecting brackets.

DRIVER ELECTRICAL INFORMATION

Powered by high-quality constant-current power LED drivers, rated for 50 to 60Hz at 120-277V input, produce less than 20% THD, and have a power factor of .90 to 1.00. Male and female 18-gauge 6 wire plug connectors are included with every luminaire to allow for simple, hassle-free continuous wiring. Each luminaire must be installed male to female.

OPTIONS

Pre-installed with daylight harvesting controls, occupancy sensors, and/or power packs for individual or room control solutions.

MULTI LUMEN/MULTI CCT

Easily field-selectable multi-lumen and multi-CCT selector switches allow you to easily change the intensity and CCT in the field.

DIMMING & DRIVER INFORMATION

DIM10 - Flicker Free 1% Dimming Standard (DIM10) 0-10V dimming on either MVOLT 120, 277V.

WARRANTY

Five-year warranty for parts and components. (Labor not included)

LISTINGS

c-UL-us - Listed for Feed Through Wiring.
Listed for DLC, California Title 24 compliant.
c UL us Listed for Damp location

Example: **2-OEC-LED-2000L/3000L/4000L-DIM10-MVOLT-35K/40K/50K-85**

