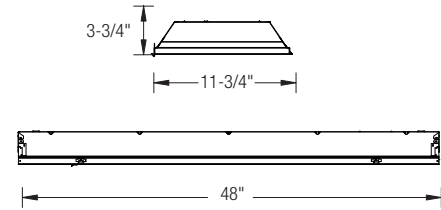
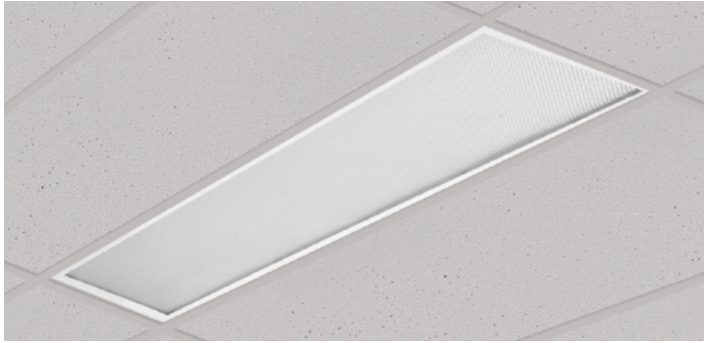


TROFFER FLUORESCENT SERIES

T8/T5 - 1' X 4' FLUORESCENT RECESSED SPECIFICATION GRADE TROFFER



APPLICATION:

General illumination for most commercial applications including schools, offices & retail spaces.

PRODUCT FEATURES:

- Mitred door frame prevents light leaks and minimizes dust from entering fixture
- Constructed of one-piece ribbed unitized housing and corners that interlock, preventing aesthetic damage to luminaire
- Door frame is designed with cam latches and T-hinges to secure frame to housing and allows for easy lamp maintenance.
- Gasketed door frame prevents light leakage.
- Clear 0.100" thick #12 pattern acrylic lens is standard
- Housing and door frame interface provides a superior mechanical light seal and hinges down for easy lamp replacement
- Ballast can be accessed from below the ceiling
- Post-painted high-gloss white powder coat finish maximizes distribution and efficiency while providing visual comfort
- Four corner tie points are standard for safety wire support when required

- All sides and corners are turned in and hemmed, removing sharp edges for safe handling and installation
- Built-in earthquake clips standard
- Same-day shipping on most options (Consult factory)
- Supplied standard with Philips Advance, GE or Universal ballast
- Wide variety of dimming and daylight harvesting options available
- CEE qualified ballast comes standard on most fixture options (Consult factory for details)
- NEC required ballast disconnect is standard

LISTING

UL/C-UL listed to US and Canadian standard

WARRANTY

Guaranteed for one year against mechanical defects

Ordering Information > Example: 14-OT-1-32-T8-ADV-10-MVOLT-A12

14	OT								
FIXTURE SIZE 14-1' X 4'	SERIES OT-Oracle Troffer	TRIM TYPE (Blank)-Grid (Consult factory for Slot T mounting option)	VOLTAGE¹ (Blank)- MVOLT (120/277) 120 277 347	# OF BALLAST (Blank) - 1 Ballast 2 - 2 Ballasts	BALLAST FACTOR (Blank) - Normal BF HBF - High BF LBF - Low BF	LAMP INSTALLED (Blank) - No lamp L30K - 3000K L35K - 3500K L41K - 4100K L50K - 5000K			
# OF LAMPS/LAMP TYPE			*MASTER/SATELLITE						
T8-LAMP 1-32-T8 (1 lamp/32W/T8) 2-32-T8 (2 lamps/32W/T8)			T5 LAMP 1-28-T5 (1 lamp/28W/T5) 2-28-T5 (2 lamps/28W/T5) 1-54-T5HO (1 lamp/54W/T5HO) 2-54-T5HO (2 lamps/54W/T5HO)						
(For other lamp type, please consult factory)			DIFFUSER TYPE A12 #12 pattern acrylic .10" thick A125 #12 pattern acrylic .125" thick A19 #19 pattern acrylic .156" thick A15 #15 pattern acrylic .20" thick ASW Acrylic smooth .080" thick PCL1 5/8"X5/8"X3/8" plastic louvers PCL2 1-1/2"X1-1/2"X1" plastic louver PCL3 3/4"X3/4"X1/2" plastic louver PCL4 3"X3"X1-1/2" plastic louver						
BALLAST CONFIGURATION & CODE									
32W/T8	28W/T5	54W/T5HO	DESCRIPTION						
(Blank)	-	-	Electronic Instant Start						
EPS	(Blank)	(Blank)	Electronic Program Start						
ADV-7	-	ADV-7	Advance Mark-7 ¹						
ADV-10	-	ADV-10	Advance Mark-10 ¹						
-	ADV-OPT	-	Advance Optanium ¹						
ADV-ESS	-	-	Advance Essential ¹						
ADV-ROVR	-	ADV-ROVR	Advance Rover ¹						
LUT-EHD	LUT-EHD	LUT-EHD	Lutron Ecosystem H-Series ¹						
LUT-2W	-	-	Lutron Tu-Wire ¹						
LUT-EC5	LUT-EC5	-	Lutron Ecosystem ¹						
LUT-EC3	LUT-EC3	LUT-EC3	Lutron Eco-10 ¹						
LUT-TVE	-	-	Lutron Tve ¹						
LUT-H3D	LUT-H3D	LUT-H3D	Lutron Hi-Lume 3D ¹						
-	-	LUT-ECD	Lutron Ecosystem (347V Only) ¹						
¹ - Voltage must be specified for dimming ballast.									
EMERGENCY BATTERY PACK OPTIONS (L. = LUMENS)									
ORDER CODE		DESCRIPTION							
EMG-T8-BX-450		Up to 450 L. for T8 or BX							
EMG-T8-BX-600		Up to 600 L. for T8 or BX							
EMG-T8-BX-700		Up to 700 L. for T8 or BX							
EMG-T8-BX-1400		Up to 1400 L. for T8 or BX							
EMG-T5-520		Up to 520 L. for T5							
EMG-T5-T5HO-700		Up to 700 L. for T5 or T5HO							
EMG-T5-T5HO-1300		Up to 1300 L. for T5 or T5HO							
EMG-T8-BX-T5-T5HO-3200		Up to 3200 L. for T8, BX, T5 or T5HO							
EMG-SD-T8-BX-T5-T5HO-1400		Self-Diagnostic 1400 L. for T8, BX, T5 or T5HO							
EMG-ICE-T8-BX-T5-T5HO-1400		ICE Pack 1400 L. for T8, BX, T5 or T5HO							
GTD		Generator Transfer Device							
MANY OTHER BODINE AND IOTA EMERGENCY PACKS ARE AVAILABLE, PLEASE CONSULT FACTORY. VISIT WWW.BODINE.COM OR WWW.IOTAENGINEERING.COM FOR MORE DETAILS.									
OTHER OPTIONS									
14FK - Flange Kit for 1' X 4' Fixture		SBF - Internal Slow-Blow Fuse							
C3 - 6' 3-wire Flex Cable (Single Circuit)		RIS - Radio Interference Suppressor							
C4 - 6' 4-wire Flex Cable (Double Circuit)		USA - Made in America Compliance							
FBF - Internal Fast Blow Fuse		GDF - Gasketed Door Frame							
14ALDF - Aluminum Door frame		Special options are available							