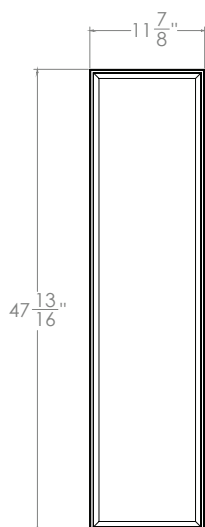


**EASY 3 COLORS
SELECCTOR**
3500K • 4000K • 5000K



NOMINAL LUMENS	DELIVERED LUMENS	WATTAGE
4000	4678	42 W
3000	3632	31 W
2000	2434	19 W

Based on 4000K, 85+ CRI. Actual wattage may vary +/- 5%

FEATURES

This fully luminous LED flat panel delivers exceptional performance and aesthetically pleasing optics, optimizing shallow plenum spaces. Perfect for new construction applications or retrofitting existing fluorescent troffer luminaires. It offers a range of dimming, lumen and CCT options. Perfect for either recessed or surface mounted installations, it's an ideal choice for commercial office space, retail merchandising, educational, and healthcare facilities.

LUMENS	2000/ 3000/ 4000
CCT	35K/40K/50K
CRI	85+
COLOR QUALITY	3 Step MacAdam Ellipse
SIZE	2'x4', 2'x2', 1'x4'
MOUNTING	Recessed, Suspended, Surface Mount
DIMMING & CONTROL	0-10V Flicker Free Dimming Standard (DIM10)
EMERGENCY	10W - Up to 1000L output (Bodine BSL310) 20W - Up to 2000L output (Bodine BSL20)
LIFETIME	L70 at 60,000 Hours
PHOTOMETRIC TESTS	In Accordance with IES LM79-08, LM80 and TM-30, TM-21



MAINTENANCE

The driver is removable and upgradable even after luminaire installation. Luminaire can be regularly and safely wiped down to ensure optimal performance.

OPTICAL SYSTEM

The proprietary optical system utilizes a unique combination of reflective and refractive optical components to achieve a uniform, aesthetically pleasing appearance. Use of a guide plate laser allows high density pixels to shine, creating an even illumination with no glare, while maintaining a high efficiency.

CONSTRUCTION

Heavy duty 20-gauge cold rolled steel back panel and aluminum frame, post-painted and engineered for maximum strength and extended life. All corners interlock to prevent aesthetic damage to the luminaire, with sides and corners uniformly turned in and hemmed to remove sharp edges for safe handling and easy installation. Luminaire is supplied with multiple wiring entrances for easy daisy chain of luminaires, to add power packs, whips, or other accessories in the field, or for continuous row mounting.

FINISH

Post-painted with a 93% reflective white coat to improve luminaire efficacy, with all body components seamlessly interlocked for added structural strength.

MOUNTING

Luminaires accommodate lay-in ceilings, Slot T, and T-bar suspension systems for 5/8" and 3/8" ceiling thicknesses. Four corner tie points are standard for safety wire support when required, with built-in earthquake clips, standard. Luminaires may be available with flange kits, surface mounted kits, and other options. SMK required if suspending the fixture.

OPTIONS

Luminaires can be shipped pre-installed with whips, modular wiring systems.

DRIVER ELECTRICAL INFORMATION

Powered by high-quality constant-current power LED drivers which are rated for 50 to 60Hz at 120/277V input. Available in 347V., produce less than 20% THD, and have a power factor of .90 to 1.00.

DIMMING & DRIVER INFORMATION

DIM10 - Flicker Free Dimming Standard (DIM10) 0-10V dimming on either MVOLT 120, 277V.

WARRANTY

Five-year warranty for parts and components. (Labor not included)

LISTINGS

c-UL-us - Listed for Feed Through Wiring.

Listed for DLC.

Can be used to comply with Title 24, non residential listing requirements.

Example: **14-FPL1-LED-2000/3000/4000L-DIM10-MVOLT-35K/40K/50K-85**

14	FPL1	LED							
FIXTURE SIZE	SERIES	TYPE	LUMENS	DIMMING	VOLTAGE	CCT	CRI	EMERGENCY	OTHER OPTIONS
14 - 1' X 4'	FPL1 LED Flat Panel	LED	2000/3000/4000L	DIM10 - 0-10V Dimming	MVOLT 347V	35K/40K/50K	85	0-EMG-LED-10W 0-EMG-LED-20W	14FK - 1'x4' Flange Kit 14-FPL1-LED-SMK - 1'x4' Surface Mount Kit FBF - Internal Fast Blow Fuse SBF - Internal Slow Blow Fuse RIS - Radio Interference Suppressor USA - Made in America Compliance

1- Luminaire will be shipped with Powerpacks pre-installed, ready to be integrated to designated control systems

2- Luminaire will be shipped with Sensors installed on the luminaire, allowing for individual luminaire control. Luminaires will be ready to be integrated with designated control systems

3- Luminaire will be shipped with Sensors to be remotely installed on the ceiling. Luminaires will be ready to be integrated with designated control systems

BRAND	EASYFIT by EnOcean	LUTRON	enlighted	LEVITON	OSRAM	PHILIPS EasySense	legrand®
CONTROL UNIT	<input type="checkbox"/> LEDRU LED Relay Zone Controller 0-10V ¹ <input type="checkbox"/> LEDDU LED Zone Controller 0-10V ¹	<input type="checkbox"/> FCJS-010 Lutron Vive 0-10V Individual Pow Pak (Luminaire is shipped Vive Enabled) ^{1 4} <input type="checkbox"/> FCJS-ECO Lutron Vive Eco-system Pow Pak (Luminaire is shipped Vive Enabled) ^{1 4}	<input type="checkbox"/> CU-4E-FMH Fixture Mount Control Unit ^{1 5}	<input type="checkbox"/> ZL027 -NOW Intellect Power Control Module ^{1 6} <input type="checkbox"/> ZL027 -NOW Intellect Power Control Module ^{1 6}	<input type="checkbox"/> EN-WCM2-ZB-DR Wireless Control Module ^{1 7} <input type="checkbox"/> EN- ALC-ZB-BK-DR Wireless Area Lighting Control Module ^{1 7} <input type="checkbox"/> ZBHA-CLM-DIM-ENC Connected Lighting Module DIM ^{1 7}	<input type="checkbox"/> SBR -BS Xitanium SR Bridge ^{1 8}	<input type="checkbox"/> LMFC-011 ON/OFF/0-10V dimming fixture controller ^{1 9}
INTEGRAT SENSOR	N/A	N/A	N/A	N/A	N/A	N/A	N/A
*WIRELESS OCCUPANCY SENSOR	<input type="checkbox"/> EOSCU-W-EO Occupancy Sensor - Ceiling Mounted (Must be specified with LEDRU or LEDDU control unit) ³	N/A	N/A	N/A	N/A	N/A	<input type="checkbox"/> LMDC-100 Dual technology PIR Ceiling Mount Occupancy Sensor ³
*WIRELESS DAYLIGHT SENSOR	<input type="checkbox"/> ELLSU-W-EO Light Level Sensor - Ceiling Mounted (Must be specified with LEDRU or LEDDU control unit) ³	N/A	N/A	N/A	N/A	N/A	<input type="checkbox"/> LMLS-400 Single zone switching and dimming digital photosensor ³
*WIRELESS OCCUPANCY & DAYLIGHT SENSOR	N/A	N/A	<input type="checkbox"/> SU-5E-IoT IoT Node Micro Sensor ³ <input type="checkbox"/> SU-5E-CL Connected Lighting Micro Sensor ³ <input type="checkbox"/> SU-5E-IL Independent Lighting / Enlighted One Micro Sensor ³ <input type="checkbox"/> SU-5S-H-(IoT/CL/IL) Surface Mount Sensor ³ (Must be specified with CU- 4E-FMH Control Unit)	<input type="checkbox"/> ZL00J -TOW Intellect Intelligent Fixture Control System ³ (Must be specified with ZL027 -NOW Control Unit)	<input type="checkbox"/> EN-CLM-PIR-DD-ZB SensiLUM™ Wireless Integrated Sensor <input type="checkbox"/> EN-SCPPH-1500-ZB Wireless Passive Infrared Occupancy and Photo Sensors ³ (Must be specified with EN-WCM2-ZB-DR or EN- ALC-ZB-BK-DR Control Unit)	<input type="checkbox"/> SNS200- CMP SNS200 for grouping ³	N/A
ACCESSORIES	N/A	N/A	<input type="checkbox"/> TMC-SU-5E Tile Mount Carrier <input type="checkbox"/> CBL-5E-CU4-30N 30 inch Sensor Cable for CU-4 and IoT Ready™ drivers <input type="checkbox"/> CBL-5E-CU4-7F 7 foot Sensor Cable for CU-4 and IoT Ready™ drivers	N/A	N/A	N/A	N/A
NOTES	N/A	4- Luminaire will be compatible with Lutron LRF2-OCR2B-P-WH Ceiling mount 360° occupancy/vacancy sensor & LRF2-DCRB-WH Ceiling-mount daylight sensor. Sensors must be ordered through Lutron.	5- Luminaire will be compatible with ENLIGHTED SU-5E-IoT, SU-5E-CL, SU-5E-IL, SU-5S-H, Sensors.	6-Luminaire will be compatible with Leviton Intellect App & Keypad Room Controller	7-Luminaire will be compatible with EN-SCPPH-1500-ZB Wireless Passive Infrared Occupancy and Photo Sensors	8-Luminaire will be compatible with Philips field and wireless switch.	9-Luminaire will be compatible with DLM Room control system LMPB-100. DLM control system must be orderd through Legrand.