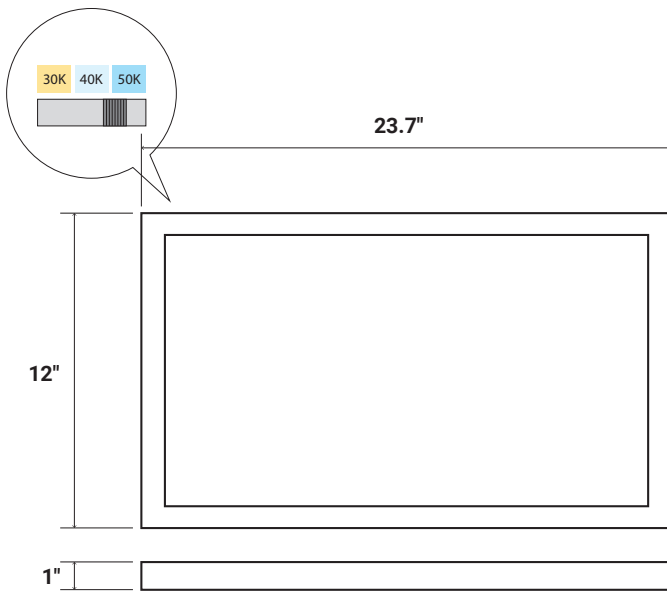




**EASY 3 COLORS
SELECCTOR**
3000K • 4000K • 5000K



FEATURES

This fully luminous LED flat panel delivers exceptional performance and aesthetically pleasing optics, optimizing shallow plenum spaces. It offers a range of dimming, lumen and Multi-CCT options. Perfect for surface mounted installations, it's an ideal choice for commercial office space, retail merchandising, educational, and healthcare facilities.

LUMENS	1800L
CCT	30K/40K/50K
CRI	80+
COLOR QUALITY	3 Step MacAdam Ellipse
MOUNTING	Ceiling Mount
DIMMING & CONTROL	DIMTR (Triac) Forward Phase
EMERGENCY	25W high voltage inverter (remote)
WORKING TEMPERATURE	-40°C (-40°F) to +40°C (+104°F)
LIFETIME	L70 at 60,000Hrs
PHOTOMETRIC TESTS	In Accordance with IES LM79-08, LM80 and TM-30, TM-21

NOMINAL LUMENS	DELIVERED LUMENS	WATTAGE
1800	1698	17W

Based on 4000K, 85+ CRI. Actual wattage may vary +/- 5%



OPTICAL SYSTEM

The proprietary optical system utilizes a unique combination of reflective and refractive optical components to achieve a uniform, aesthetically pleasing appearance. Use of a light guide plate creates even, glare-free illumination, while maintaining high efficiency.

CONSTRUCTION

Heavy duty 20-gauge cold rolled steel back panel and aluminum frame, post-painted and engineered for maximum strength and extended life. All corners interlock to prevent aesthetic damage to the luminaire, with sides and corners uniformly turned in and hemmed to remove sharp edges for safe handling and easy installation.

FINISH

Post-painted with a 93% reflective white coat to improve luminaire efficacy, with all body components seamlessly interlocked for added structural strength.

MOUNTING

Surface mounting. Attach to the ceiling using mountin plate to the J-box. Easy plug in connectors (Included) for easy replacement or servicing.

DRIVER ELECTRICAL INFORMATION

Powered by high-quality constant-current power LED drivers which are rated for 50 to 60Hz at 120V input.

DIMMING & DRIVER INFORMATION

DIMTR - Triac & Electronic low voltage dimming. Available in 120V only.

WARRANTY

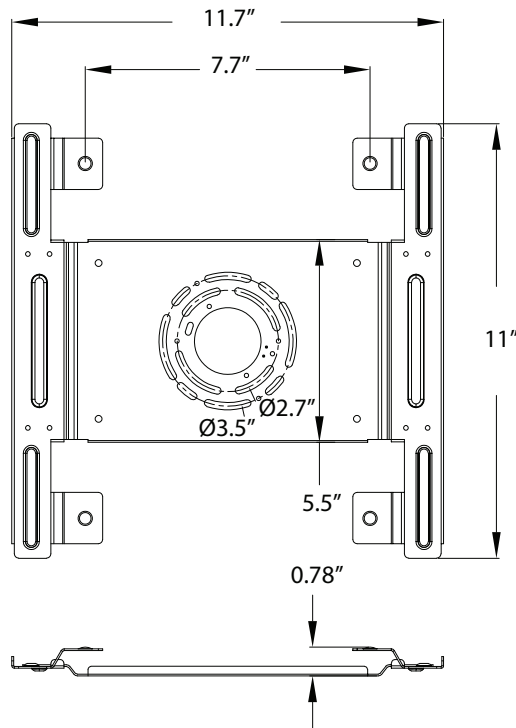
Five-year warranty for parts and components. (Labor not included)

LISTINGS

ETL - Listed for Feed Through Wiring.

Listed for Energy Star, California Title 24 compliant

SURFACE MOUNT PLATE



Example: **12-FPL1-SM-LED-1800L-DIMTR-120-30K/40K/50K-80**

12	FPL1-SM	LED						
TYPE	SERIES	TYPE	LUMENS	DIMMING	VOLTAGE	CCT	CRI	EMERGENCY
12-1'X2'	FPL1-SM Surface Mount Flat Panel	LED	1800L	DIMTR - TRIAC DIMMING	120	30K/40K/50K	80	EMG-LED-G-16W-HV-FLEX

12-FPL1-SM-LED-1800L-DIMTR-120-30K-40K-50K-80

TEST NO.: **EL07252339**

INPUT WATTS: **17.4**

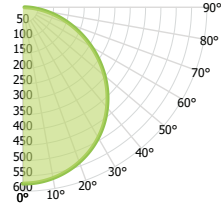
LUMENS: **1698**

EFFICACY: **98**

BEAM ANGLE: **113**

SPACING CRITERIA: **1.26 x 1.26**

CANDELA DISTRIBUTION



CANDELA TABLE

	0°	90°
0°	575	579
10°	566	569
20°	537	540
30°	491	491
40°	427	425
50°	348	347
60°	258	260
70°	166	170
80°	77	84
90°	5	6

LUMINANCE (cd/sq.m)

	0.00°	90.00°
0.00°	3095	3115
45.00°	2961	2947
55.00°	2852	2851
65.00°	2699	2736
75.00°	2503	2618
85.00°	2369	2666

LUMENS PER ZONE

ZONE	LUMENS
0° - 10°	58
10° - 20°	156
20° - 30°	237
30° - 40°	286
40° - 50°	296
50° - 60°	268
60° - 70°	208
70° - 80°	128
80° - 90°	44

ZONAL LUMEN SUMMARY

ZONE	UMENS	% LUMINAIRE
0° - 20°	214	13%
0° - 30°	450	27%
0° - 40°	736	43%
0° - 60°	1300	77%
0° - 80°	1636	96%
0° - 90°	1680	99%

CONE OF LIGHT

MOUNTING HEIGHT	FC AT BEAM CENTER	BEAM DIA. 0°-180°	BEAM DIA. 90°-270°
6.0 ft	16.0 fc	18.2 ft	18.0 ft
8.0 ft	9.0 fc	24.2 ft	24.0 ft
10.0 ft	5.8 fc	30.3 ft	30.0 ft
12.0 ft	4.0 fc	36.3 ft	36.0 ft
14.0 ft	2.9 fc	42.4 ft	42.0 ft
16.0 ft	2.2 fc	48.4 ft	47.9 ft
18.0 ft	1.8 fc	54.5 ft	53.9 ft
20.0 ft	1.4 fc	60.5 ft	59.9 ft

INDOOR COEFFICIENTS OF UTILIZATION

pf	20%																10%				0%			
pc	80%				70%				50%				30%				10%				0%			
pw	70%	50%	30%	10%	70%	50%	30%	10%	70%	50%	30%	10%	70%	50%	30%	10%	70%	50%	30%	10%	70%	50%	30%	10%
0	119	119	119	119	116	116	116	116	110	110	110	106	106	106	106	101	101	101	101	99	99	99	99	99
1	108	103	99	95	105	101	97	93	96	93	90	92	89	87	88	86	84	84	82	82	82	82	82	82
2	98	90	83	77	95	88	81	76	84	78	74	80	76	72	77	73	70	68	68	68	68	68	68	68
3	89	79	70	64	87	77	69	63	74	67	62	71	65	60	68	63	59	57	57	57	57	57	57	57
4	82	70	61	54	79	68	60	53	65	58	52	63	57	52	61	55	51	49	49	49	49	49	49	49
5	75	62	53	46	73	61	52	46	59	51	45	56	50	45	55	49	44	42	42	42	42	42	42	42
6	69	56	47	40	67	55	46	40	53	45	40	51	44	39	49	43	39	37	37	37	37	37	37	37
7	64	51	42	36	62	50	41	35	48	41	35	47	40	35	45	39	34	32	32	32	32	32	32	32
8	60	46	38	32	58	45	37	32	44	37	31	43	36	31	41	35	31	29	29	29	29	29	29	29
9	56	42	34	29	54	42	34	28	41	33	28	39	33	28	38	32	28	26	26	26	26	26	26	26
10	52	39	31	26	51	39	31	26	37	30	26	36	30	25	36	30	25	23	23	23	23	23	23	23

MOUNTING



Pancake J-Box (Metal)



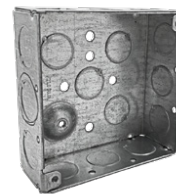
3.5" Round (Plastic)



4" Square (Plastic)



4" Octagonal (Metal)



4" Square (Metal)



Fire Rated J-Box

Note: A 2-1/8" deep octagon junction box is recommended for through circuit wiring applications.