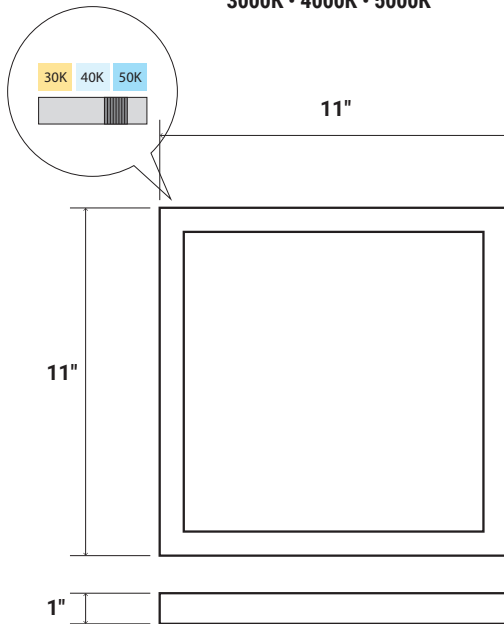




**EASY 3 COLORS
SELECCTOR**
3000K • 4000K • 5000K



NOMINAL LUMENS	DELIVERED LUMENS	WATTAGE
1000	1003	10W

Based on 4000K, 85+ CRI. Actual wattage may vary +/- 5%

FEATURES

This fully luminous LED flat panel delivers exceptional performance and aesthetically pleasing optics, optimizing shallow plenum spaces. It offers a range of dimming, lumen and Multi-CCT options. Perfect for surface mounted installations, it's an ideal choice for commercial office space, retail merchandising, educational, and healthcare facilities.

LUMENS	1000L
CCT	30K/40K/50K
CRI	80+
COLOR QUALITY	3 Step MacAdam Ellipse
MOUNTING	Ceiling Mount
DIMMING & CONTROL	DIMTR (Triac) Forward Phase
EMERGENCY	25W high voltage inverter (remote)
WORKING TEMPERATURE	-40°C (-40°F) to +40°C (+104°F)
LIFETIME	L70 at 60,000Hrs
PHOTOMETRIC TESTS	In Accordance with IES LM79-08, LM80 and TM-30, TM-21



OPTICAL SYSTEM

The proprietary optical system utilizes a unique combination of reflective and refractive optical components to achieve a uniform, aesthetically pleasing appearance. Use of a light guide plate creates even, glare-free illumination, while maintaining high efficiency.

CONSTRUCTION

Heavy duty 20-gauge cold rolled steel back panel and aluminum frame, post-painted and engineered for maximum strength and extended life. All corners interlock to prevent aesthetic damage to the luminaire, with sides and corners uniformly turned in and hemmed to remove sharp edges for safe handling and easy installation.

FINISH

Post-painted with a 93% reflective white coat to improve luminaire efficacy, with all body components seamlessly interlocked for added structural strength.

MOUNTING

Surface mounting. Attach to the ceiling using mountin plate to the J-box. Easy plug in connectors (Included) for easy replacement or servicing.

DRIVER ELECTRICAL INFORMATION

Powered by high-quality constant-current power LED drivers which are rated for 50 to 60Hz at 120V input.

DIMMING & DRIVER INFORMATION

DIMTR - Triac & Electronic low voltage dimming. Available in 120V only.

WARRANTY

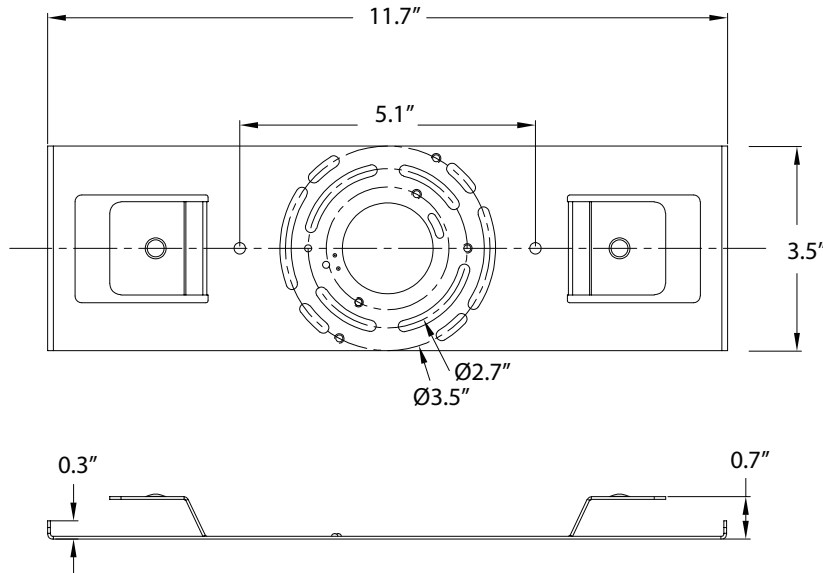
Five-year warranty for parts and components. (Labor not included)

LISTINGS

ETL - Listed for Feed Through Wiring.

Listed for Energy Star, California Title 24 compliant

SURFACE MOUNT PLATE



Example: **11-FPL1-SM-LED-1000L-DIMTR-120-30K/40K/50K-80**

11	FPL1-SM	LED						
TYPE	SERIES	TYPE	LUMENS	DIMMING	VOLTAGE	CCT	CRI	EMERGENCY
11-1'X1'	FPL1-SM Surface Mount Flat Panel	LED	1000L	DIMTR - TRIAC DIMMING	120	30K/40K/50K	80	EMG-LED-G-16W-HV-FLEX