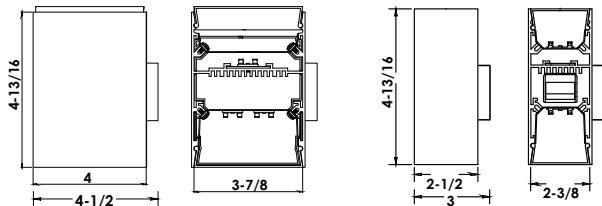
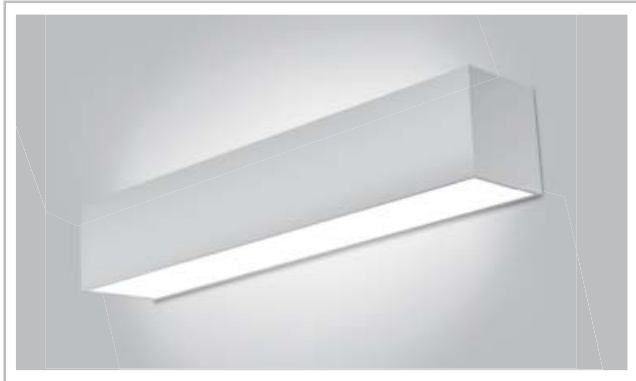
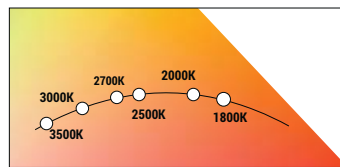
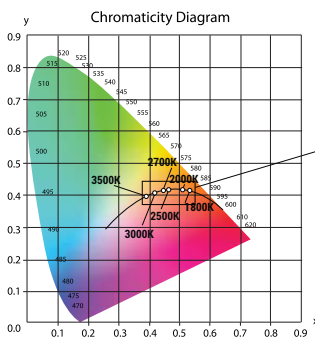


# OLS-WDI-LED

## LED ARCHITECTURAL WALL MOUNT LINEAR DIRECT/INDIRECT SYSTEM



### Elite Lighting's Architectural Lighting Luminaires with Black Body Technology mimic traditional Halogen dimming to help create a warm ambiance.



Black Body Dimming Color temperature warms from 3500K - 1800K while staying on the Black Body Locus when dimming

**APPLICATION:** Ambient lighting for glare-free, smooth illumination ideal for institutional, commercial and retail application.

#### PRODUCT FEATURES:

- Direct/indirect of 500L, 750L or 1000L lumens per ft. uplight and 500L, 750L or 1000L lumens per ft. downlight
- Standard length 2', 4' and 8'
- Aperture width include 2" and 4"
- Rigid aluminum extrusion made out of T6063-T5 aluminum, die cast aluminum end caps
- Optical system offers high efficiency LED light that passes through a smooth acrylic lens for optimal distribution patterns, thus creating a glare-free and even distribution for your application
- Life tested to 50,000 hours of operation to L70
- Tested to LM-79 and LM-80 standards
- Full ability to tandem mount for continuous run application complete with easy quick connects
- Also available in recessed and wall mount

**PERFORMANCE** - Operating system delivers 500, 750, or 1000 lumens per ft. uplight and 500L, 750L or 1000L lumens per ft. downlight. All Warm Dim system maintain a CRI of 85+ across the dimming range of 3500K to 1800K and are binned to within 3 MacAdam ellipse. Elite's highly selective LED diodes produce zero ultraviolet and virtually no infrared light.

**OPTICS** - Fabricated of 20 gauge aluminum. Post painted finish with 95% reflective premium paint.

**DIFFUSER** - Smooth white frosted acrylic lens for glare free light and even distribution. Precision cut, snap in design. 4" lens 3.858" width 2" lens 2.361" width.

**FABRICATION** - Available in 2" and 4" aperture width. Rigid design made with extruded aluminum ensures longevity and endurance.

**FINISH** - Aluminum electrostatic painted in White, Silver or custom colors.

**MOUNTING** - High quality aluminum wall brackets that have undergone stringent safety testing. Can be mounted in horizontal or vertical configuration. Consult factory for additional mounting options.

**ENDCAPS** - Rigid aluminum extrusion made out of T6063-T5 aluminum, diecast end caps.

**STANDARD LENGTHS** - All luminaires are supplied in nominal lengths to ensure even illumination. Runs and configurations are available in app. 2', 4' and 8' increments.

**CRM INSTALLATION** - For continuous row mounting, the first fixture in the row will always be the power supplies feed. After plugging in the male and female harnesses, which are supplied with each fixture, they will easily slid together, then secured with two screws from opposite direction in the connecting brackets. This allows for fixtures to be continuously connected with only removing the lenses. There is no need to remove any other parts in the fixture to install the continuous run.

**ELECTRICAL** - Powered by high-quality constant-current power LED drivers which are rated for 50 to 60Hz at 120-277V input, produce less than 20% THD, and have a power factor of .90 to 1.00. Male and Female 18-gauge 6 wire plug connectors are included with every fixture to allow for simple hassle-free continuous wiring. Each fixture must be installed male to female.

**OPTIONS** - Fixtures may be shipped pre-installed with daylight harvesting controls, occupancy sensors, and/or power pack. Available manufacturer options include Lutron, Leviton, Wattstopper, EnOcean, Enlighted, Philips and others. **Consult factory for details.**

**WARM DIM (SMART DIM) ARCHITECTURAL LIGHTING**

**SMART DIM** - Warm Dim with Smart Dim technology mimics traditional incandescent halogen lighting through dimming. Using Warm Dim, luminaires dim smoothly from 3500K to 1800K. Warm Dim shifts smoothly over the black body radiator curve as the light dims you move into the rich amber tones that encourages relaxation. It is ideal for hospitality, architectural as well as residential applications, all while maintaining high lumen output for the most stringent energy codes today's legislation requires. Warm Dim comes paired with high CRI of 85+ and superior lumen output.

**WARM DIM WITH SMART DIM TECHNOLOGY CAN BE SUPPLIED WITH A VARIETY OF DIMMING AND CONTROL PROTOCOLS 0-10V, DMX, DALI, OR LUTRON ECOSYSTEM AND CAN BE DIMMED DOWN TO 1% OF INITIAL LIGHT OUTPUT:**

**DIMTR** (Triac & Electronic Low Voltage Dimming in 120V only) Triac & Electronic Low Voltage dimming driver available when ordered with the following options (DIMTR-120) and only available in 120V.

**DIM10** (0-10V 1% Dimming Standard) 0-10V driver which can be dimmed down to 1% of initial light output with a 0-10V dimmer when ordered with the following options (DIM10-120, DIM10-277).

**LUTECO** - Provided with Lutron EcoSystem driver. Compatible with Lutron GRAFIK Eye EcoSystem, Lutron Energi Saver node EcoSystem, or Lutron Quantum systems and Lutron Vive. When ordered with the following options (LUTECO).

**LUT2W**- (Lutron® Hi-Lume A-Series 2-Wire Forward Phase Control 1% Dimming in 120V). When ordered with the following options (LUT2W).

**DMX** - Compatible with Digital Multiplex Controller, Available with two options: **DMX-512**: Standard DMX Controller and **DMX-RDM**: DMX Controller with Remote Device Management.

**DALI** - Compatible with Digital Addressable Lighting Interface, available with two options: TD6 and TD8.

**EMERGENCY** - Emergency battery back-up comes pre-installed on the fixture and emergency push button is installed on the fixture for easy access and aesthetics.

**QUALITY CONTROL** - Every fixture is rigorously tested by our QC Department before shipping.

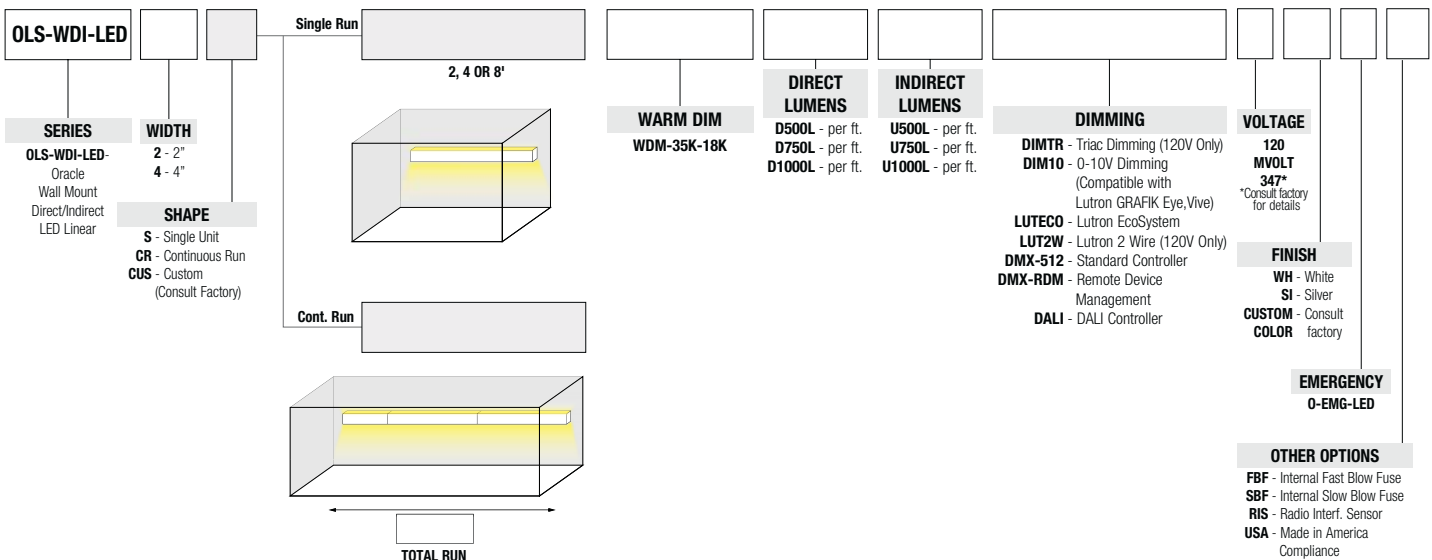
**LISTING** - c-UL-us / c-ETL-us - listed for Damp location

All LED luminaires are rated and tested to LM-79 and LM-80 standards by an independent laboratory.

**OUR WORD** - Our LED system is Life tested to ensure light output of L70 up to 110,000 hrs and L85 up to 65,000 hrs and carries a five-year carefree warranty for parts and components. (Labor not included)

**AVAILABLE IN SURFACE LINEAR DIRECT SYSTEM, RECESSED LINEAR DIRECT SYSTEM, WALL MOUNT LINEAR DIRECT/INDIRECT SYSTEM**

Ordering Information: OLS-WDI-LED-2-CR24-WDM-35K-18K-D500L-U500L-DIM10-MVOLT





Philips EasySense sensors provide luminaire-level control with Occupancy sensing, Daylight harvesting, and Field task tuning.

**Controls Installed on the Fixture**



**PHILIPS-XSR + SNS200**

Fixture will be Shipped with EasySense SNS200 Sensor installed and PHILIPS-XSR driver. Fixture May Only be Controlled with Philips Field App or Wireless Switches.



**SRB + SNS200**

Fixture Will be Shipped with EasySense SNS200 Sensor installed and PHILIPS SRB Bridge. Fixture May Only be Controlled with Philips Field App or Wireless Switches or any 0-10V. Wall Box Dimmer.



**PHILIPS-XSR + SNS200-CMP**

Fixture will be Shipped Sensor Ready with PHILIPS-XSR driver and EasySense SNS200-CMP Sensor which is Included to be Remote Mounted. Fixture May Only be Controlled with Philips Field App or Wireless Switches



**SRB + SNS200-CMP**

Fixture Will be Shipped Sensor Ready with PHILIPS SRB Bridge and EasySense SNS200-CMP Sensor which is Included to be Remote Mounted. Fixture May Only be Controlled with Philips Field App or Wireless Switches or any 0-10V. Wall Box Dimmer.



**SRB**

Fixture will be Shipped Sensor Ready with SRB Bridge. Fixture will be Compatible with EasySense Sensor SNS200-CMP which can be Added in the Field for Remote Mounting. Fixture May Only be Controlled with Philips Field App or Wireless Switches or any 0-10V. Wall Box Dimmer.

**Controls Provided by Philips**



**ZBT-S1AWH**

**ZBT-S2AWH**

Ilumra Wireless Switches



Philips Field App



Enlighted Smart Sensors features digital motion, ambient light, and temperature sensing, the device provides autonomous fixture-level control

**Controls Installed on the Fixture**



**PHILIPS-XSR + FS-D22**

Fixture Will be Shipped with Enlighted FS-D22 Two-wire sensor Sensor installed and PHILIPS-XSR driver. Fixture May be Controlled with Enlighted Gateway, Energy Manager or Enlighted Room Controller WS-2-00



**CU-E3-1R + SU-4E-00**

Fixture Will be Shipped with Enlighted SU-4E-00 Sensor installed and Enlighted CU-E3-1R Control Unit Power Pack. Fixture May be Controlled with Enlighted Gateway, Energy Manager or Enlighted Room Controller WS-2-00



**CU-E3-1R**

Fixture Will be Shipped Sensor Ready with Enlighted CU-E3-1R Control Unit Power Pack. Fixture will be compatible with Enlighted SU-4E-00 Sensor which can be Added in the Field Remote Mounting. Fixture May be Controlled with Enlighted Gateway, Energy Manager or Enlighted Room Controller WS-2-00



**PHILIPS-XSR**

Fixture Will be Shipped Sensor Ready with PHILIPS-XSR driver. Fixtures will be compatible with Enlighted CS-D2 Two-wire sensor which can be Added in the Field for Remote Mounting. Fixture May be Controlled with Enlighted Gateway, Energy Manager or Enlighted Room Controller WS-2-00.

**Controls Provided by Enlighted**



**Gateway**

**Switch**



Programmable with Laptop



PoE Network Switch



Energy Manager



**Controls Installed on the Fixture**



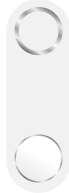
**FCJS-010**  
Individual  
Fixture Control

Fixture Will be Shipped LUTRON VIVE Enabled with LUTRON FCJS-010 0-10V Control Module Installed on the Fixture. Fixtures will be compatible with Lutron FC-SENSOR Occupancy/Daylight Sensor or FC-VSENSOR Vacancy/Daylight Sensor which can be Added in the Field for Remote Mounting. Fixture May be Controlled with any Vive control systems. Fixtures must be ordered with a 0-10V. Driver.



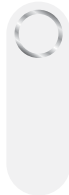
**FCJS-ECO**  
Individual  
Fixture Control

Fixture Will be Shipped LUTRON VIVE Enabled with LUTRON FCJS-ECO EcoSystem Control Module Installed on the Fixture. Fixtures will be compatible with Lutron FC-SENSOR Occupancy/Daylight Sensor or FC-VSENSOR Vacancy/Daylight Sensor which can be Added in the Field for Remote Mounting. Fixture May be Controlled with any Vive control systems. Fixtures must be ordered with a Lutron Driver.



**DFCSJ-OEM-OCC**

Fixture Will be Shipped LUTRON VIVE Enabled with DFCSJ-OEM-OCC\* Vive Integral Fixture Control (with Sensing) Installed on the Fixture. Fixture May be Controlled with any Vive control systems. Fixtures must be ordered with a 0-10V. Driver



**DFCSJ-OEM-RF**

Fixture Will be Shipped LUTRON VIVE Enabled with LUTRON DFCSJ-OEM-RF\* Vive Integral Fixture Control (RF Only) Installed on the Fixture. Fixture May be Controlled with any Vive control systems. Fixtures must be ordered with a 0-10V. Driver.

**Controls Provided by Lutron**



Vive Wireless Hub



DayLight  
Sensor



Ceiling Mount  
Occupancy/Daylight  
Sensor



Ceiling Mount  
Occupancy Sensor



Pico  
Remote



Wall Mount  
Switch



Wall Mount  
Occupancy Sensor



Lutron App



Fixture will be shipped with Leviton ZL027-N0W power control module installed on the fixture. Fixtures will be compatible with Leviton ZL00J-D0W sensor control module which can be added in the field for remote mounting. Fixture must be controlled with Leviton Intellect Keypad Room Controller, or Leviton Neuron App.



**ZL027-N0W**  
Power control module



**ZL00J-D0W**  
Sensor control module

**Leviton Keypad**



**ZLDNK-1W**



**ZLDNK-2W**



**ZLDNK-4W**



**ZLDNK-8W**

Intellect™ Keypad Room  
Controller (Required)

**Leviton App**



Neuron App

## EASYFIT

by EnOcean

### Controls Options to be Installed on the Fixture

Self-powered sensors and switches, combined with LED fixture controllers and a commissioning tool, permit easy configuration, intelligent local control, and seamless integration into building automation systems.



**LEDRU**  
LED Relay Zone  
Controller 0-10V



**LEDDU**  
LED Zone  
Controller 0-10V

### Controls Provided by EnOcean



**EOSCU**  
Occupancy Sensor  
Ceiling Mount



**EOSWU**  
Occupancy Sensor  
Wall Mount



**ELLSU**  
Daylight Sensor  
Ceiling Mount



**ESRPU/EDRPU**  
Wall Switches



**LEVITON**  
Wall Switches  
902 MHz category



**NWC 300U**  
Navigan Wireless  
Commissioner

## legrand

WATTSTOPPER®

### Controls Installed on the Fixture



#### LMFC-011

Fixture Will be Shipped Legrand Wattstopper DLM Enabled with LMFC-011 Module Controller Installed on the Fixture. Fixtures will be compatible with Legrand Wattstopper DLM Load Controllers, DLM Sensors, DLM Switches, DLM Remote Control, and DLM Configuration tool.

#### Switches



LMMSW-105 LMMDM-101

#### Remote



LMRH-105

#### Configuration tool



LMCT-100-2

#### Plug Load Controllers



LMPL-101 LMPL-201

#### Sensors



LMDC-100 LMLS-400 LMLS-500



#### FD-301

Fixture Will be Shipped with Legrand Wattstopper FD-301 (Integrated Daylight Dimming Photosensor) installed and FS-PP-V2 Fixture Power Pack.



FS-PP-V2



#### FSP-202

Fixture Will be Shipped with Legrand Wattstopper FSP-202 (multi-level control based on motion and/or daylight contribution) installed.



#### FSP-212

Fixture Will be Shipped with Legrand Wattstopper FSP-212 (multi-level control based on motion and/or daylight contribution) installed.