



LEVITON INTELLECT™ INTELLIGENT FIXTURE CONTROL SYSTEM



***THE MOST COMPREHENSIVE LINE
OF LIGHTING FIXTURES WITH CONTROLS IN NORTH AMERICA***





Since its inception in the early 1900's, Leviton has been a major player in the electrical industry. Now, with its continued development of lighting control devices, Elite Lighting is incorporating Leviton's lighting control sensors into their products. Included in Elite's line of architectural products, the Leviton Intellect™ Sensor Control Module (SCM) is designed for mounting directly into the Elite fixture. With a small profile, the sensor seamlessly blends in with the fixture, so as not to distract from the fixture design.

The system works in conjunction with a maximum 8 button multi-function keypad and room controller for maximum lighting control flexibility. The power control module and sensor control module are embedded within the fixture housing. Lighting fixtures are controlled via a wall-mounted keypad controller through a wireless mesh network, or by wireless communication through a Bluetooth enabled Neuron App. This enables the user a simple, and understandable means of lighting control.

With a host of options, the Elite fixtures are the ideal companions to the Leviton control system, providing unlimited sources for any lighting application.

For classroom or open office environments, the 'OD1V-LED' recessed series, or the 'ASI-LED' linear direct, or direct/indirect series provides a glare-free source of illumination. For hospitality or high-end residential applications, the 'HH-LED' and 'ER3-LED' recessed downlight series are the perfect compliment to any architectural space. To accentuate high-end retail spaces, utilization of the 'FC2-LED' combo light series is the perfect solution.

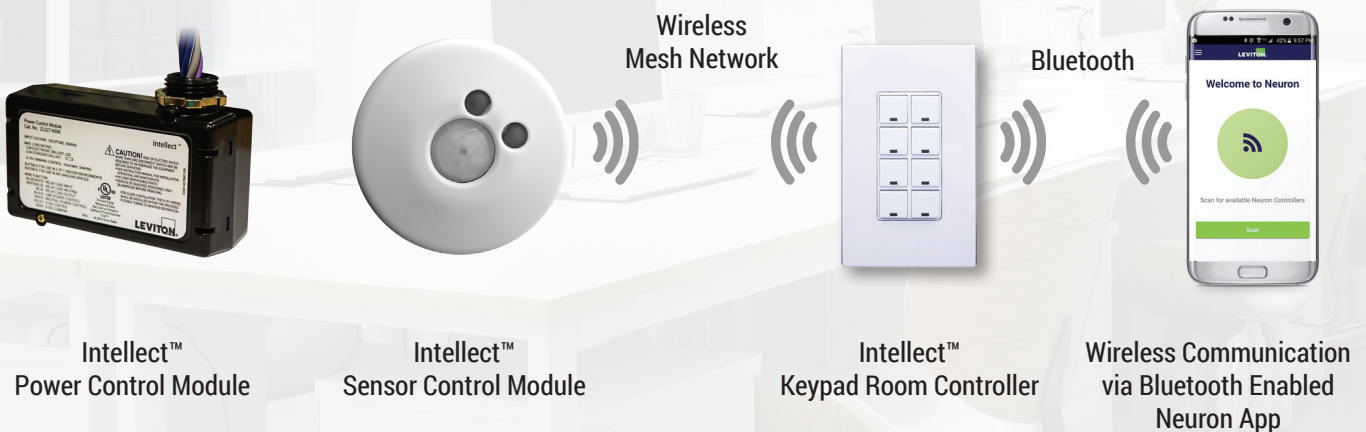
Whatever the application, Elite Lighting's wide range of products, paired with the Leviton control sensors provide many options for various types of projects.

Powering Next Generation Lighting

Today's leading-edge lighting controls require more than just a switch that turns lighting on and off. Leviton Intellect technology delivers a simple, yet advanced room control solution that can meet the unique lighting needs for each space. Intellect provides customers with high performance lighting control strategies while meeting energy code requirements and qualifying for rebates.

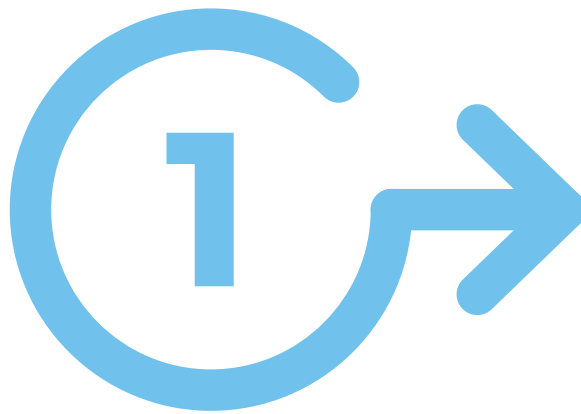
This simple solution only requires the installation of a Intellect Sensor Control Module, the Intellect Power Control Module and Intellect Keypad Room Controller. Use the Bluetooth®-enabled Neuron App to configure, monitor, and control the system.

Intellect Wireless Communications



HOW DOES IT WORK?

Elite Lighting is excited to introduce the Leviton Intellect™ Intelligent Fixture Control System. Now you can develop any type of project that involves a control system using the Elite Lighting architectural line of products in addition to the Leviton Intellect™ system to achieve today's standards. After you decide what luminaire you will be using in your project you can select the control system that best fits you. Elite Lighting will ship fixtures with the corresponding control system pre-installed and ready to be configured in the workplace. Just visit our website (www.iuseelite.com) and download the specification sheet with the technical information of the luminaire and the available control system for the selected fixture. Don't waste more time and money looking into a control system for your new project, Elite Lighting now offers **THE MOST COMPREHENSIVE LINE OF LIGHTING FIXTURES WITH CONTROLS IN NORTH AMERICA**

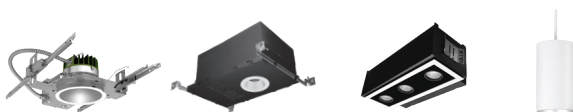


FIRST STEP

CHOOSE YOUR FIXTURES

Elite Lighting has a complete line of architectural lighting products to give you the freedom to design any project.

DOWNLIGHTING | SMALL APERTURE | COMBO LIGHTING | CYLINDER



ARCHITECTURAL SLOT | SUSPENDED | RECESSED LINEAR | SURFACE MOUNT



www.iuseelite.com



SECOND STEP

SELECT YOUR CONTROLS

Fixture will be shipped with pre-installed Leviton sensor and power control module or will ship separate to be installed in the ceiling.



Intellect™ Sensor
Control Module



Intellect™ Power
Control Module



THIRD STEP

CHOOSE YOUR SWITCH

After selecting the control system, choose how you will control your fixtures using the corresponding wall mount Keypad.

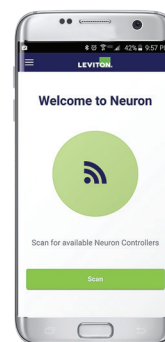


**Intellect™ Keypad Room Controller
(Required)**

FOURTH STEP

SET UP THE CONTROL SYSTEM

Configure your Leviton Control System using the Neuron App by Leviton.

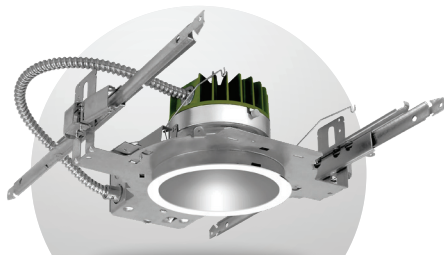


Neuron App

Elite Products available with Leviton Control System

Choose from the Elite Lighting complete line of architectural products

1



4", 5", 6", 8" & 10"
LED Architectural Downlight



LED Architectural Cylinders



Small Aperture
Specification Downlighting



LED Combo Lighting



LED Linear Slot



LED Suspended Linear



LED Surface Linear Lighting



LED Recessed Linear



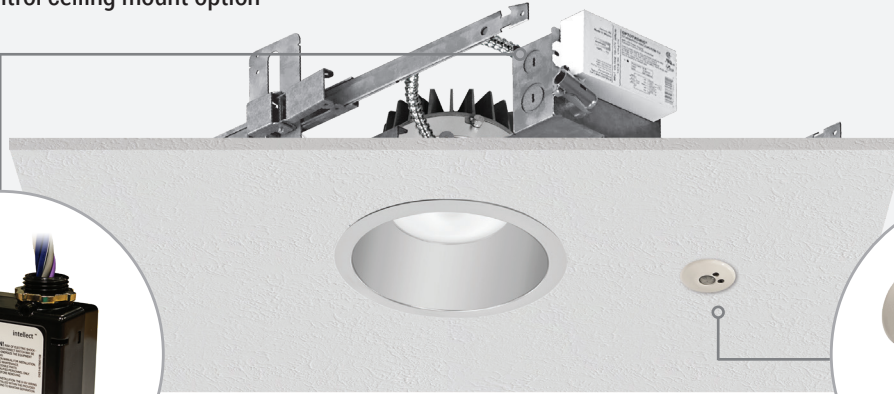
LED Flat Panels

2

Elite Lighting + Leviton Control System

Select the control system

Downlight Fixtures can be shipped with the Leviton control ceiling mount option



Intellect™ Power Control Module



Intellect™ Sensor Control Module

Linear fixture will ship with the Leviton sensor & power control module pre-installed



Intellect™ Power Control Module



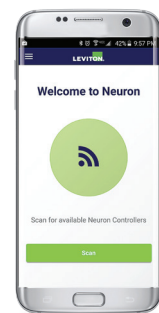
Intellect™ Sensor Control Module

Wireless Communication
via Bluetooth Enabled
Neuron App

Lighting fixtures will be controlled using
the Intellect™ Keypad Room Controller or
the Neuron Room App by Leviton



Intellect™ Keypad Room Controller (Required)



Neuron App

ELITE Recessed Series + Leviton Wireless Control



**Intellect™ Sensor
Control Module**



**Intellect™ Power
Control Module**

elite
LED LIGHTING

LEVITON®

Elite Lighting Luminaries now can be controlled
by the Intellect™ Intelligent Fixture Control System



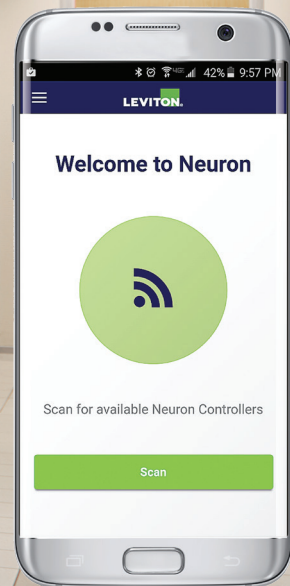
OD1V-LED
LED Recessed Volumetric



Intellect™ Keypad
Room Controller



Wireless Communication
via Bluetooth Enabled
Neuron App



Neuron App

Intellect™ Sensor Control Module

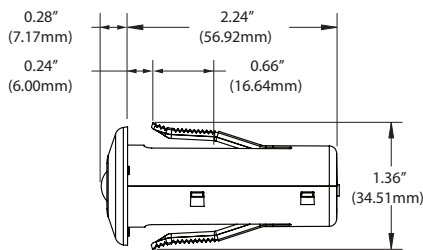
2



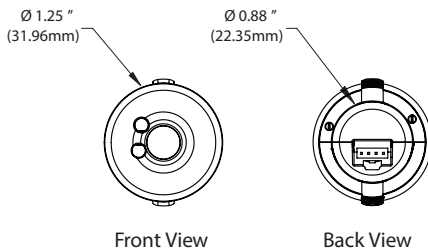
The Leviton Intellect™ Sensor Control Module (SCM) is designed to be mounted directly into lighting fixtures for use in an Intellect-enabled Intelligent Fixture Control System. The SCM integrates PIR occupancy sensing and photocell technology in a single compact unit. Integrate with downlights, track fixtures and other general lighting to create an advanced intelligent lighting system that complies with energy codes.

Compliant with DesignLights Consortium (DLC) specifications for Advanced Lighting Controls (certification pending), the Intellect™ Intelligent Fixture Control System is made up of three interchangeable components. A range of options are available to meet the specific needs of each lighting fixture type.

ZL00J-DOW



Side View



Front View

Back View



Features & Benefits

Compliant with DesignLights Consortium (DLC) specifications for Advanced Lighting Controls (certification pending).

Integrates wireless occupancy, vacancy and light level sensing technology into fixtures.

Creates Intellect-enabled light fixtures.

Primary fixture types: downlights, linear fixtures with deep cavities (direct/indirect, cylinders).

Occupancy and vacancy detection: PIR sensor, spacing to mounting height of 1:1 up to 12'

Light level detection via light sensor (photocell).

Connects to any Intellect power supply or Power Control Module.

Fully digital sensors, configurable across network—sensitivity, time out, lighting target level, occupancy/vacancy mode.

NOTES

Range up to 75 feet between nodes

Specification

ELECTRICAL

Input Power: Powered from Intellect Power Control Module

Wireless: Lumina RF, IEEE 802.15.4, 2.4 GHz mesh network

Range: Up to 75' between nodes

ENVIRONMENTAL

Operating Temperature Range: 32° to 122° F (0° to 50° C)

Storage Temperature Range: -4° to 185° F (-20° to 85° C)

Relative Humidity: 0 to 90% non-condensing, for indoor use only

Mounting Height: 8-12'

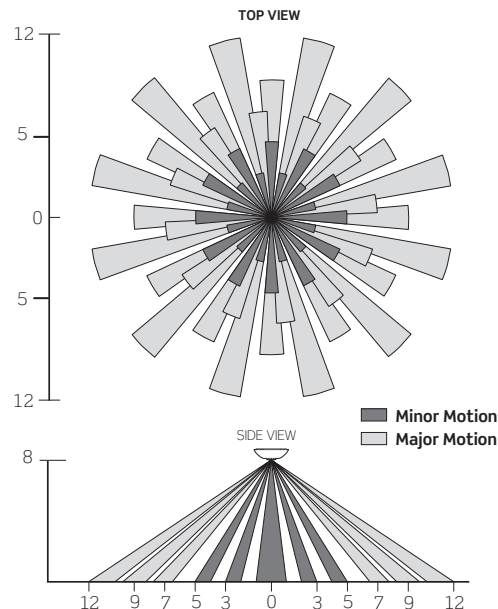
OTHER

Intellect System Listings: Can be used to comply with IECC, ASHRAE 90.1, and 2016 Title 24, Part 6 occupancy/vacancy sensing, 0-10V dimming, and daylight harvesting requirements, DLC, Advanced Lighting Controls Compliant, UL/cUL Listed, UL924, NOM Certified, RoHS 2 Compliant, and IEC61000-4-2, Complies with IEEE 802.15.4, UL916 standard for energy management equipment, UL2043 for plenum rated

Radio Certifications: FCC certified for wireless communication (U.S.), FCC ID: 2473A-PVDIM, IC Certified (Canada), IC ID: 2473A-PVDIM

Warranty: Limited 5-Year

FIELD-OF-VIEW



Intellect™ Power Control Module

2

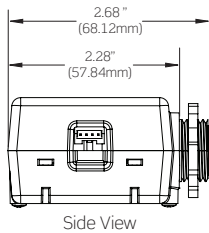


Choose Control System

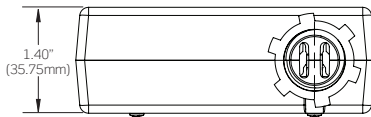


The Leviton Intellect™ Power Control Module (PCM) is designed to be mounted directly into lighting fixtures and used as a power pack in an Intellect™ Intelligent Fixture Control System. The PCM connects to the Intellect™ Sensor Control Module (SCM) via a short extension cable. Integrate with downlights, track fixtures and other general lighting to create an advanced intelligent lighting system that complies with energy codes.

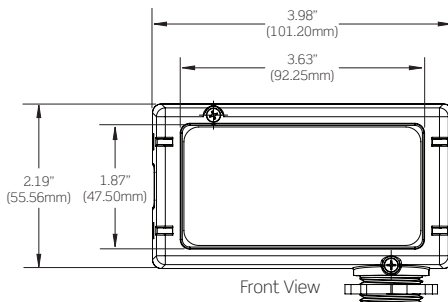
Compliant with DesignLights Consortium (DLC) specifications for Advanced Lighting Controls (certification pending), the Leviton Intellect™ Intelligent Fixture Control System is made up of three interchangeable components. A range of options are available to meet the specific needs of each lighting fixture type.



Side View



Bottom View



Front View

ZL027-NOW
ZL027-NOW



Features & Benefits

Compliant with DesignLights Consortium (DLC) specifications for Advanced Lighting Controls (certification pending)

0-10V and power control of Intellect-enabled fixtures

Interface to Intellect Sensor Control Module

Create Intellect-enabled lighting fixtures

Primary fixture types: switching only, or 0-10V control where a knockout power pack is desired

120-277V, 50/60 Hz power output

3/4" nipple and locknut for installation into a standard 3/4" knockout

All terminations on pigtailed

Emergency control—UL924 rated, monitors local normal power through the control input and ensures device is on upon normal power failure

0-10V control and power relay rated for all common load types—LED, fluorescent, Tungsten, resistive, motor loads

Specification

ELECTRICAL

Power Input: 2.5A, 120-277VAC, 50/60 Hz

Output: 4A: Ballast, electronic ballast, LED, Tungsten, resistive, general purpose
Motors: 1/8HP at 120V, 1/16HP at 277V

Control: 0-10V, 10mA Sinking, ANSI C82.11, Appendix E2

Power Monitoring: KWH, KW, Power Factor, Voltage, Current, KVAR, KVARH, 3% accuracy

ENVIRONMENTAL

Operating Temperature Range: 32° to 167° F (0° to 75° C)

Storage Temperature Range: -4° to 185° F (-20° to 85° C)

Relative Humidity: 0 to 90% non-condensing, for indoor use only

OTHER

Intellect System Listings: Can be used to comply with IECC, ASHRAE 90.1, and 2016 Title 24, Part 6 occupancy/vacancy sensing, 0-10V dimming, and daylight harvesting requirements, DLC, Advanced Lighting Controls Compliant, UL/cUL Listed, UL924, NOM Certified, RoHS 2 Compliant, and IEC61000-4-2, Complies with IEEE 802.15.4, UL916 standard for energy management equipment, UL2043 for plenum rated, NEMA 410 compliant

Radio Certifications: FCC certified for wireless communication (U.S.), FCC ID: 2473A-PVDIM, IC Certified (Canada), IC ID: 2473A-PVDIM

Warranty: Limited 5-Year

Intellect™ RF Keypad Room Controller



REQUIRED

3

The Leviton Intellect™ Decora® Keypad Room Controller (ZLDNK) is the primary user interface in an Intellect-enabled Intelligent Fixture Control System, combining both familiar pushbutton control and energy management business logic into line voltage powered wireless communication devices. The Intellect™ Keypad manages a room by coordinating activities of all devices within the space.

The Keypad also provides the primary interface between the smartphone/tablet commissioning and control device and the Intellect system. The Keypad integrates with Intellect-enabled downlights, track fixtures, troffers, and other lighting fixture types to create a simple but advanced intelligent lighting system that can be used to comply with IECC, ASHRAE 90.1, and 2016 Title 24, Part 6 occupancy/vacancy sensing, 0-10V dimming, and daylight harvesting requirements. Dimming, multi-zone daylight harvesting, occupancy and vacancy sensing, manual control, and scene control are configured using the Bluetooth®-enabled Leviton Neuron™ app. Wirelessly configure, control, monitor and provision the Intellect™ System using the Bluetooth®-enabled Neuron app designed for an Android or iOS smart phone and other compatible devices within a 30' range.



ZLDNK-8W



Features & Benefits

Compliant with DesignLights Consortium (DLC) specifications for Advanced Lighting Controls (certification pending)

0-10V and power control of Intellect-enabled fixtures

Interface to Intellect Sensor Control Module

Create Intellect-enabled lighting fixtures

Primary fixture types: switching only, or 0-10V control where a knockout power pack is desired

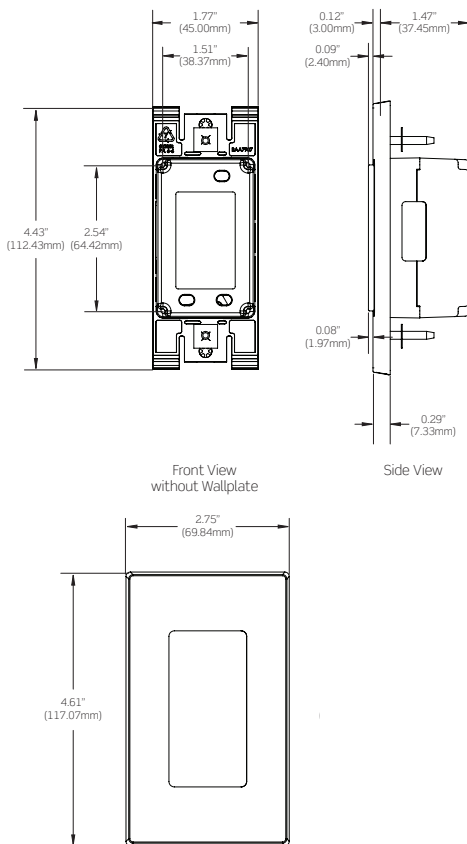
120-277V, 50/60 Hz power output

3/4" nipple and locknut for installation into a standard 3/4" knockout

All terminations on pigtails

Emergency control—UL924 rated, monitors local normal power through the control input and ensures device is on upon normal power failure

0-10V control and power relay rated for all common load types—LED, fluorescent, Tungsten, resistive, motor loads



Specification

ELECTRICAL

Input Voltage: 120-230-277VAC , 50/60 Hz, 40mA

Output: None—wireless communication only

Communication: 2.4 GHz wireless mesh network
Up to 75' between Lumina RF devices, mesh network—all devices are repeaters
Up to 30' between Keypad and Bluetooth phone or tablet
75' between Keypad and first fixtures

Connections: 16 AWG (Power connections)

ENVIRONMENTAL

Operating Temperature Range: 32° to 167° F (0° to 75° C)

Storage Temperature Range: -4° to 185° F (-20° to 85° C)

Relative Humidity: 0 to 90% non-condensing, for indoor use only

OTHER

Intellect System Listings: Can be used to comply with IECC, ASHRAE 90.1, and 2016 Title 24, Part 6 occupancy/vacancy sensing, 0-10V dimming, and daylight harvesting requirements, DLC, Advanced Lighting Controls Compliant, UL/cUL Listed, UL924, NOM Certified, RoHS 2 Compliant, and IEC61000-4-2, Complies with IEEE 802.15.4, UL916 standard for energy management equipment, UL2043 for plenum rated, NEMA 410 compliant

Radio Certifications: FCC certified for wireless communication (U.S.), FCC ID: 2473A-PVDIM, IC Certified (Canada), IC ID: 2473A-PVDIM

Warranty: Limited 5-Year

Other Intellect™ Keypad Room Controller Options



ZLDNK-1W



ZLDNK-2W



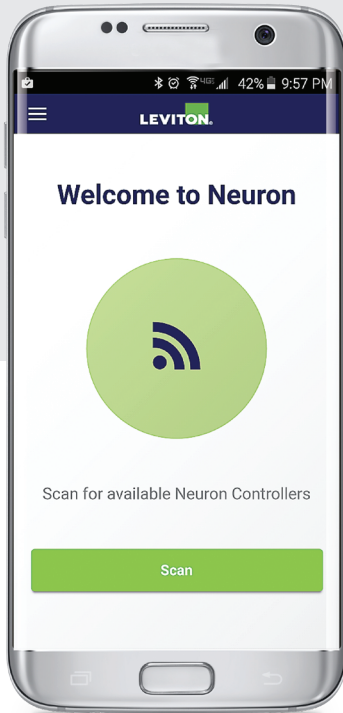
ZLDNK-4W

Leviton Neuron App

4



Download the app



NEURON

The only setup tool needed, the Neuron App can be used to interact with any of Leviton's Intellect™ Keypad Room Controllers. The App wirelessly communicates to the Keypad Room Controller via Bluetooth to configure, control, and monitor an Intellect™ Intelligent Fixture Control System. It enables dimming, occupancy/vacancy sensing, multi-zone daylight harvesting, manual control, and scene capabilities. Application is appropriate to be used by installers, building maintainers, and end-users.

Features

- Identify Master Keypad Room Controller
- Create Master Room Controller
- Name Room
- Enroll , add and verify devices
- Create Groups
- Group Programming
- Create Scenes
- Scenes Programming
- Program Keypad(s)
- Keypad Programming
- Configure Room Settings



Elite Lighting and Intellect™ Intelligent Fixture Control System Diagram

- 1) Simply install the Elite equipped Intellect-enabled LED fixture
- 2) Install the Keypad Room Controller
- 3) Configure the system with the Leviton Neuron App and you're done!



1 ELITE Downlight Series + Leviton Wireless Control



HH6-LED
LED Architectural
Downlight



ZL00J-D0W
Sensor control module



ZL027-N0W
Power control module



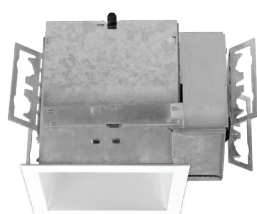
ZLDNK-8W
Intellect™ Keypad Room
Controller

LED Architectural Downlight + Control

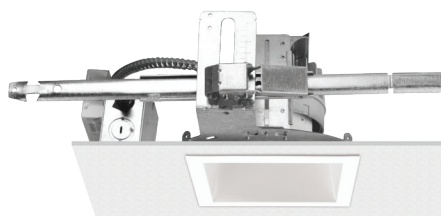


LUMEN OUTPUT	Up to 8000 Lumens	OPTIC	Wide, Medium and Narrow Distribution
CRI	90+ , 98+	WARRANTY	5 Years
COLOR QUALITY	3-Step MacAdam Ellipse	SHAPE	Square and Round
CCT	27K, 30K, 35K, 40K, 50K	STYLE	Downlight, Wall wash, Adjustable

LED SQUARE ARCHITECTURAL DOWNLIGHT

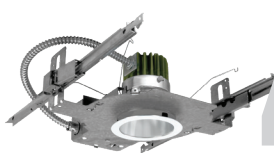


4"
HH4SQ-LED
2000 LUMENS



6"
HH6SQ-LED
4000 LUMENS

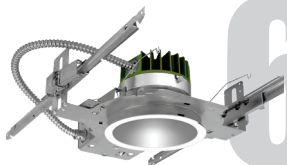
LED ROUND ARCHITECTURAL DOWNLIGHT



4"
HH4-LED
2000 LUMENS



5"
HH5-LED
4000 LUMENS



6"
HH6SQ-LED
4000 LUMENS



8"
HH8-LED
8000 LUMENS

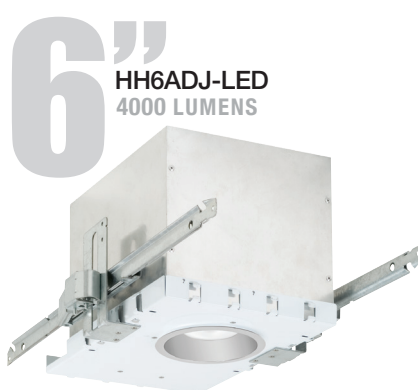


10"
HH10-LED
8000 LUMENS

LED ADJUSTABLE & IC ARCHITECTURAL DOWNLIGHT



4"
HH4ADJ-LED
2000 LUMENS



6"
HH6ADJ-LED
4000 LUMENS










6"
HH6IC-LED
2000 LUMENS

**Ceiling access to fixtures required*

Specification

SERIES:	HH4SQ-LED, HH6SQ-LED HH4-LED, HH5-LED, HH6-LED, HH8-LED, HH10-LED HH4ADJ-LED, HH6ADJ-LED, HH6IC-LED
LUMEN PACKAGES:	900 LUMENS 1200 LUMENS 1500 LUMENS 2000 LUMENS 3000 LUMENS 4000 LUMENS 6000 LUMENS 8000 LUMENS
DRIVERS:	DIM10 (0-10V 1% Dimming Standard)
VOLTAGE:	120 277
DISTRIBUTIONS:	WD (70°-75°) - Wide Distribution MD(55°-60°) - Medium Distribution ND(35°-40°) - Narrow Distribution
CCT:	27K, 30K, 35K, 40K, 50K
EMERGENCY:	EMG-LED INTG-EMG-LED
OPTIONS:	CP-Chicago Plenum
LISTING:	c-UL-us - listed for Wet Location if used with HH6-6501 Trim. c-UL-us - listed for feed Through Wiring. LM79 / LM80 U.S Patent No. - D685,118S CP - City of Chicago environmental air (CCEA) marking for plenum applications.
WARRANTY:	5 year limited warranty. As a system, we stand behind our entire products from housing to bar hangers.

Please visit spec sheet for more information at www.iuseelite.com

Controls provided by Elite Lighting		Leviton Keypad				Leviton App
						
ZL00J-D0W Sensor control module	ZL027-N0W Power control module	ZLDNK-1W	ZLDNK-2W	ZLDNK-4W	ZLDNK-8W	Neuron App
Intellect™ Keypad Room Controller						

LED Architectural Downlight + Control



Choose Fixtures

LUMEN OUTPUT	Up to 8000 Lumens	OPTIC	Wide, Medium and Narrow Distribution
CRI	85+, 90+ , 98+	WARRANTY	5 Years
COLOR QUALITY	3-Step MacAdam Ellipse	SHAPE	Round
CCT	27K, 30K, 35K, 40K, 50K	STYLE	Retrofit Downlight

LED ROUND ARCHITECTURAL RETROFIT DOWNLIGHT



Specification

SERIES: HHHJ4-LED, HHJ5-LED, HHJ6-LED
HHJ8-LED, HHJ10-LED

LUMEN PACKAGES: 900 LUMENS
1200 LUMENS
1500 LUMENS
2000 LUMENS
3000 LUMENS
4000 LUMENS
6000 LUMENS
8000 LUMENS

DRIVERS: DIM10 (0-10V 1% Dimming Standard)

VOLTAGE: 120
277

DISTRIBUTIONS: WD (70°-75°) - Wide Distribution
MD(55°-60°) - Medium Distribution
ND(35°-40°) - Narrow Distribution

CCT: 27K, 30K, 35K, 40K, 50K

EMERGENCY: EMG-LED

LISTING: c-UL-us - listed for Wet Location if used with HH10-1501 Trim.
c-UL-us - listed for feed Through Wiring. LM79 / LM80
U.S Patent No. - D685,118S

WARRANTY: 5 year limited warranty. As a system, we stand behind our entire products from housing to bar hangers.

Please visit spec sheet for more information at www.iuseelite.com

Controls provided by Elite Lighting



ZL00J-D0W

Sensor control module



ZL027-N0W

Power control module

Leviton Keypad



ZLDNK-1W



ZLDNK-2W



ZLDNK-4W



ZLDNK-8W

Intellect™ Keypad Room Controller

Leviton App



Neuron App

LED Architectural Downlight + Control



Choose Fixtures

LUMEN OUTPUT	Up to 8000 Lumens	OPTIC	Wide, Medium and Narrow Distribution
CRI	85+, 90+, 98+	WARRANTY	5 Years
COLOR QUALITY	3-Step MacAdam Ellipse	SHAPE	Round
CCT	27K, 30K, 35K, 40K, 50K	STYLE	Remodel Downlight

LED ROUND ARCHITECTURAL REMODEL DOWNLIGHT



Specification

SERIES: HHR4-LED
HHR6-LED
HHR8-LED

LUMEN PACKAGES: 900 LUMENS
1200 LUMENS
1500 LUMENS
2000 LUMENS
3000 LUMENS
4000 LUMENS
6000 LUMENS
8000 LUMENS

DRIVERS: DIM10 (0-10V 1% Dimming Standard)

VOLTAGE: 120
277

DISTRIBUTIONS: WD (70°-75°) - Wide Distribution
MD(55°-60°) - Medium Distribution
ND(35°-40°) - Narrow Distribution

CCT: 27K, 30K, 35K, 40K, 50K

EMERGENCY: EMG-LED

LISTING: c-UL-us - listed for Wet Location if used with HH8-8501 Trim.
c-UL-us - listed for feed Through Wiring. LM79 / LM80
U.S Patent No. - D685,118S

WARRANTY: 5 year limited warranty. As a system, we stand behind our entire products from housing to bar hangers.

Please visit spec sheet for more information at www.iuseelite.com

Controls provided by Elite Lighting



ZL00J-D0W

Sensor control module



ZL027-N0W

Power control module

Leviton Keypad



ZLDNK-1W



ZLDNK-2W



ZLDNK-4W



ZLDNK-8W

Intellect™ Keypad Room Controller

Leviton App

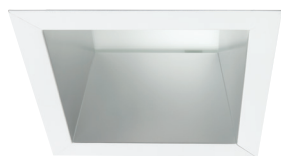


Neuron App

Square Trim Options

OPTIC	Wide, Medium, Narrow Distribution	SHAPE	Square
WARRANTY	5 Years Warranty	STYLE	Downlight, Wall Wash, Adjustable

SQUARE TRIM OPTIONS



6" - MOS-6614-CL

Reflector with Frosted Glass
Diffuse Lens



6" - MOS-6607-CL

Wall Wash Reflector with
Diffuse Lens



6" - MOS-6615-CL

Reflector with Tempered
Glass Lens



6" - MOS-6601-CL

Open Reflector



4" - LED-4607-CL

Wall Wash Reflector with
Diffuse Lens



4" - LED-4615-CL

Reflector with Tempered
Glass Lens



4" - LED-4614-CL

Reflector with Frosted Glass
Diffuse Lens

SQUARE TRIM-LESS OPTIONS



6" - EX-TL-6607-CL

Wall Wash Reflector with
Diffuse Lens



6" - EX-TL-6615-CL

Reflector with Tempered
Glass Lens



6" - EX-TL-6614-CL

Reflector with Frosted Glass
Diffuse Lens



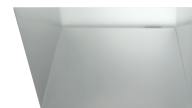
4" - HH4SQ-TL-4607-CL

Wall Wash Reflector with
Diffuse Lens



4" - HH4SQ-TL-4615-CL

Reflector with Tempered
Glass Lens



4" - HH4SQ-TL-4614-CL

Reflector with Frosted Glass
Diffuse Lens

Round Trim Options

OPTIC	Wide, Medium, Narrow Distribution	SHAPE	Round
WARRANTY	5 Years Warranty	STYLE	Downlight, Wall Wash, Adjustable

DESIGN OPTIONS



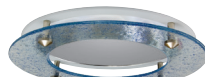
HH_- _501

Reflector with
Diffuse Lens



HH_- _509

Deco Glass Reflector
with Diffuse Lens



HH_- _521

Standard Ring Glass
Reflector with Diffuse Lens



HH_- _528(WH)

Reflector with Aluminum Disk &
Diffuse Lens-White

For 4", 5", 6", 8" & 10"
optics, replace " _ " in the
optics's part number with 4,
5, 6, 8 & 10.

Example: HH8-8501
for 8" optic.



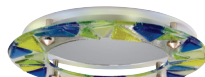
HH_- _507

Wall Wash Reflector
with Diffuse Lens



HH_- _510

Double Ring Glass
Reflector with Diffuse Lens



HH_- _523

Prismo Deco Ring Glass with
Diffuse Lens



HH_- _528(AL)

Reflector w/ Aluminum Disk &
Diffuse Lens Aluminum



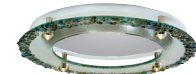
HH_- _577

Double Wall Wash
Reflector with Diffuse Lens



HH_- _511

Triple Ring Glass Reflector
with Diffuse Lens



HH_- _522

Euro Deco Ring Glass
with Diffuse Lens



HH_- _528(BZ)

Reflector with Aluminum
Disk & Diffuse Lens Bronze



HH_- _525

Central Etched Float Glass
with Diffuse Lens

COLOR OPTIONS REFLECTOR - RING FINISH



CL - WH

Specular clear Reflector/ Self
Flanged White Trim Ring



WT - WH

(Wheat Reflector/ Self
Flanged White Trim Ring)



W - WH

(White Reflector/ Self
Flanged White Trim Ring)



MB - WH

(Black Reflector/ Self
Flanged White Trim Ring)



CL - SCH

(Specular clear Reflector/ Self
Flanged White Trim Ring)



SHZ - WH

(Satin Haze Reflector/ Self
Flanged White Trim Ring)



SHZ - SHZ

(Satin Haze Refl./ Self
Flanged Satin Haze Trim Ring)

COLOR OPTIONS - TRIM-LESS



CL

Specular clear Reflector



SHZ

Satin Haze Reflector

1 ELITE Cylinder Series + Leviton Wireless Control



ZL00J-D0W
Sensor control module



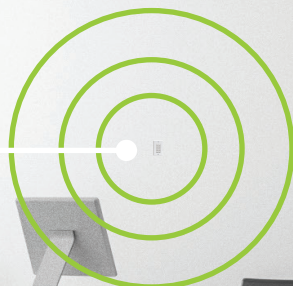
SCH6-LED-PM
Cylinder



ZL027-N0W
Power control module



ZLDNK-8W
Intellect™ Keypad Room
Controller



LED Architectural Cylinder + Control



LUMEN OUTPUT	Up to 4000 Lumens	OPTIC	Wide, Medium and Narrow Distribution
CRI	85+, 90+, 98+	WARRANTY	5 Years
COLOR QUALITY	3-Step MacAdam Ellipse	APERTURE	6" and 8"
CCT	27K, 30K, 35K, 40K, 50K	STYLE	Downlight, Down/up

6" 6" LED ARCHITECTURAL CYLINDERS



SCH6-LED-PM
Ceiling Mount



SCH6-LED-SM
Ceiling Mount (aircraft)



SCH6-LED-CM
Surface Ceiling Mount



SCH6-LED-WM
Wall Mount

8" 8" LED ARCHITECTURAL CYLINDERS



SCH8-LED-PM
Ceiling Mount



SCH8-LED-SM
Ceiling Mount (aircraft)



SCH8-LED-CM
Surface Ceiling Mount



SCH8-LED-WM
Wall Mount

Specification

SERIES: SCH6-LED-PM, SCH6-LED-SM, SCH6-LED-CM, SCH6-LED-WM
SCH8-LED-PM, SCH8-LED-SM, SCH8-LED-CM, SCH8-LED-WM

LUMEN PACKAGES: 900 LUMENS
1200 LUMENS
1500 LUMENS
2000 LUMENS
3000 LUMENS
4000 LUMENS

DRIVERS: DIM10 (0-10V 1% Dimming Standard)

VOLTAGE: 120
277

DISTRIBUTIONS: WD (70°-75°) - Wide Distribution
MD(55°-60°) - Medium Distribution
ND(35°-40°) - Narrow Distribution

CCT: 27K, 30K, 35K, 40K, 50K

EMERGENCY: EMG-LED

LISTING: c-UL-us - listed for feed Through Wiring.
LM79 / LM80

WARRANTY: 5 year limited warranty. As a system, we stand behind our entire products from housing to bar hangers.

Please visit spec sheet for more information at www.iuseelite.com

Controls provided by Elite Lighting



ZL00J-D0W

Sensor control module



ZL027-N0W

Power control module

Leviton Keypad



ZLDNK-1W



ZLDNK-2W



ZLDNK-4W



ZLDNK-8W

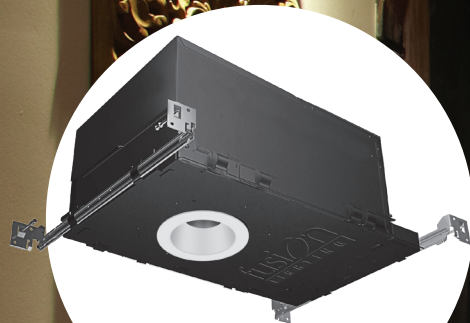
Intellect™ Keypad Room Controller

Leviton App



Neuron App

1 ELITE Small Aperture Series + Leviton Wireless Control



ER3-LED
LED Small Aperture



ZL027-N0W
Power control module



ZL00J-D0W
Sensor control module



ZLDNK-8W
Intellect™ Keypad Room
Controller

Small Aperture Specification Downlighting + Control



LUMEN OUTPUT	Up to 2000 Lumens	OPTIC	Wide, Medium and Narrow Distribution
CRI	90+	WARRANTY	5 Years
COLOR QUALITY	2-Step MacAdam Ellipse	TRIM OPTIONS	3" & 4" Square and Round
CCT	27K, 30K, 35K, 40K, 50K	STYLE	Downlight, Wall wash, Adjustable

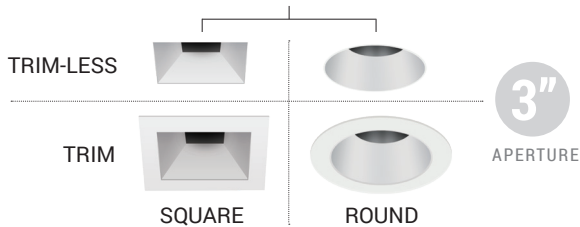
LED ADJUSTABLE

ER3-LED/ ER3-LED-IC

LED ROUND & SQUARE SMALL APERTURE ADJUSTABLE ARCHITECTURAL DOWNLIGHT



ONE DOWNLIGHT WITH MULTIPLE TRIM OPTIONS



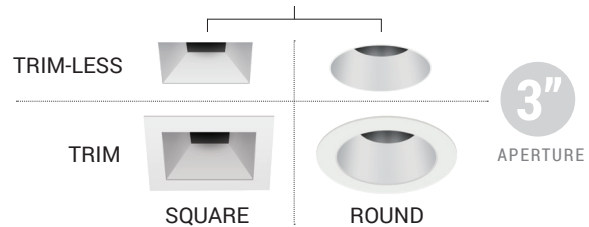
LED SHALLOW

ER3-S-LED

LED ROUND & SQUARE SMALL APERTURE SHALLOW ARCHITECTURAL DOWNLIGHT

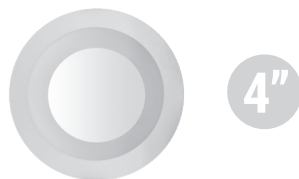


ONE DOWNLIGHT WITH MULTIPLE TRIM OPTIONS



SR4-LED

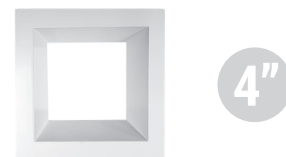
LED ROUND SMALL APERTURE SHALLOW ARCHITECTURAL DOWNLIGHT



ROUND

SS4-LED

LED SQUARE SMALL APERTURE SHALLOW ARCHITECTURAL DOWNLIGHT










SQUARE

**Ceiling access to fixtures required*

Specification

SERIES:	ER3-LED, ER3-LED-IC ER3-SHAL-LED SR4-LED SS4-LED
LUMEN PACKAGES:	700 LUMENS 900 LUMENS 1000 LUMENS 1200 LUMENS 1500 LUMENS 2000 LUMENS
DRIVERS:	DIM10 (0-10V 1% Dimming Standard)
VOLTAGE:	120 277
DISTRIBUTIONS:	ND-10 (10°) - Narrow Distribution ND-18 (18°) - Narrow Distribution MD-25 (25°) - Medium Distribution MD-35 (35°) - Medium Distribution WD-50 (50°) - Wide Distribution
CCT:	27K, 30K, 35K, 40K, 50K
EMERGENCY:	EMG-LED Typical lumen output of the fixture is up to 1000L in emergency mode. Contact the factory for details.
OPTIONS:	Blank-Standard bar hangers (included) BP31 - 27" C-channel bar hangers. RIF - RIF filter.
LISTING:	c-UL-us listed for damp location. c-UL-us listed for feed Through Wiring. c-UL-us listed for direct contact with insulation.
WARRANTY:	Fusion ER Recessed luminaries are covered by Fusion's 5 year limited warranty. As a system, we stand behind our entire products from housing to bar hangers.

Please visit spec sheet for more information at www.iuseelite.com

Controls provided by Elite Lighting		Leviton Keypad				Leviton App
						
ZL00J-D0W Sensor control module	ZL027-N0W Power control module	ZLDNK-1W	ZLDNK-2W	ZLDNK-4W	ZLDNK-8W	Neuron App
Intellect™ Keypad Room Controller						

① ELITE Combo Light Series + Leviton Wireless Control



FC2-LED
Combo Lighting



ZL027-N0W
Power control module



ZLDNK-8W
Intellect™ Keypad Room
Controller



ZL00J-D0W
Sensor control module

Combo Lighting + Control



LUMEN OUTPUT	Up to 2000 Lumens/per head	OPTIC	Wide, Medium and Narrow Distribution
CRI	90+	WARRANTY	5 Years
COLOR QUALITY	2-Step MacAdam Ellipse	FINISH	White or Black Trim
CCT	27K, 30K, 40K	STYLE	Adjustable

LED COMBO LIGHTING



FC1-LED
One Head Combo Light



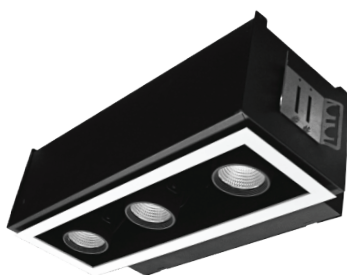
FCL-LED
L Shape Head Combo Light



FCX-LED
Square Head Combo Light



FC2-LED
Two Head Combo Light



FC3-LED
Three Shape Head Combo Light










FC4-LED
Four Head Combo Light

Specification

SERIES:	FC1-LED FC2-LED FC3-LED FC4-LED FCL-LED FCX-LED
LUMEN PACKAGES:	1000 LUMENS 1500 LUMENS 2000 LUMENS
DRIVERS:	DIM10 (0-10V 1% Dimming Standard)
VOLTAGE:	120 277
DISTRIBUTIONS:	NS (10°-12°) FL (20°-30°) WFL (30°-40°) VWFL (50°-60°)
CCT:	27K, 30K, 40K
EMERGENCY:	EMG-LED Typical lumen output of the fixture is up to 1000L in emergency mode. Contact the factory for details.
OPTIONS:	Flanged or trim-less
WARRANTY:	All Fusion Combo Lights are design using a proprietary cooled Advanced Thermodynamic Design. Heat management systems are engineered for extremely long life and service periods. Fusion FC multi-lamp luminaries are covered by Fusion's one year limited warranty. As a system, we stand behind our entire products from housing to bar hangers.

Please visit spec sheet for more information at www.iuseelite.com

Controls provided by Elite Lighting		Leviton Keypad				Leviton App
						
ZL00J-D0W Sensor control module	ZL027-N0W Power control module	ZLDNK-1W	ZLDNK-2W	ZLDNK-4W	ZLDNK-8W	Neuron App
Intellect™ Keypad Room Controller						

① ELITE Linear Slot Series + Leviton Wireless Control





ZL00J-D0W
Sensor control module



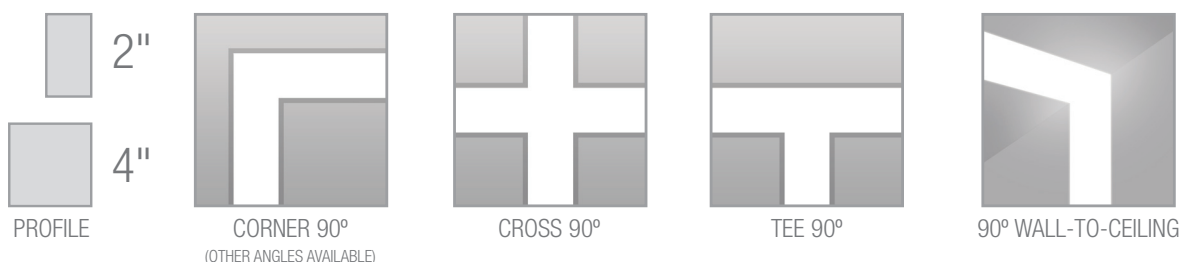
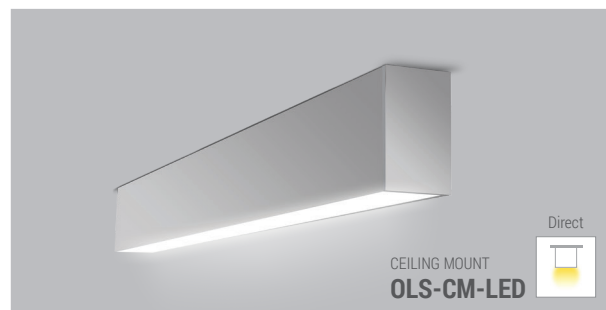
ZL027-N0W
Power control module





LED Architectural Slot + Control



LUMEN OUTPUT	1000 Lumens/ foot	DIFFUSER	Smooth white frosted acrylic lens
CRI	85+	WARRANTY	5 Years
COLOR QUALITY	3-Step MacAdam Ellipse	SIZE	2" and 4" profile
CCT	27K, 30K, 35K, 40K, 50K	LENGTH	2', 4' and 8'



Specification

SERIES:	WIDTH	LENGTH			DESCRIPTION
		2 feet	4 feet	8 feet	
2 inches		2-OLS-DI-LED-2	4-OLS-DI-LED-2	8-OLS-DI-LED-2	(DI) Direct/ Indirect
		2-OLS-D-LED-2	4-OLS-D-LED-2	8-OLS-D-LED-2	(D) Direct
		2-OLS-R-LED-2	4-OLS-R-LED-2	8-OLS-R-LED-2	(R) Recessed
		2-OLS-CM-LED-2	4-OLS-CM-LED-2	8-OLS-CM-LED-2	(CM) Ceiling Mount
		2-OLS-WD-LED-2	4-OLS-WD-LED-2	8-OLS-WD-LED-2	(WD) Wall Mount Direct
		2-OLS-WDI-LED-2	4-OLS-WDI-LED-2	8-OLS-WDI-LED-2	(WDI) Wall Mount Direct/Indirect
		2-OLS-R-LED-WW-2	4-OLS-R-LED-WW-2	8-OLS-R-LED-WW-2	(R)(WW) Recessed/Wall Wash
4 inches		2-OLS-DI-LED-4	4-OLS-DI-LED-4	8-OLS-DI-LED-4	(DI) Direct/ Indirect
		2-OLS-D-LED-4	4-OLS-D-LED-4	8-OLS-D-LED-4	(D) Direct
		2-OLS-R-LED-4	4-OLS-R-LED-4	8-OLS-R-LED-4	(R) Recessed
		2-OLS-CM-LED-4	4-OLS-CM-LED-4	8-OLS-CM-LED-4	(CM) Ceiling Mount
		2-OLS-WD-LED-4	4-OLS-WD-LED-4	8-OLS-WD-LED-4	(WD) Wall Mount Direct
		2-OLS-WDI-LED-4	4-OLS-WDI-LED-4	8-OLS-WDI-LED-4	(WDI) Wall Mount Direct/Indirect
		2-OLS-R-LED-WW-4	4-OLS-R-LED-WW-4	8-OLS-R-LED-WW-4	(R)(WW) Recessed/Wall Wash

LUMEN PACKAGES: 500 LUMENS
750 LUMENS
1000 LUMENS

DRIVERS: DIM10 (0-10V 1% Dimming Standard)

WIDTH: 2 & 4 Inches

LENGTH: 2, 4 & 8 Feet








VOLTAGE: MVOLT

CCT: 27K, 30K, 35K, 40K, 50K

EMERGENCY: 0-EMG-LED
10W emergency power lasts for 90 minutes. Max. mounting height is 15-1/2'

WARRANTY: 5 year limited warranty. As a system, we stand behind our entire products from housing to bar hangers.

Please visit spec sheet for more information at www.iuseelite.com

Controls provided by Elite Lighting		Leviton Keypad				Leviton App
						
ZL00J-D0W Sensor control module	ZL027-N0W Power control module	ZLDNK-1W	ZLDNK-2W	ZLDNK-4W	ZLDNK-8W	Neuron App
		Intellect™ Keypad Room Controller				

1 ELITE Suspended Linear Series + Leviton Wireless Control



ZL00J-D0W
Sensor control module



ASI5-LED
Suspended Linear



ZL027-N0W
Power control module

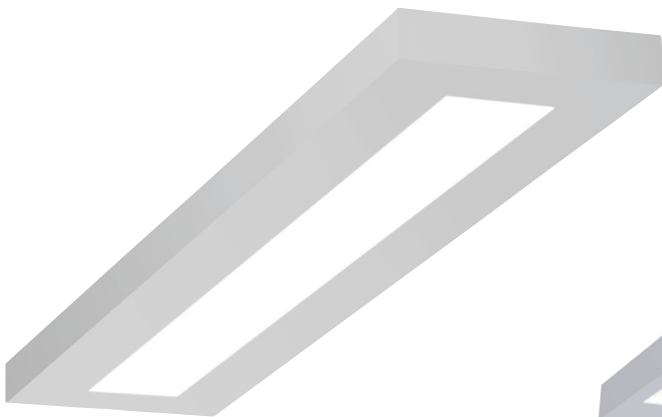


ZLDNK-8W
Intellect™ Keypad Room
Controller

LED Suspended Linear + Control

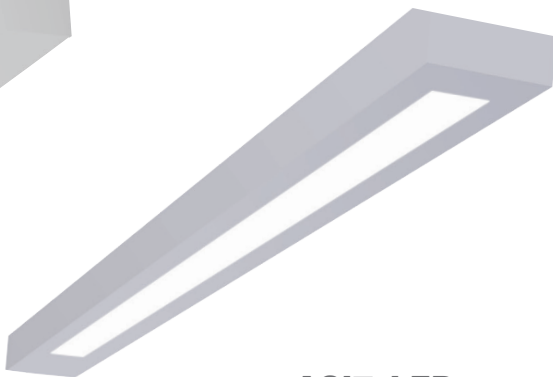


LUMEN OUTPUT	Up to 8000 Lumens	STYLE	Downlight or Up/Down
CRI	85+	WARRANTY	5 Years
COLOR QUALITY	3-Step MacAdam Ellipse	VOLTAGE	MVOLT
CCT	27K, 30K, 35K, 40K, 50K	LENGTH	4' and 8'



ASI5-LED

Architectural LED Suspended Linear
Direct/Indirect System



ASI7-LED

Architectural Suspended Linear LED
Direct System



ASI6-LED

Architectural LED Suspended Linear
Direct/Indirect Frosted Lens System










OB1DI-LED

Architectural LED Suspended Mount
Linear Direct/Indirect System

Specification

SERIES:	4-ASI5-LED, 8-ASI5-LED 4-ASI7-LED, 8-ASI7-LED 4-OB1DI-LED, 8-OB1DI-LED
LUMEN PACKAGES:	4000 LUMENS 8000 LUMENS
DRIVERS:	DIM10 (0-10V 1% Dimming Standard)
LENGTH:	4 & 8 Feet
VOLTAGE:	MVOLT
CCT:	27K, 30K, 35K, 40K, 50K
EMERGENCY:	0-EMG-LED Must be ordered with CRMPF or SUM option only
WARRANTY:	5 year limited warranty. As a system, we stand behind our entire products from housing to bar hangers.
Please visit spec sheet for more information at www.iuseelite.com	

Controls provided by Elite Lighting		Leviton Keypad		Leviton App
				
ZL00J-D0W Sensor control module	ZL027-N0W Power control module	ZLDNK-1W	ZLDNK-2W	ZLDNK-4W
		ZLDNK-8W		
		Intellect™ Keypad Room Controller		
				Neuron App

1 ELITE Recessed Linear Series + Leviton Wireless Control





ZL00J-D0W
Sensor control module



ZL027-N0W
Power control module

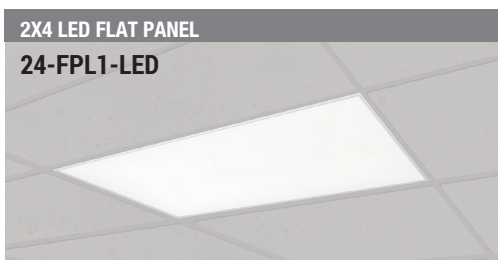


ZLDNK-8W
Intellect™ Keypad Room
Controller

LED Recessed Linear + Control



LUMEN OUTPUT	UP to 8000 Lumens	DIFFUSER	Acrylic Lens
CRI	85+	WARRANTY	5 Years
COLOR QUALITY	3-Step MacAdam Ellipse	SIZE	1'x 4', 2'x 2' and 2'x4'
CCT	30K, 35K, 40K and 50K	DIMMING	1% standard Dimming



LUMEN PACKAGE **3000 | 4000 | 5000 | 6000**



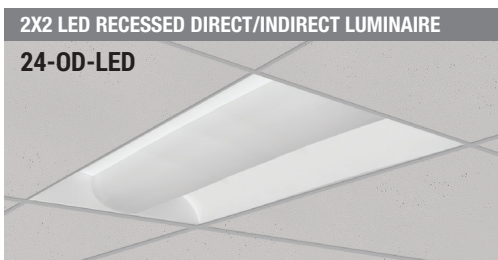
LUMEN PACKAGE **2000 | 3000 | 4000 | 5000**



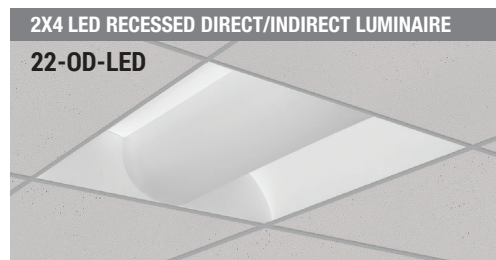
LUMEN PACKAGE **4000 | 5000 | 6000 | 8000**



LUMEN PACKAGE **2400 | 3400 | 4000 | 5000**



LUMEN PACKAGE **3000 | 4000 | 5000 | 6000**



LUMEN PACKAGE **2000 | 3000 | 4000**



LUMEN PACKAGE **4000 | 5000 | 6000 | 8000**



LUMEN PACKAGE **3000**

Specification

SERIES: 24-FPL1-LED, 22-FPL1-LED, 24-OT-LED, 22-OT-LED
24-OD-LED, 22-OD-LED, 24-OVHP-LED-RTK, 22-OVHP-LED-RTK

LUMEN PACKAGES: 2000 LUMENS
2400 LUMENS
3000 LUMENS
3400 LUMENS
4000 LUMENS
6000 LUMENS
8000 LUMENS

DRIVERS: DIM10 (0-10V 1% Dimming Standard)

VOLTAGE: MVOLT

CCT: 30K, 35K, 40K, 50K

EMERGENCY: O-EMG-LED
10W emergency power lasts for 90 minutes. Max. mounting height is 15-1/2'

WARRANTY: 5 year limited warranty. As a system, we stand behind our entire products from housing to bar hangers.

Please visit spec sheet for more information at www.iuseelite.com

Controls provided by Elite Lighting



ZL00J-D0W

Sensor control module



ZL027-N0W

Power control module

Leviton Keypad



ZLDNK-1W



ZLDNK-2W



ZLDNK-4W



ZLDNK-8W

Intellect™ Keypad Room Controller

Leviton App

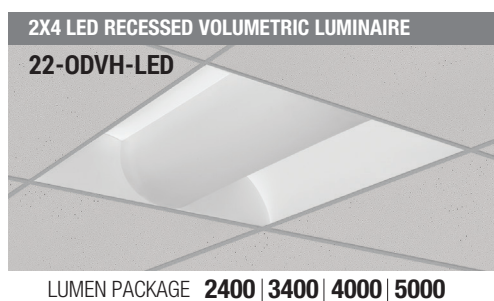
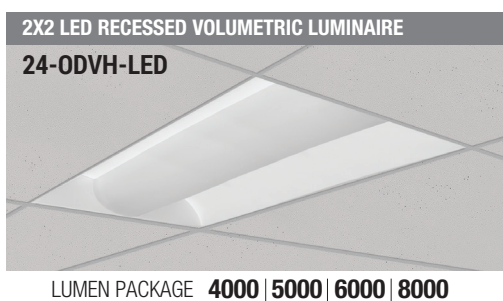
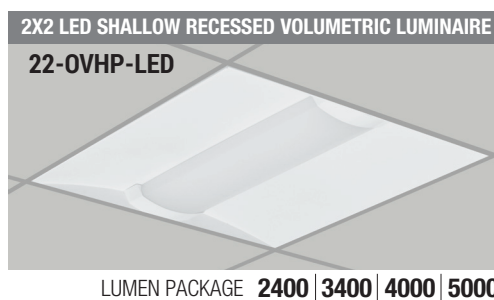
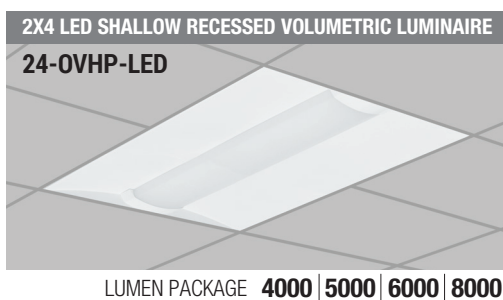


Neuron App

LED Recessed Linear + Control



LUMEN OUTPUT	UP to 8000 Lumens	DIFFUSER	Acrylic Lens
CRI	85+	WARRANTY	5 Years
COLOR QUALITY	3-Step MacAdam Ellipse	SIZE	1'x 4', 2'x 2' and 2'x4'
CCT	30K, 35K, 40K and 50K	DIMMING	1% standard Dimming



Specification

SERIES: 24-NV-LED, 22-NV-LED
24-OVHP-LED, 22-OVHP-LED
24-OD1V-LED, 22-OD1V-LED
24-ODVH-LED, 22-ODVH-LED

LUMEN PACKAGES: 2000 LUMENS
2400 LUMENS
3000 LUMENS
3400 LUMENS
4000 LUMENS
6000 LUMENS
8000 LUMENS

DRIVERS: DIM10 (0-10V 1% Dimming Standard)

VOLTAGE: MVOLT

CCT: 30K, 35K, 40K, 50K

EMERGENCY: O-EMG-LED
10W emergency power lasts for 90 minutes. Max. mounting height is 15-1/2'

WARRANTY: 5 year limited warranty. As a system, we stand behind our entire products from housing to bar hangers.

Please visit spec sheet for more information at www.iuseelite.com

Controls provided by Elite Lighting



ZL00J-D0W

Sensor control module



ZL027-N0W

Power control module

Leviton Keypad



ZLDNK-1W



ZLDNK-2W



ZLDNK-4W



ZLDNK-8W

Intellect™ Keypad Room Controller

Leviton App



Neuron App

1 ELITE Suspended Linear Series + Leviton Wireless Control



OC1-LED
Surface Mount Linear

ZLDNK-8W
Intellect™ Keypad Room
Controller



ZL00J-D0W
Sensor control module



ZL027-N0W
Power control module

LED Surface Mount Linear + Control



LUMEN OUTPUT	Up to 16000 Lumens	DIFFUSER	Acrylic lens
CRI	85+	WARRANTY	5 Years
COLOR QUALITY	3-Step MacAdam Ellipse	VOLTAGE	MVOLT
CCT	27K, 30K, 35K, 40K, 50K	LENGTH	2", 4' and 8'



OC1-LED
UP TO 16000L
LED General Lighting
Linear Curve Luminaire



OIW-LED
UP TO 7000L
LED Wrap Around



OSMT-LED
UP TO 8000L
LED Surface Mount Specification
Grade Troffer



OV2R-LED
UP TO 8000L
LED Vandal Resistant Linear

Specification

SERIES: 2-OC1-LED, 4-OC1-LED, 8-OC1-LED
2-OIW-LED, 4-OIW-LED, 8-OIW-LED
14-OSMT-LED, 22-OSMT-LED, 24-OSMT-LED
4-OV2R-LED

LUMEN PACKAGES: 2000 LUMENS
4000 LUMENS
6000 LUMENS
8000 LUMENS
10000 LUMENS
12000 LUMENS
16000 LUMENS

DRIVERS: DIM10 (0-10V 1% Dimming Standard)

LENGTH: 2, 4 & 8 Feet

VOLTAGE: MVOLT

CCT: 27K, 30K, 35K, 40K, 50K

EMERGENCY: 0-EMG-LED
Must be ordered with CRMPF or SUM option only

WARRANTY: 5 year limited warranty. As a system, we stand behind our entire products from housing to bar hangers.

Please visit spec sheet for more information at www.iuseelite.com

Controls provided by Elite Lighting



ZL00J-D0W

Sensor control module



ZL027-N0W

Power control module

Leviton Keypad



ZLDNK-1W



ZLDNK-2W



ZLDNK-4W



ZLDNK-8W

Intellect™ Keypad Room Controller

Leviton App



Neuron App



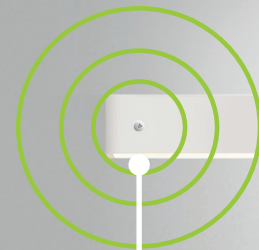
ELITE Wall Mount Linear Series + Leviton Wireless Control



ZL027-N0W
Power control module



ZL00J-D0W
Sensor control module





ZLDNK-8W
Intellect™ Keypad Room
Controller



OW2B-LED
LED Wall/Ceiling
Up and Down Downlight

LED Wall Mount Linear + Control



LUMEN OUTPUT	Up to 8000 Lumens	DIFFUSER	Acrylic Lens
CRI	85+	WARRANTY	5 Years
COLOR QUALITY	3-Step MacAdam Ellipse	VOLTAGE	MVOLT
CCT	27K, 30K, 35K, 40K, 50K	LENGTH	2', 4' and 8'



ASW1-LED

UP TO 8000L

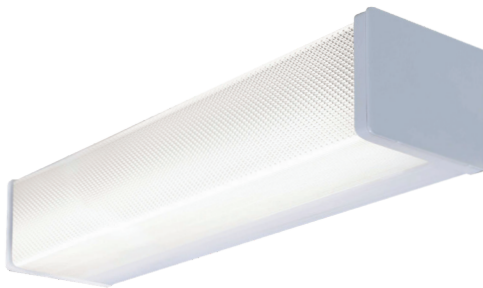
Architectural LED Linear
Direct/Indirect (Wall Mount)



ASW2-LED

UP TO 8000L

Architectural LED Linear
Direct/Indirect (Wall Mount)



OW1B-LED

UP TO 4000L

LED Wall/Ceiling Bracket



OW2B-LED

UP TO 2000L

LED Wall/Ceiling
Up and Down Downlight

Specification

SERIES: 4-ASW1-LED, 8-ASW1-LED, 4-ASW2-LED, 8-ASW2-LED
2-OW1B-LED, 4-OW1B-LED, 2-OW2B-LED, 4-OW2B-LED

LUMEN PACKAGES: 2000 LUMENS
4000 LUMENS
6000 LUMENS
8000 LUMENS

DRIVERS: DIM10 (0-10V 1% Dimming Standard)

VOLTAGE: MVOLT

CCT: 27K, 30K, 35K, 40K, 50K

EMERGENCY: O-EMG-LED
Must be ordered with CRMPF or SUM option only

WARRANTY: 5 year limited warranty. As a system, we stand behind our entire products from housing to bar hangers.

Please visit spec sheet for more information at www.iuseelite.com

Controls provided by Elite Lighting



ZL00J-D0W

Sensor control module



ZL027-N0W

Power control module

Leviton Keypad



ZLDNK-1W



ZLDNK-2W



ZLDNK-4W



ZLDNK-8W

Intellect™ Keypad Room Controller

Leviton App



Neuron App

NOTES





elite
LED LIGHTING

+

LEVITON®



The products shown in this catalog are covered by USA and international patents. Specifications are subject to change without prior notice.

Elite Lighting reserves the right to make any changes in the design, construction and listing approval of the products listed in this catalog which may be required by law or by the rules of any regulatory body or at its discretion.

Dimensions and specifications are subject to change without prior notice.

Not responsible for any typographical errors.

Wattage and specifications may be different for products supplied in CANADA.

Main Office: Los Angeles, CA

• **WWW.IUSEELITE.COM**

• Tel: **1-323-888-1973 / 1-877-375-5555**

• Fax: **1-323-888-1977 / 1-877-375-3333**

© Copyright 2018. Elite Lighting. All Rights Reserved / Rev1.0-2018