



Illuminating Your Imagination

Installation Guide

Please note that, in most cases, the SOUL luminaire is custom-designed and its configuration varies according to the specific needs of the space. This is a general installation guide for suspension, wall, ceiling, and recessed trimless mounts.

The images and examples in this guide feature linear components. For curved components, the installation of the driver within the profile may vary and can be more challenging, requiring the driver to be installed remotely in some cases.

For Static White technology, the driver is typically installed within the luminaire due to its size; however, in certain instances, it may also be installed remotely depending on the luminaire design. In the case of RGBW and Tunable White systems, the driver is almost always installed remotely due to its size, as it may not fit within the luminaire.

For any additional information or assistance, please contact our customer service team.

Page 3	Linear splicing strip
Page 4	Curved splicing strip
Page 5	PC cover installation
Page 6	Profile components
Page 7	Surface mount / LED board removal instructions
Page 9	Surface mount installation
Page 11	Recessed mount installation
Page 13	Suspended mount installation



**FLICKER
FREE**

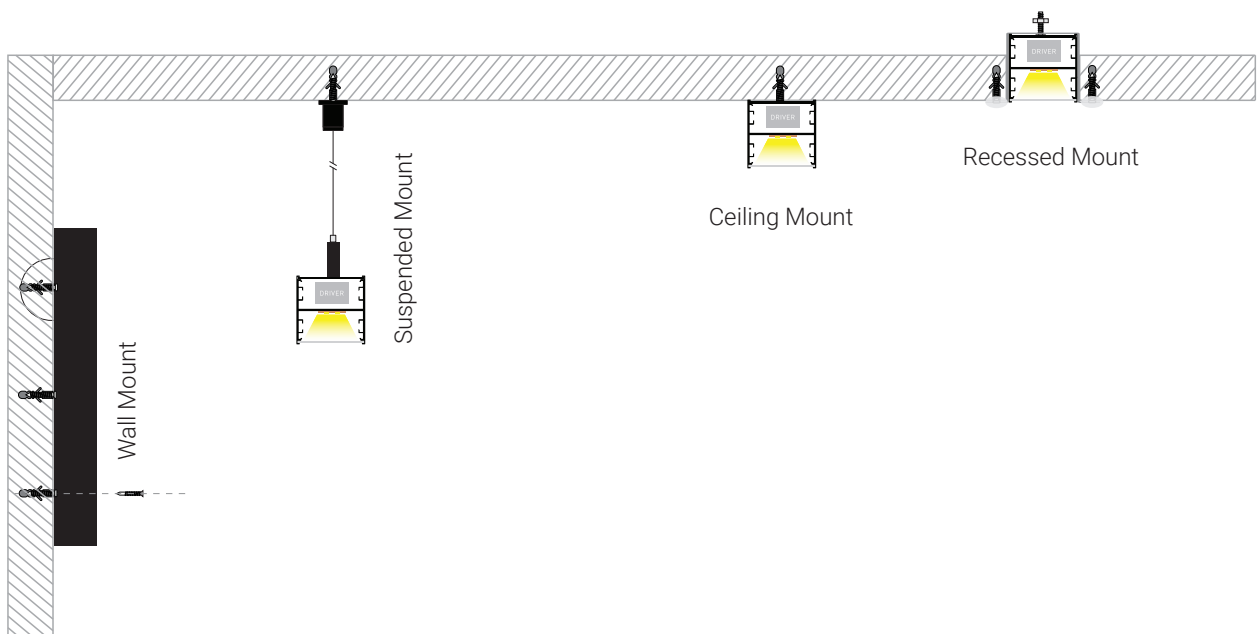
RoHS



WARNING: Please review all instructions before beginning installation.

- Professional installation by a licensed electrician is required.
- Always disconnect the power supply from the electrical circuit before commencing any work.
- Input Voltage: 120-277V

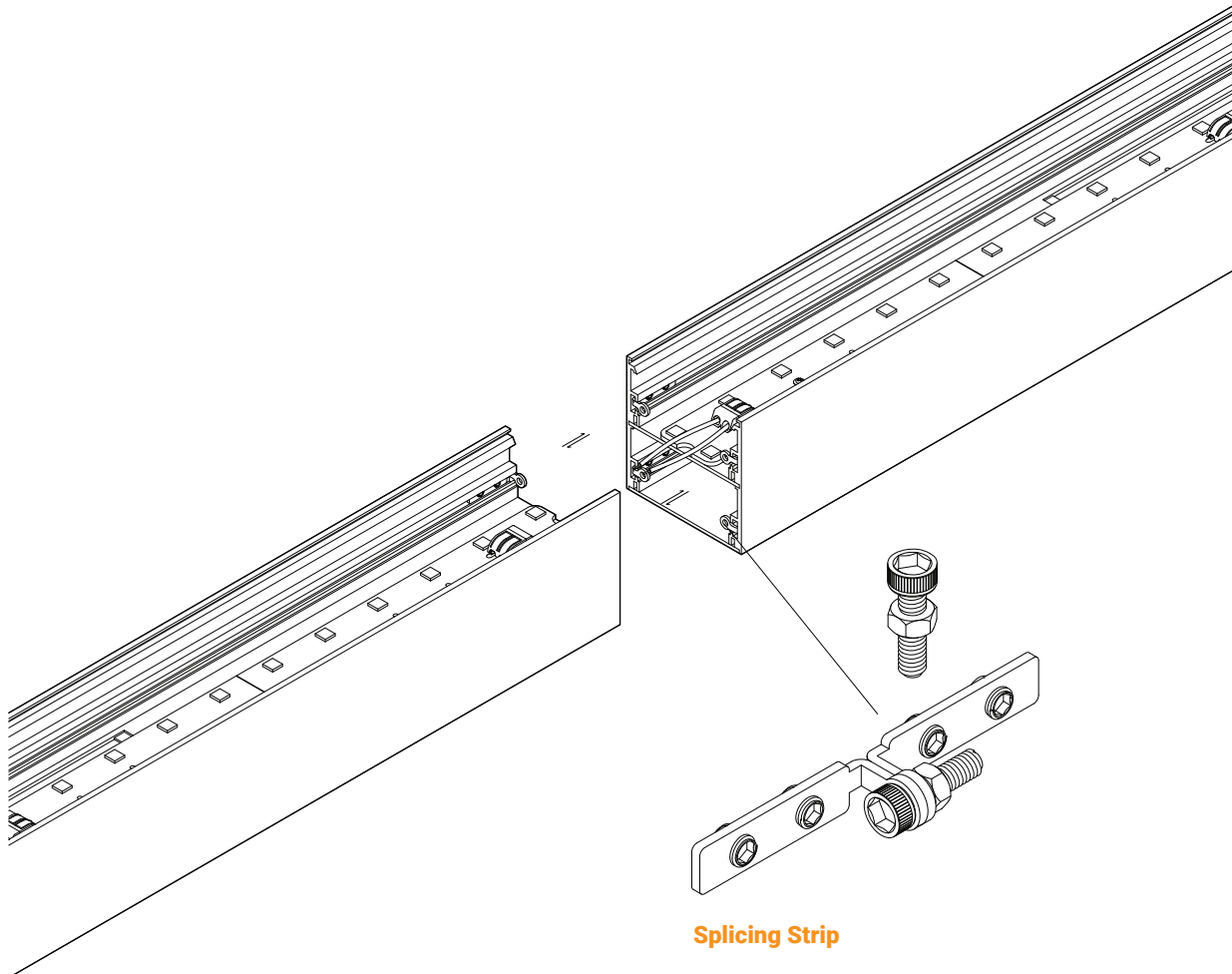
Mounting Options



Linear

Two or more linear pieces are connected using a splicing strip

- Begin by positioning the strip along the edge where the linear pieces will connect; keep straight and level.
- Align the linear pieces along the strip for a clean, tight fit, and fasten in place with the provided screws.
- Finally, check the alignment and stability.

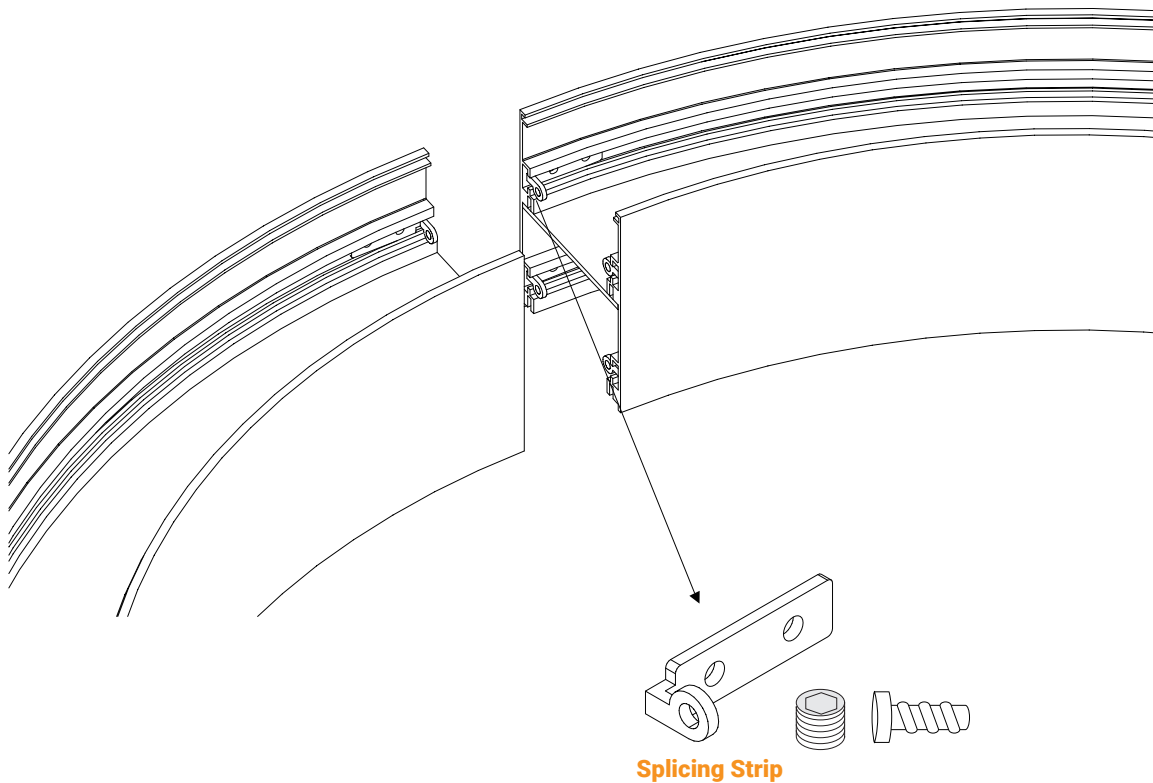


Splicing Strip

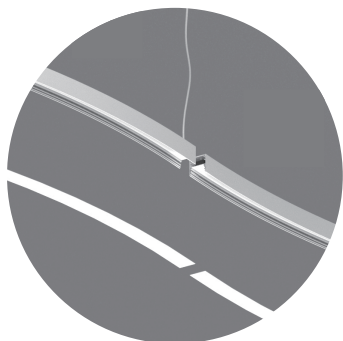
Curved

Two or more curved pieces are connected using a splicing strip

- Start by positioning the strip along the curved edge where the pieces connect, following along the curve.
- Secure the strip with the provided screws, making sure it stays level and consistent along the curve.
- Align the curved pieces with the strip for a tight, seamless fit. Fasten the pieces in place with the provided screws, following the curve as necessary.
- Check the alignment and stability of the installation. Adjust as needed.



PC Cover



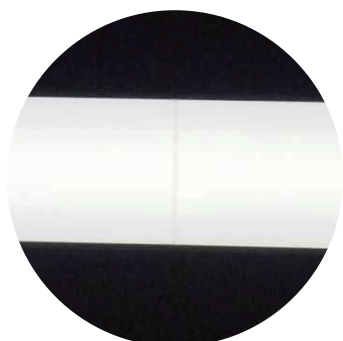
Gently slide the lens through the opening of the fixture.



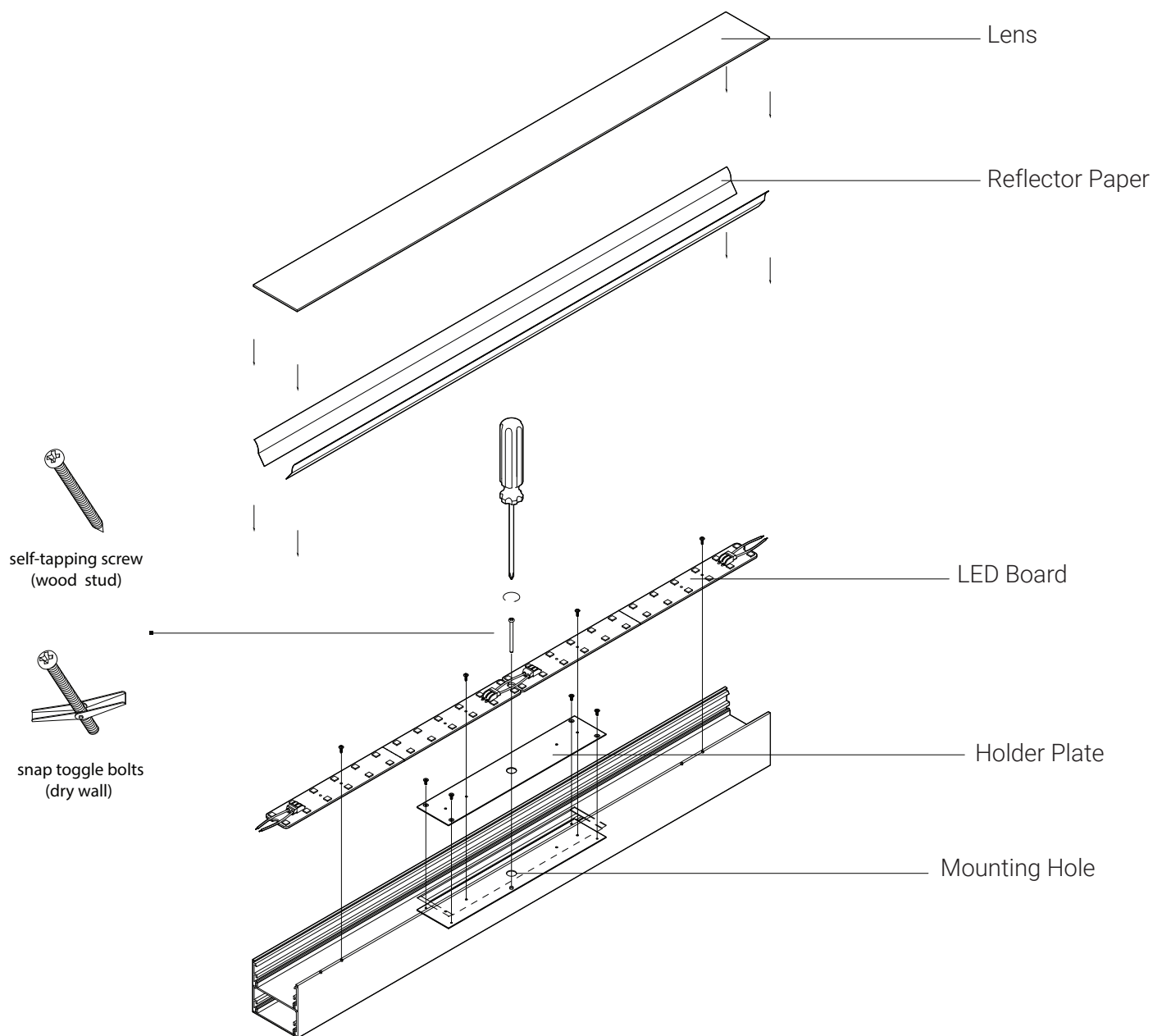
Use the provided glue to fill any gaps that remain between the lenses.



Spread the glue if necessary to ensure a smooth finish.



Allow the lens to dry, and the installation will be complete.



Lens: Designed to provide optimal light distribution.

Reflector Paper: Directs and amplifies light for focused or even distribution.

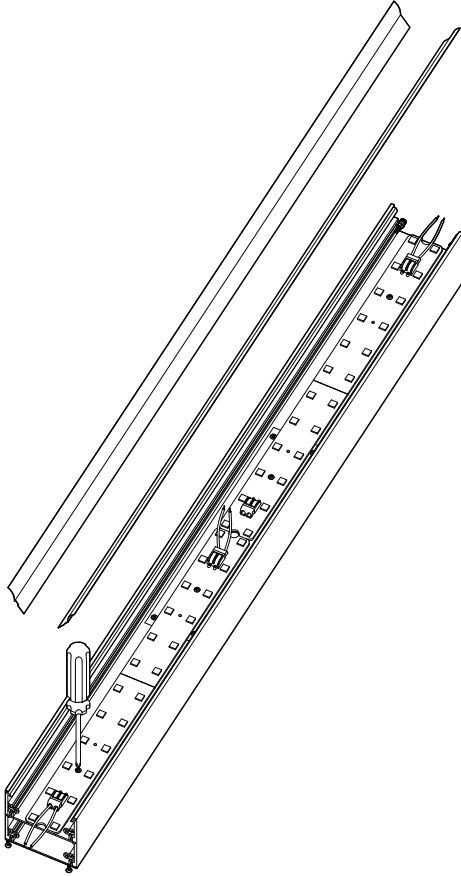
LED Board: Engineered for maximum efficiency and longevity

Holder Plate: Holds the LED board, allowing easy removal for mounting the profile to the wall or ceiling.

Mounting Hole: Hole for securing the profile to the wall or ceiling with screws.

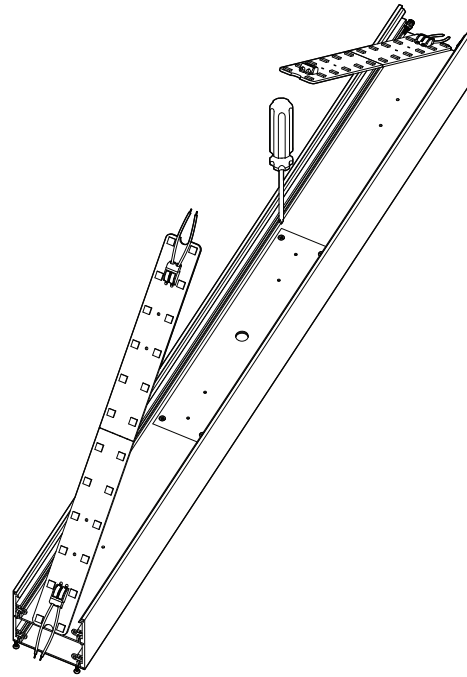
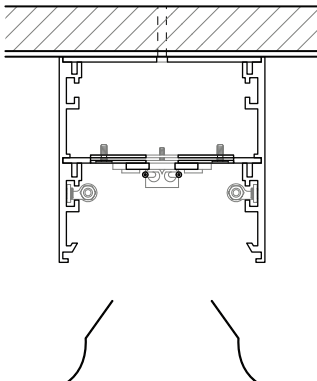
LED Board Removal Instructions

The LED board can be removed by following the steps outlined below, in case it's preferred to install the profile without the LED board to avoid any potential damage.



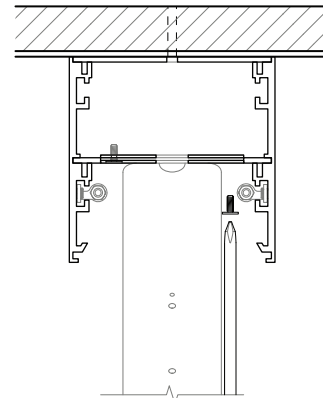
1

Remove the lens and reflector paper, then disconnect the cables between the circuits.

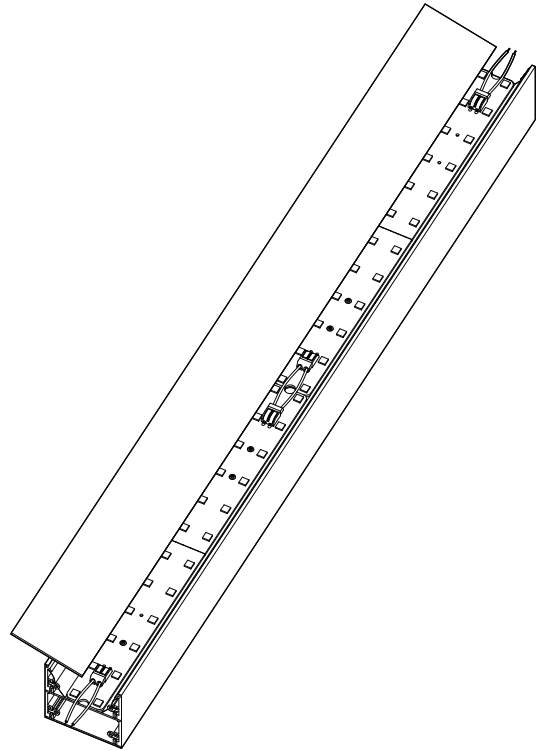
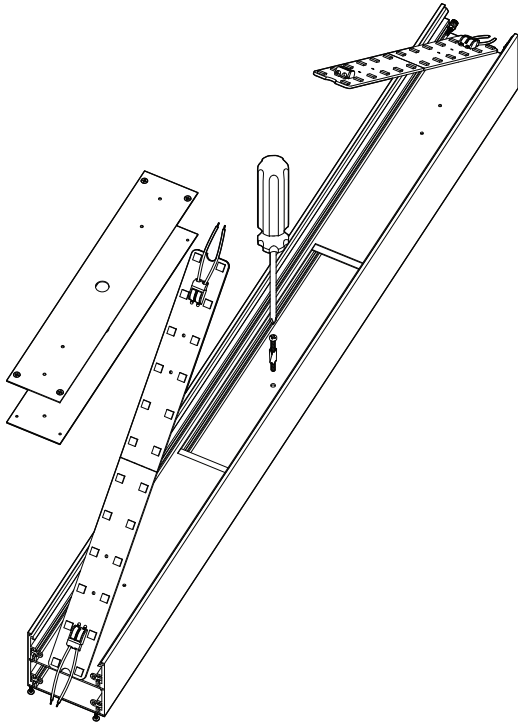


2

Remove the screws that hold the LED board in place.

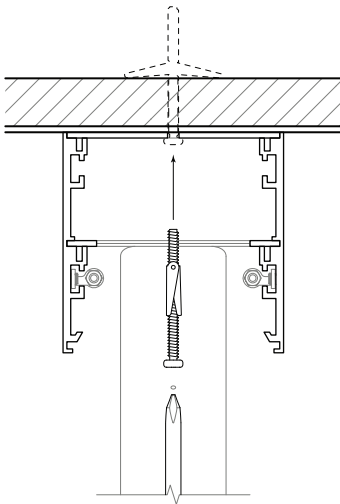


LED Board Removal Instructions



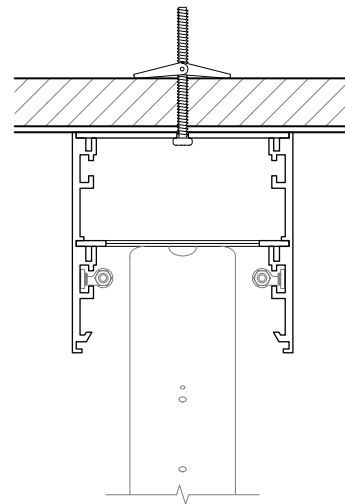
3

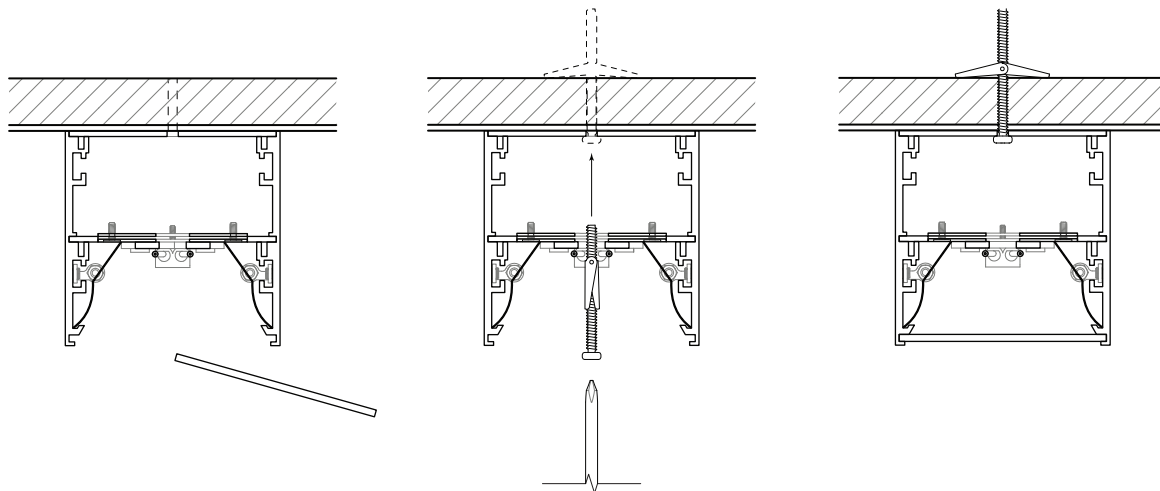
Remove the holder plate and proceed to secure the profile to the surface.



4

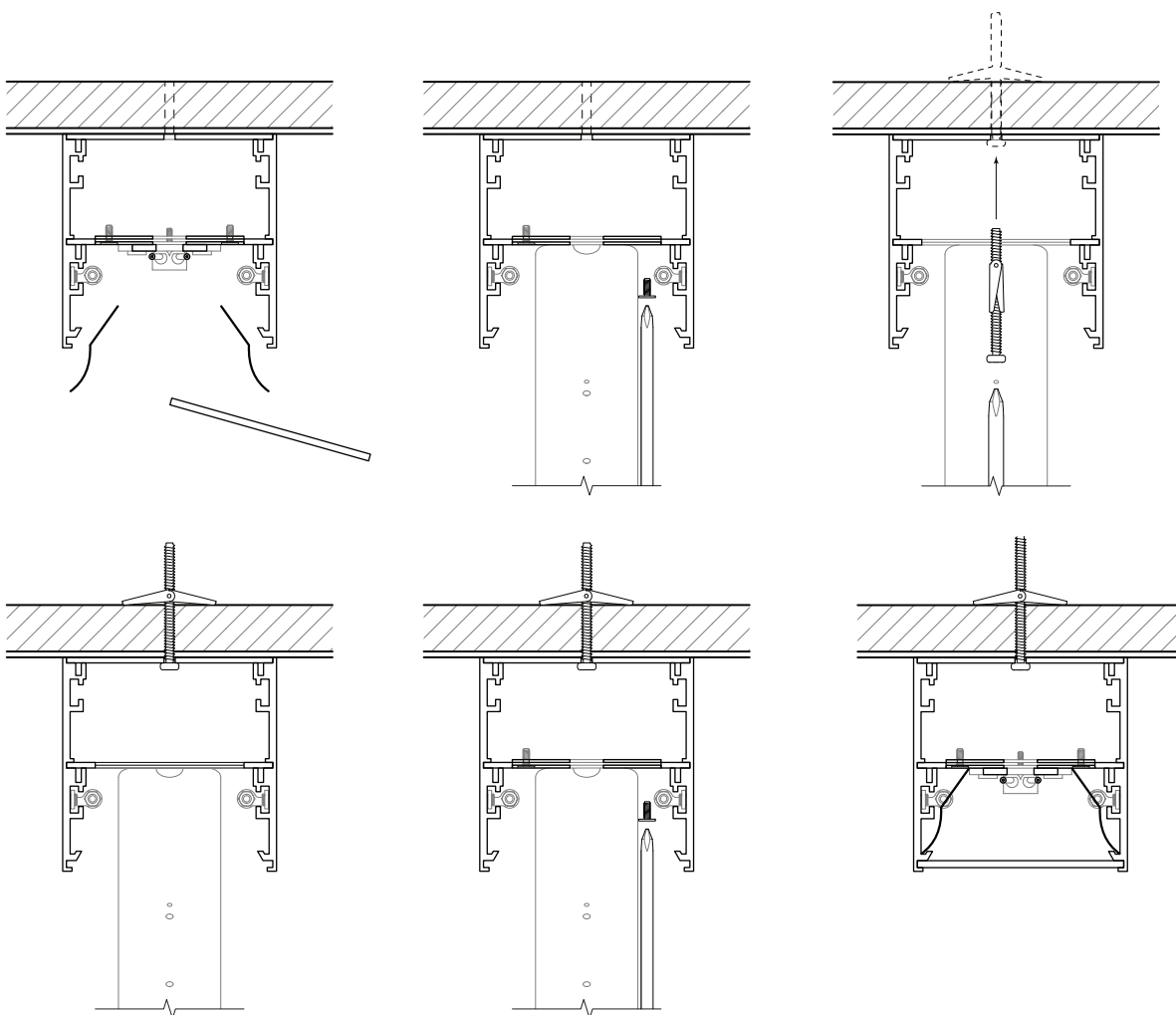
After installing the profile on the surface, reassemble all the removed parts.





Option A: Direct Mounting

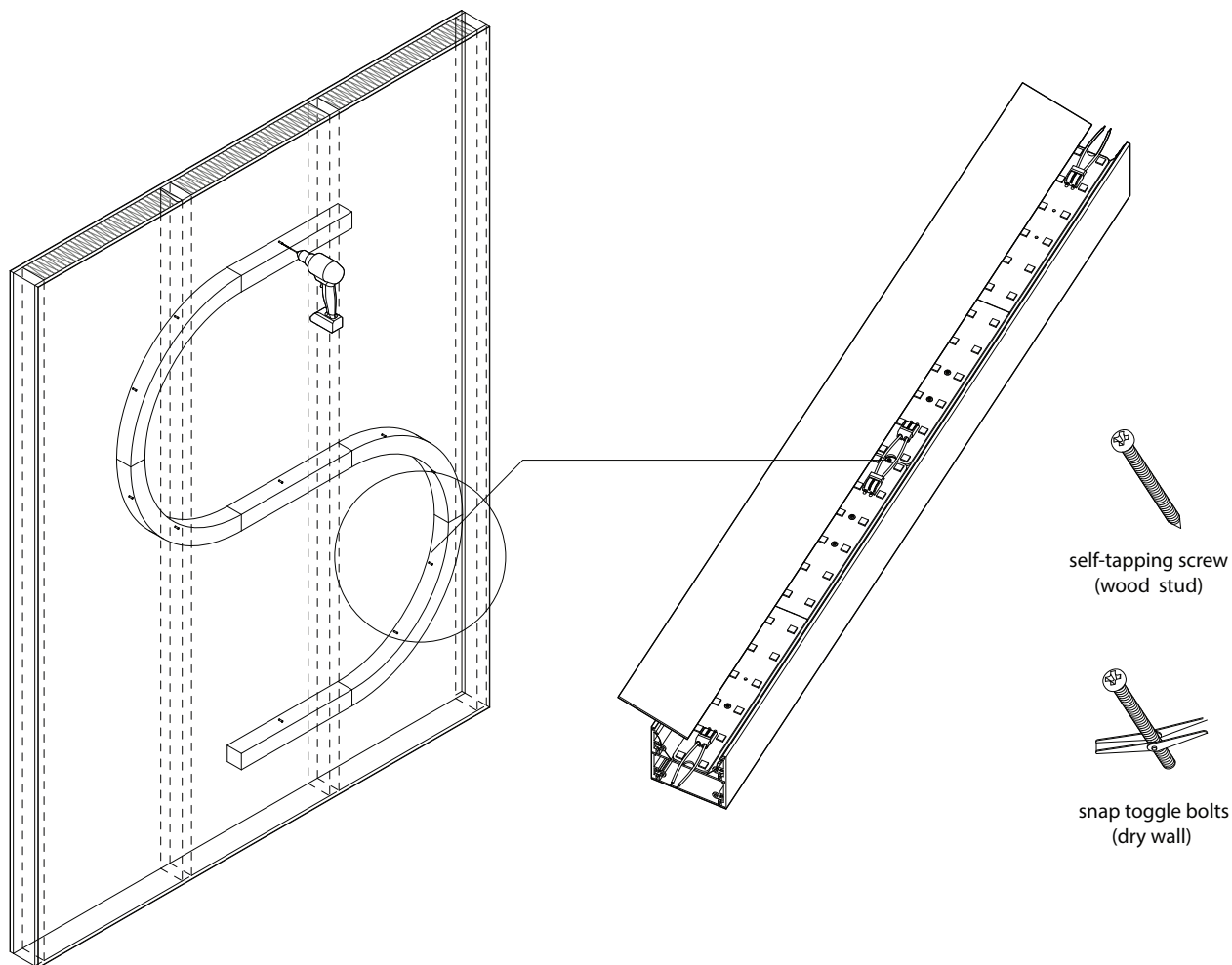
Secure the fixture directly to the ceiling/wall using the pre-drilled holes in both the LED board and the outer shell.



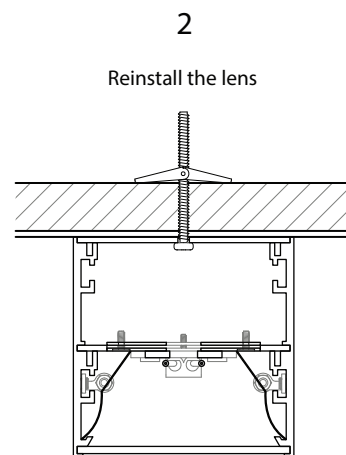
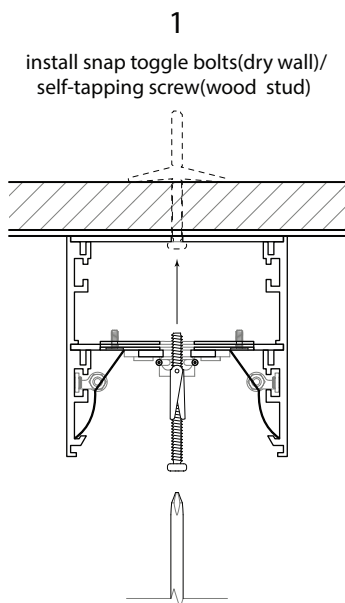
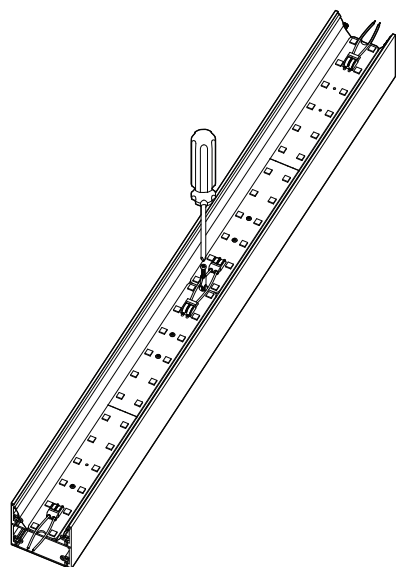
Option B: Removable Holder Plate

If needed, detach the removable panel from the outer shell to facilitate installation, then reattach it once mounting is complete.

Example



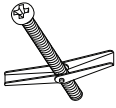
Remove the lens and screw the profile directly to the surface (ceiling or wall) through the mounting holes located inside the profile



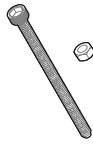
SCREW OPTIONS



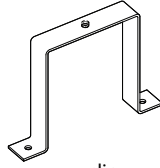
dry-wall screw



anchor bolt



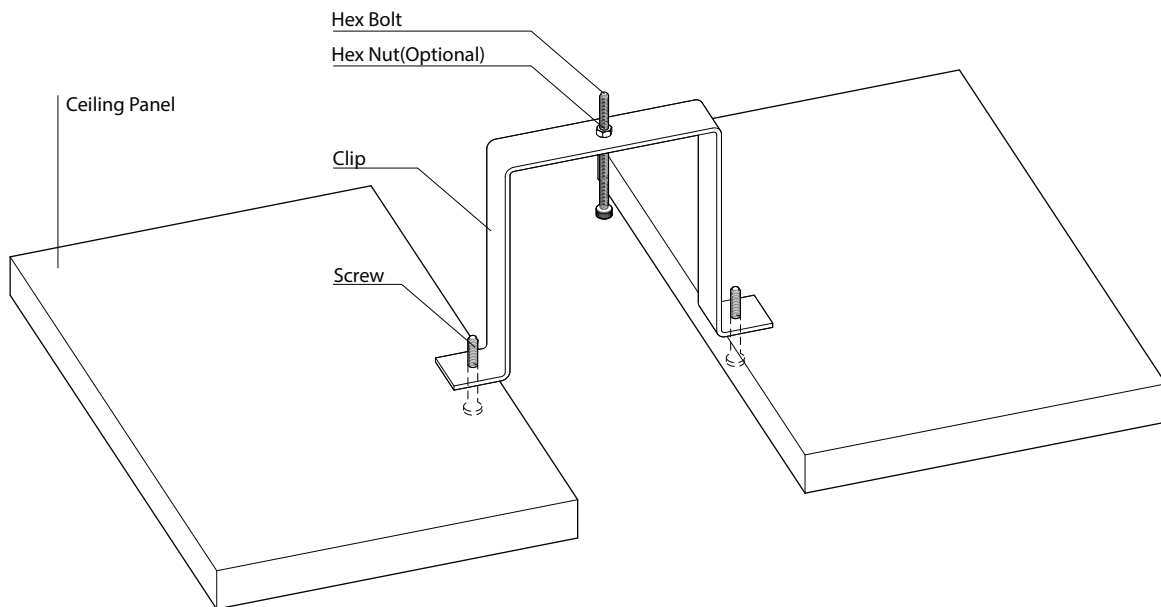
hex bolt



clip

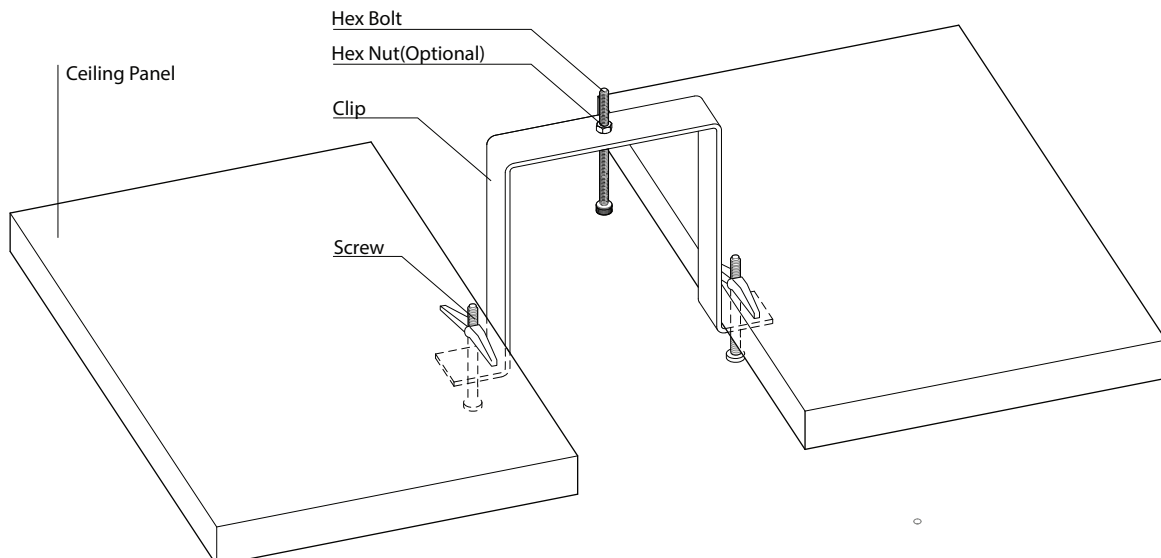
CLIP-LEG ABOVE CEILING PANEL

Recommend for renovated ceiling/ceiling to-be-built, easy to apply finish



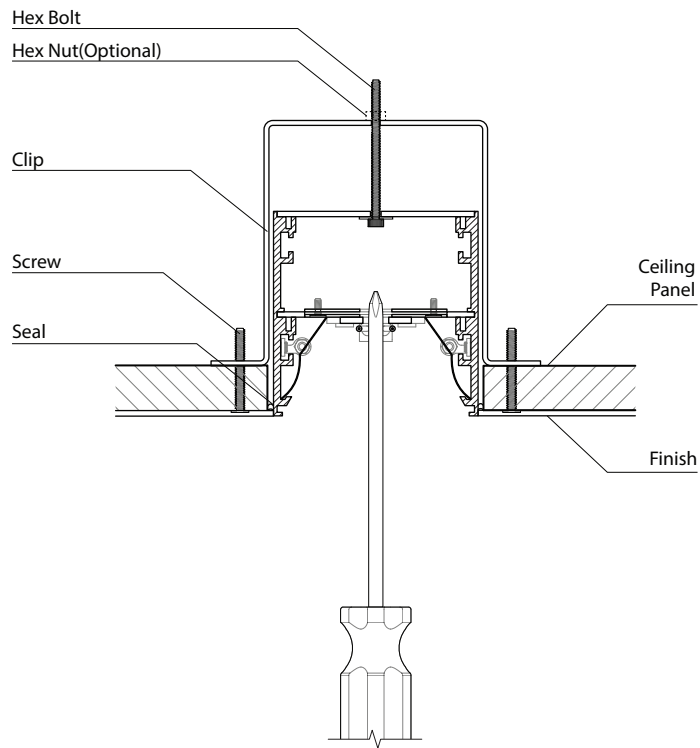
CLIP-LEG UNDER CEILING PANEL

Recommend for prebuilt ceiling, higher requirements to apply finish



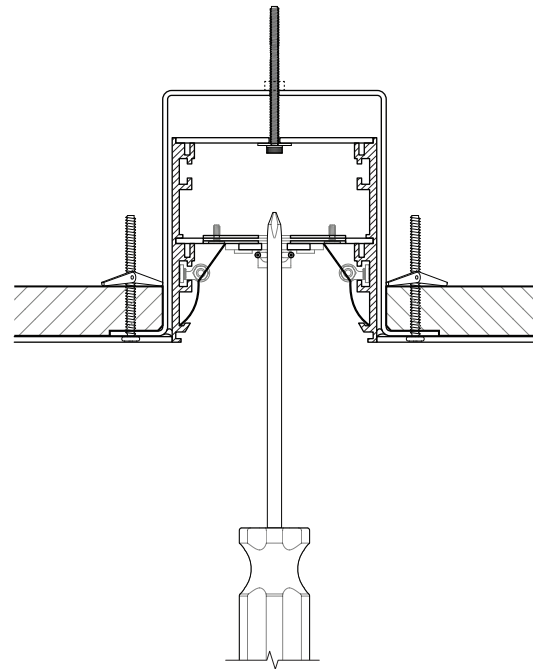
RECESSED

Notice: Due to its flange-less body design, after installation, the SOUL fixture sides should be mudded or finished with joint compound that matches the surrounding surface to fill any small gaps and ensure a seamless appearance.



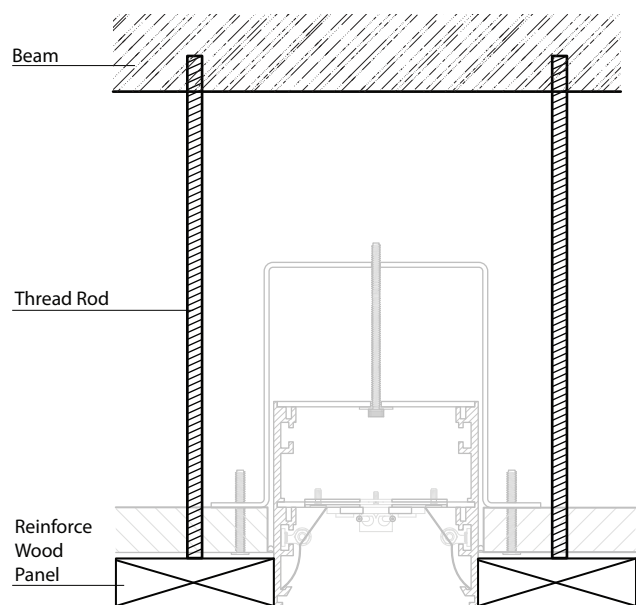
CLIP-LEG ABOVE CEILING PANEL

Recommend for renovated ceiling/ceiling to-be-built, easy to apply finish



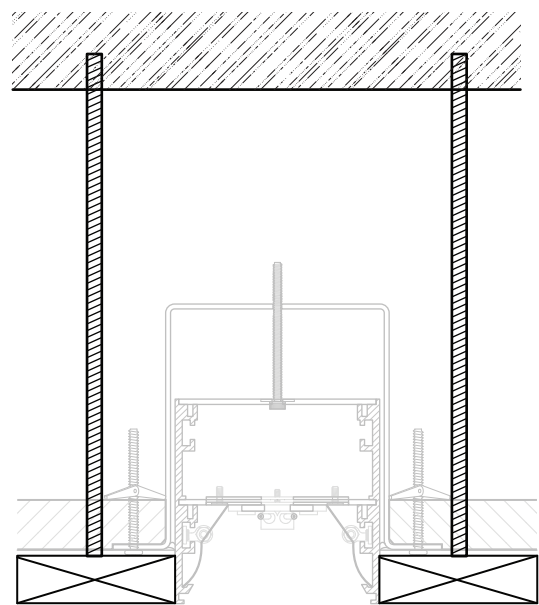
CLIP-LEG UNDER CEILING PANEL

Recommend for prebuilt ceiling, higher requirements to apply finish



REINFORCED WOOD PANEL

If needed, detach the removable panel from the outer shell to facilitate installation, then reattach it once mounting is complete.



For the suspended mount version of SOUL, aircraft cable mounting points are available at intervals of 2, 4, 6, 8, and 11 feet, centered along the length of the fixture. Adjustable cable mounts can be aligned with these predefined points, as specified in the custom installation instructions, and allow for lateral adjustment across the fixture's width to ensure proper balance.

