

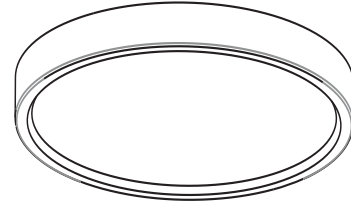
INSTALLATION INSTRUCTIONS

SAFETY PRECAUTIONS

For safety, read and understand instructions completely before starting installation. Electricity should be turned off at the fuse or the circuit breaker box before installing the fixture. All electrical connections must be in accordance with N. E. C. or your local code.

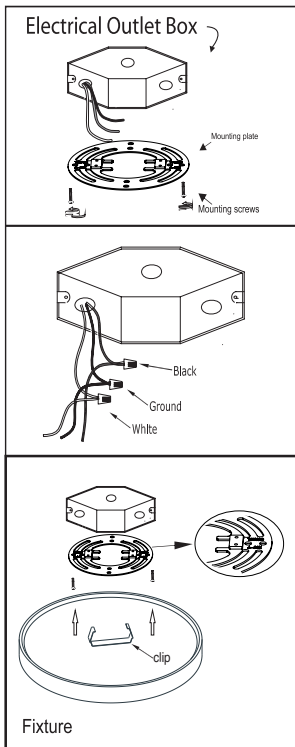
ASSEMBLY INSTRUCTIONS

1. Preparing for installation
Disconnect electrical power before installing or servicing any part of this fixture.
2. This product SHALL be surface mounted with junction box or non-combustible surface above 4 feet (1.2 meter) high. User should prepare necessary accessories and spare parts (not provided) including junction box and screws.



CONSULT A QUALIFIED ELECTRICIAN BEFORE INSTALLING

Option #1: FLUSH MOUNT



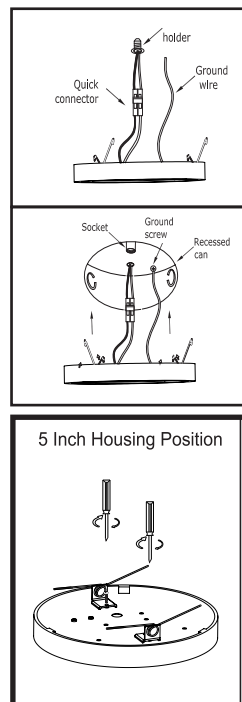
1. Prior to installation, install mounting plate into the electrical outlet box with mounting screws. Drive screws completely to the end of the junction box.
2. Connect supply wires to wires on fixture with wire nuts or push wires into Quick Connector. Connect white to white, black to black, and copper wire to copper wire as grounding connection.
3. Completing the installation by pushing the fixture into the mounting plate

THIS LED light is suitable to be dimmed by LUTRON # CTCL- 153P ,PVCL-153P

PACKAGE CONTENTS

PART	DESCRIPTION	QTY	NOTE
A	LED Low Profile Flushmount	1	
B	Mounting screws	2	
C	Wire nut	3	
D	Mounting plate	1	
E	Springs	2	Optional
F	E26 lamp holder	1	Optional

Option #2: RETROFIT A RECESSED CAN



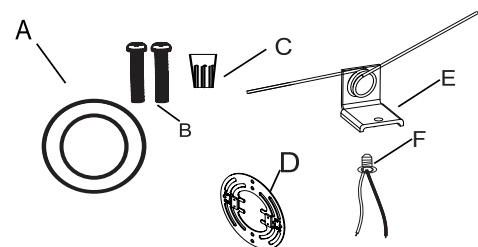
Insert wires into Quick connector. Black to black and white to white. Attach ground wire to ground screw in recessed can.

Turn E26 lamp holder into socket base.

Connect Quick Connectors
Tuck all wires into recessed can. Squeeze springs and push up into recessed can.

5 Inch Housing Position

6 Inch Housing Position



CAUTION: RISK OF ELECTRIC SHOCK
DISCONNECT POWER BEFORE CONNECTING THE FIXTURE.
FAIL TO DO SO MAY PERMANENTLY DAMAGE THE LEDS.

WARNING:
DO NOT REMOVE OR ATTEMPT TO REMOVE LEDS.